



PRICED AT
\$598,140

 **1694 Sq Ft**

 **2 Beds**

 **2.5 Baths**

 **1 Car Garage**

 **3.0 Story**

Spring into a New Home with The Providence Group! Step into luxury with this thoughtfully designed townhome that perfectly blends modern elegance with everyday functionality. Featuring 2 spacious bedrooms, 2.5 baths, and high-end finishes throughout, this home is tailored for comfortable, stylish living. From the moment you arrive, the private front entry, fenced yard, and covered terrace offer a warm welcome and ideal space for outdoor entertaining. Inside, the entry-level boasts a flexible office/media room with both a front door and sliding glass access, creating a bright, versatile space. Upstairs, the open-concept living area is the heart of the home, showcasing a beautiful kitchen island with Calacatta Ultra Quartz countertops, 42" cabinets with crown molding and soft-close doors. The kitchen is fully outfitted with GE stainless steel appliances, including a gas range, built-in microwave, dishwasher, and range hood. Enjoy abundant natural light and seamless indoor-outdoor flow with a private wooden deck perfect for relaxing or entertaining. On the upper level, you'll find a luxurious owner's suite, a comfortable secondary bedroom, two full bathrooms, and a convenient laundry closet with a stackable washer/dryer. Location is everything - and this home has it all! Just steps from premier shopping at Avalon, dining ...

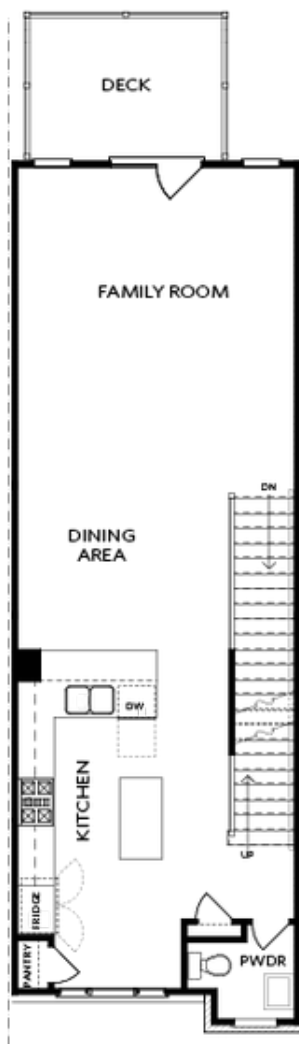
**Want to Know More
About This Home?**

CONTACT OUR COMMUNITY SALES MANAGER
Call Us @ 678.472.0411



Want to Know More
About This Home?

CONTACT OUR COMMUNITY SALES MANAGER
Call Us @ 678.472.0411

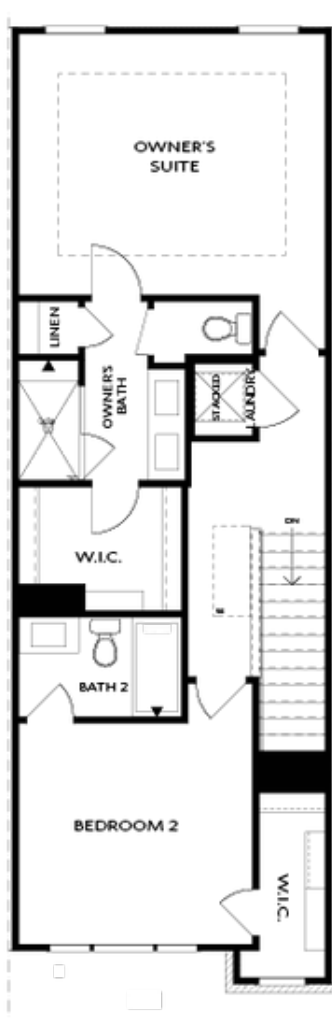


SECOND FLOOR

Elevation N

Want to Know More
About This Home?

CONTACT OUR COMMUNITY SALES MANAGER
Call Us @ 678.472.0411



THIRD FLOOR

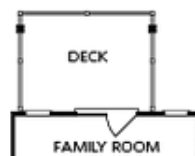
Elevation N

Want to Know More
About This Home?

CONTACT OUR COMMUNITY SALES MANAGER
Call Us @ 678.472.0411



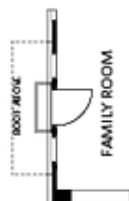
OPT Wet Bar



OPT Covered Deck



OPT Slider Door



OPT End Balcony



OPT Linear Fireplace

OPTIONS

Want to Know More
About This Home?

CONTACT OUR COMMUNITY SALES MANAGER
Call Us @ 678.472.0411