



PRICED AT  
**\$604,790**

 **1694 Sq Ft**

 **2 Beds**

 **2.5 Baths**

 **1 Car Garage**

 **3.0 Story**

**Spring into a New Home with The Providence Group! Discover effortless elegance in this beautifully designed 2-bedroom, 2.5-bath townhome, crafted with a perfect balance of modern sophistication and practical living. From high-end finishes to smart design, this home offers the comfort and versatility you've been looking for. From the start, the private front entrance, fenced-in yard, and covered terrace create a welcoming outdoor space ideal for entertaining or simply enjoying quiet moments. Inside, the entry-level flex room is filled with natural light and offers dual access via a traditional front door and sliding glass door—making it the perfect spot for a home office, media room, or creative studio. Upstairs, the open-concept main level is the heart of the home. The gourmet kitchen is both beautiful and functional, featuring a large island with Calacatta Ultra Quartz countertops, 42" cabinetry with crown molding and soft-close doors, and GE stainless steel appliances, including a gas range, built-in microwave, range hood, and dishwasher. The space flows seamlessly to a private deck, ideal for relaxing or entertaining. On the top level, unwind in the luxurious owner's suite complete with a spa-inspired bath. A spacious secondary bedroom, second full bath, and a convenient laundry closet round ...**

**Want to Know More  
About This Home?**

**CONTACT OUR COMMUNITY SALES MANAGER**  
**Call Us @ 770.846.7164**

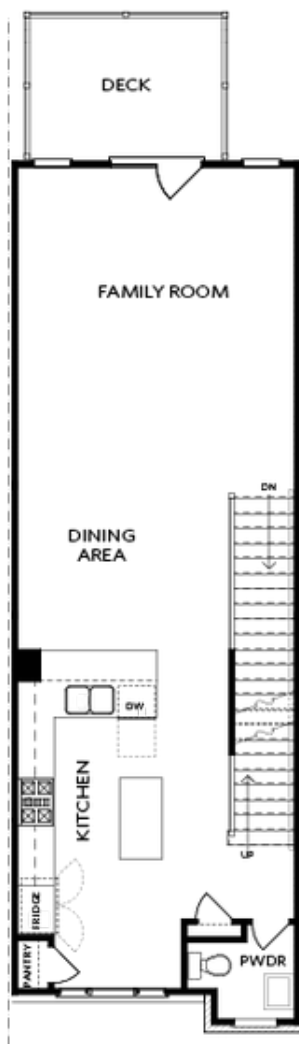


TERRACE

Elevation N

Want to Know More  
About This Home?

CONTACT OUR COMMUNITY SALES MANAGER  
Call Us @ 770.846.7164

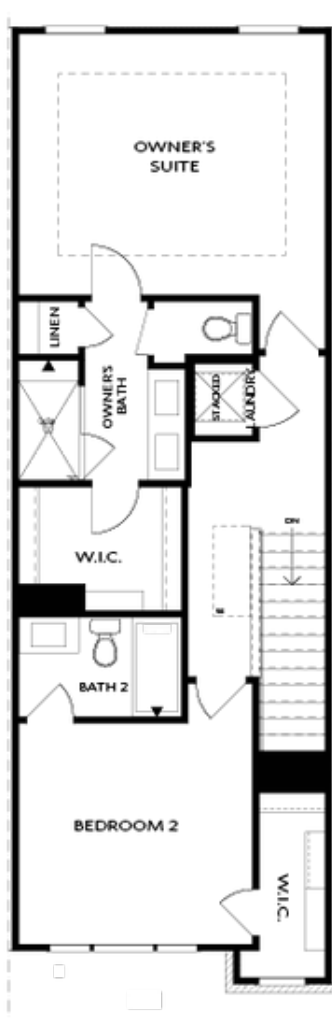


SECOND FLOOR

Elevation N

Want to Know More  
About This Home?

CONTACT OUR COMMUNITY SALES MANAGER  
Call Us @ 770.846.7164



THIRD FLOOR

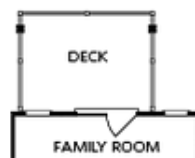
Elevation N

Want to Know More  
About This Home?

CONTACT OUR COMMUNITY SALES MANAGER  
Call Us @ 770.846.7164



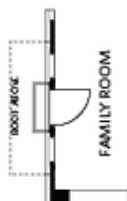
OPT Wet Bar



OPT Covered Deck



OPT Slider Door



OPT End Balcony



OPT Linear Fireplace

## OPTIONS

Want to Know More  
About This Home?

CONTACT OUR COMMUNITY SALES MANAGER  
Call Us @ 770.846.7164