

PRICED AT  
**\$604,790**

 1694 Sq Ft

 2 Beds

 2.5 Baths

 1 Car Garage

 3.0 Story

Spring into a New Home with The Providence Group! Discover effortless elegance in this beautifully designed 2-bedroom, 2.5-bath townhome, crafted with a perfect balance of modern sophistication and practical living. From high-end finishes to smart design, this home offers the comfort and versatility you've been looking for. From the start, the private front entrance, fenced-in yard, and covered terrace create a welcoming outdoor space ideal for entertaining or simply enjoying quiet moments. Inside, the entry-level flex room is filled with natural light and offers dual access via a traditional front door and sliding glass door—making it the perfect spot for a home office, media room, or creative studio. Upstairs, the open-concept main level is the heart of the home. The gourmet kitchen is both beautiful and functional, featuring a large island & breakfast bar with Calacatta Ultra Quartz countertops, 42" cabinetry with crown molding and soft-close doors, and GE stainless steel appliances, including a gas range, built-in microwave, range hood, and dishwasher. The space flows seamlessly to a private deck, ideal for relaxing or entertaining. On the top level, unwind in the luxurious owner's suite complete with a spa-inspired bath. A spacious secondary bedroom, second full bath, and a convenient ...

**Want to Know More  
About This Home?**

CONTACT OUR COMMUNITY SALES MANAGER  
Call Us @ 770.846.7164

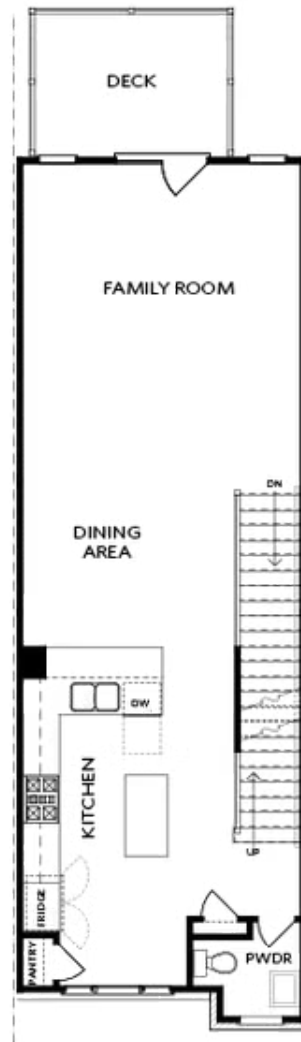


TERRACE

Elevation N

Want to Know More  
About This Home?

CONTACT OUR COMMUNITY SALES MANAGER  
Call Us @ 770.846.7164

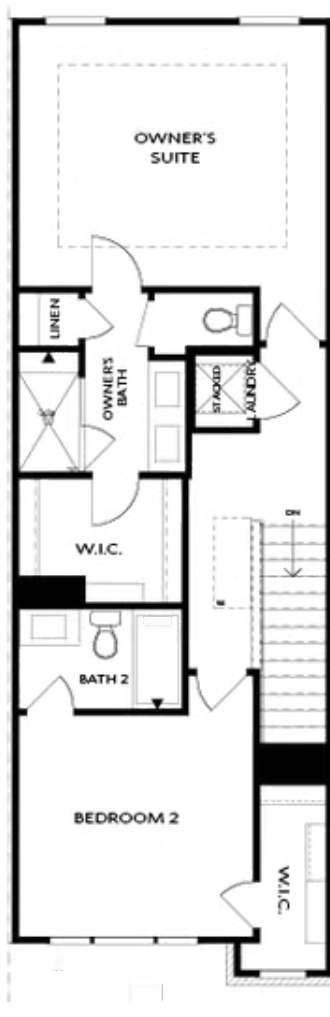


SECOND FLOOR

Elevation N

Want to Know More  
About This Home?

CONTACT OUR COMMUNITY SALES MANAGER  
Call Us @ 770.846.7164



THIRD FLOOR

Elevation N

Want to Know More  
About This Home?

CONTACT OUR COMMUNITY SALES MANAGER  
Call Us @ 770.846.7164



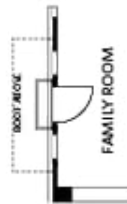
OPT Wet Bar



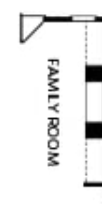
OPT Covered Deck



OPT Slider Door



OPT End Balcony



OPT Linear Fireplace

OPTIONS

Want to Know More  
 About This Home?

CONTACT OUR COMMUNITY SALES MANAGER  
 Call Us @ 770.846.7164