

PRICED AT
\$798,250

 2400 Sq Ft

 4 Beds

 3.5 Baths

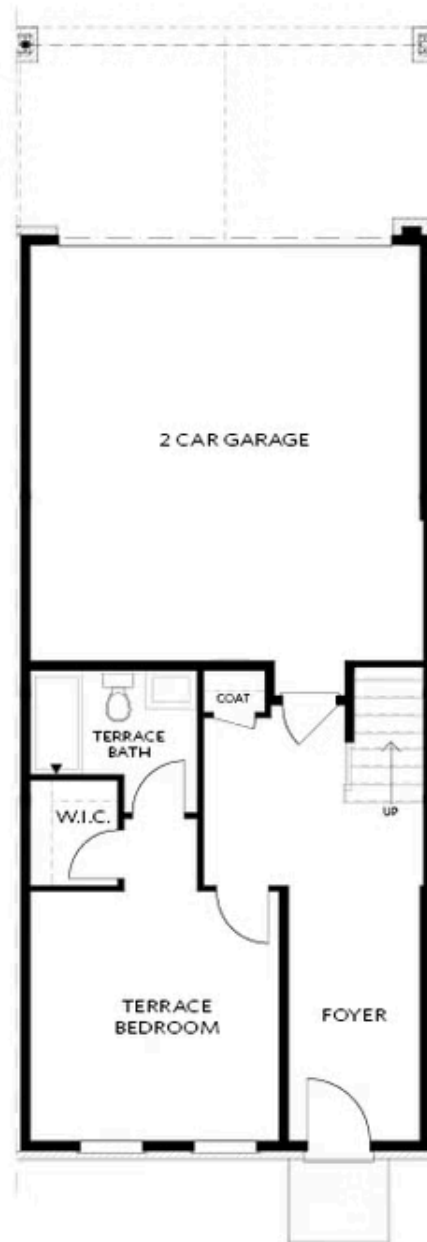
 2 Car Garage

 3.0 Story

"New Year, New Home" - Enjoy \$ 30,000 Promotion on contracts written by end of January. Promotion can be applied towards a price reduction, closing costs, rate buydown and more giving you the flexibility to save where it matters most. Ends January 31, 2026. The Benton III by The Providence Group. END UNIT! Available for move-in Spring 2026. - Timeless style and modern comfort in this beautifully designed 4 bedroom, 3.5-bath townhome. Perfectly blending high-end finishes with practical functionality, this residence offers everything you need for refined, everyday living. From the moment you arrive, you'll be greeted by a private front entry, a fenced-in Front Yard. On the entry level, a full bedroom with a full bath with Walk in Shower, an excellent space for your guests or in-laws. Going upstairs the open-concept family room and Kitchen features an electric linear fireplace and dining area flowing effortlessly into a designer kitchen featuring Quartz countertops, 42" Cabinetry with elegant crown molding, and soft-close doors. GE stainless steel appliances, makes cooking and entertaining a delight. A convenient laundry room is thoughtfully placed for easy access, along with a Tankless Water Heater. The natural light is abundant with many side windows and a ...

Want to Know More
About This Home?

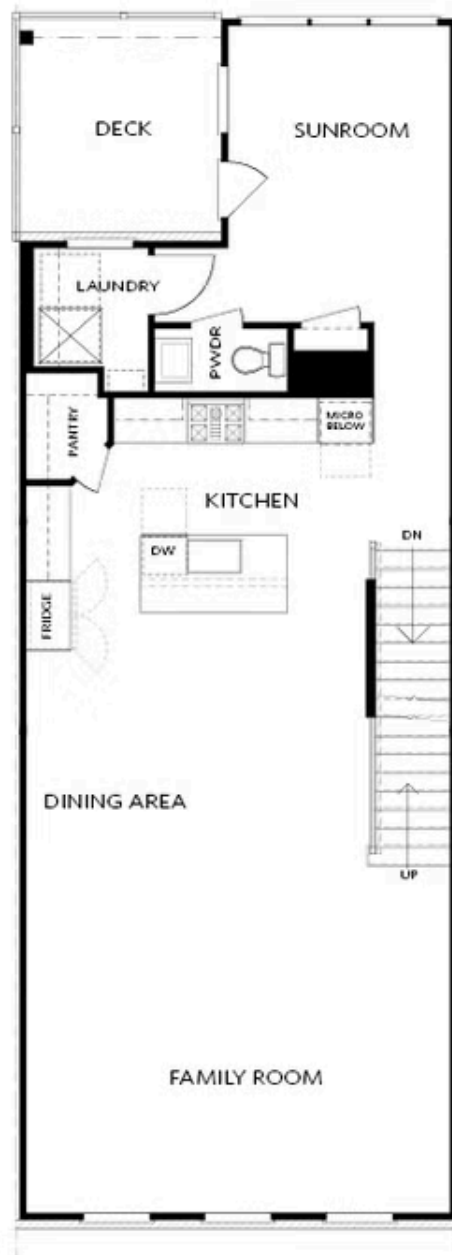
CONTACT OUR COMMUNITY SALES MANAGER
Call Us @ 770.846.7164



Elevation 03

Want to Know More
About This Home?

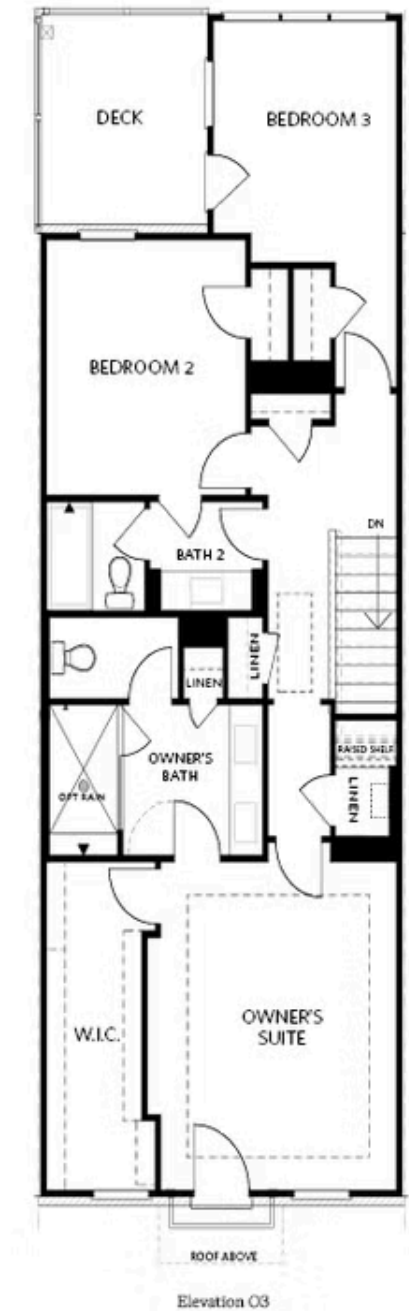
CONTACT OUR COMMUNITY SALES MANAGER
Call Us @ 770.846.7164



Elevation 03

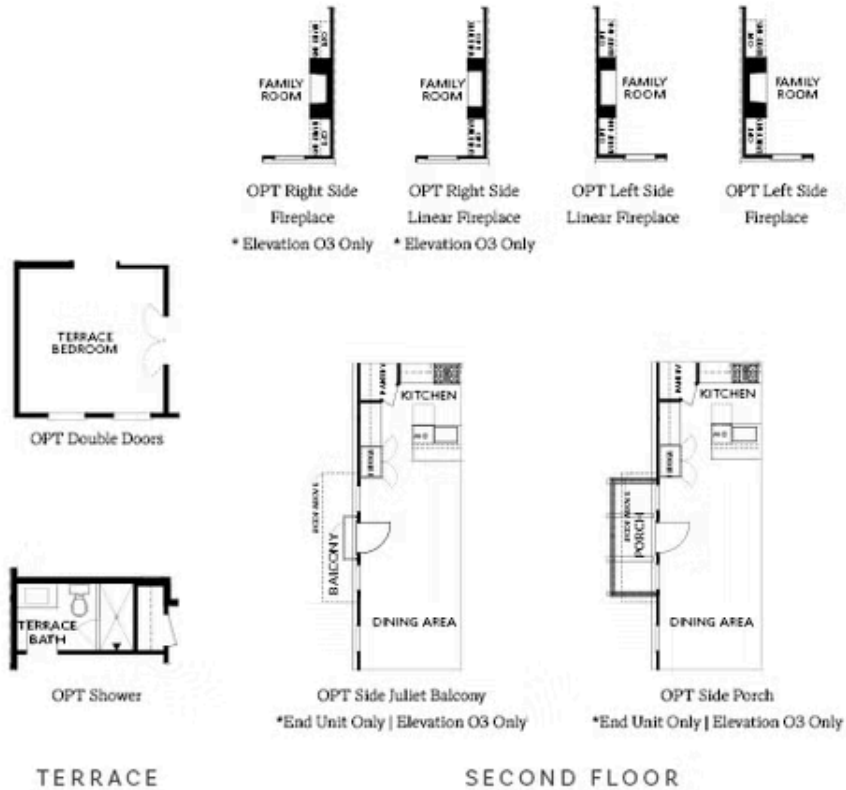
Want to Know More
About This Home?

CONTACT OUR COMMUNITY SALES MANAGER
Call Us @ 770.846.7164



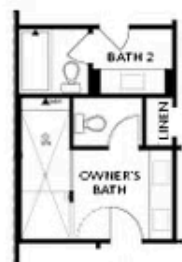
Want to Know More
About This Home?

CONTACT OUR COMMUNITY SALES MANAGER
Call Us @ 770.846.7164



Want to Know More
About This Home?

CONTACT OUR COMMUNITY SALES MANAGER
Call Us @ 770.846.7164



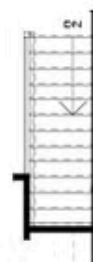
OPT Walk-Through Shower



OPT Freestanding Tub/Shower



OPT Decked Tub/Shower



OPT Open Rail

THIRD FLOOR

Want to Know More
About This Home?

CONTACT OUR COMMUNITY SALES MANAGER
Call Us @ 770.846.7164