

PRICED AT
\$614,630

 1694 Sq Ft

 2 Beds

 2.5 Baths

 1 Car Garage

 3.0 Story

Elevate your Savings – Enjoy \$30,000 promotion! Promotion can be applied towards a price reduction, closing costs, rate buydown and more, giving you the flexibility to save where it matters most. – The Barnesley I by The Providence Group! Quick Move-In! Discover luxury living in this beautifully crafted townhome that seamlessly combines modern elegance with everyday comfort. This home is designed for effortless, stylish living. From the moment you arrive, the private front entry, fenced yard, and covered terrace create a warm and welcoming first impression. Inside, the entry-level flex space serves perfectly as a home office or media room. Upstairs, the heart of the home awaits in the open-concept living area a stunning kitchen featuring a large island with Calacatta Ultra Quartz countertops, 42” Light Gray cabinets with crown molding and soft-close doors, and premium GE stainless steel appliances. Step out onto your private wooden deck and enjoy seamless indoor-outdoor living. The top floor hosts a luxurious owner’s suite, a second spacious bedroom with a full bath, and a convenient laundry closet. Ivey Brooke is just a short drive away to Avalon, Downtown Alpharetta, Top Golf, The Atlanta National Pickleball Club and more. Additional highlights include a one-car garage ...

**Want to Know More
About This Home?**

CONTACT OUR COMMUNITY SALES MANAGER
Call Us @ 770.846.7164

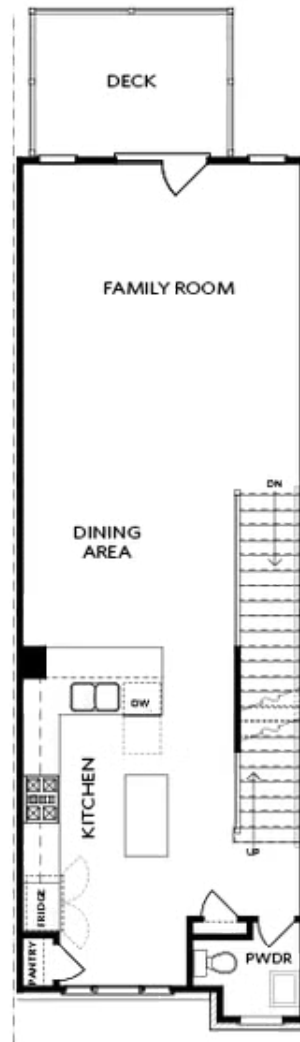


TERRACE

Elevation N

Want to Know More
About This Home?

CONTACT OUR COMMUNITY SALES MANAGER
Call Us @ 770.846.7164

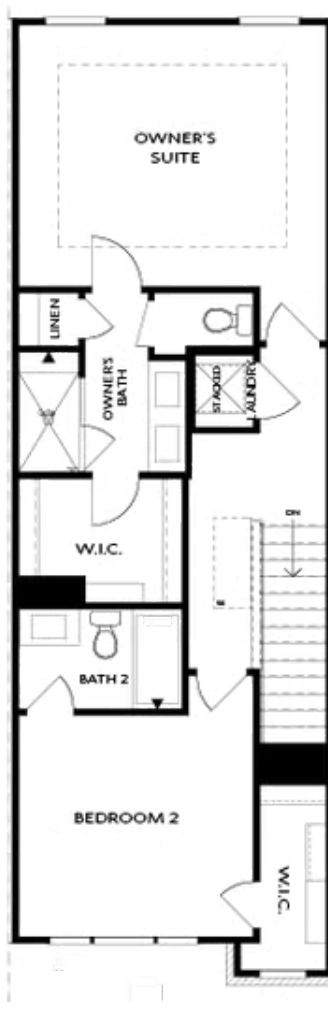


SECOND FLOOR

Elevation N

Want to Know More
About This Home?

CONTACT OUR COMMUNITY SALES MANAGER
Call Us @ 770.846.7164



THIRD FLOOR

Elevation N

Want to Know More
About This Home?

CONTACT OUR COMMUNITY SALES MANAGER
Call Us @ 770.846.7164



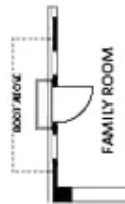
OPT Wet Bar



OPT Covered Deck



OPT Slider Door



OPT End Balcony



OPT Linear Fireplace

OPTIONS

Want to Know More
About This Home?

CONTACT OUR COMMUNITY SALES MANAGER
Call Us @ 770.846.7164