



PRICED AT
\$809,100

 2400 Sq Ft

 4 Beds

 3.5 Baths

 2 Car Garage

 3.0 Story

QUICK MOVE-IN! Elevate your Savings – Enjoy \$30,000 promotion on contracts written this month. Promotion can be applied towards a price reduction, closing costs, rate buydown and more giving you the flexibility to save where it matters most. – The Benton III by The Providence Group! END UNIT! – Discover the perfect blend of modern design and everyday comfort in this beautifully appointed 4-bedroom, 3.5-bath townhome. Thoughtfully crafted with upscale finishes and flexible living spaces, this home is ideal for today's dynamic lifestyle. You'll be welcomed with a private front entrance and fenced-in yard—a peaceful space to unwind or entertain in style. Step inside to a welcoming foyer, leading to a spacious guest bedroom with en-suite bath. Upstairs, the main living area boasts an airy open-concept layout that seamlessly connects the living, dining, and kitchen spaces. At the heart of it all is a chef-inspired kitchen featuring a generous island with Quartz countertops, 42" shaker-style cabinets with crown molding and soft-close doors, and GE stainless steel appliances. Just off the living space, a sunroom with access to a private wooden deck offers the perfect setting for morning coffee or evening cocktails. The upper level is home to a tranquil owner's ...

Want to Know More
About This Home?

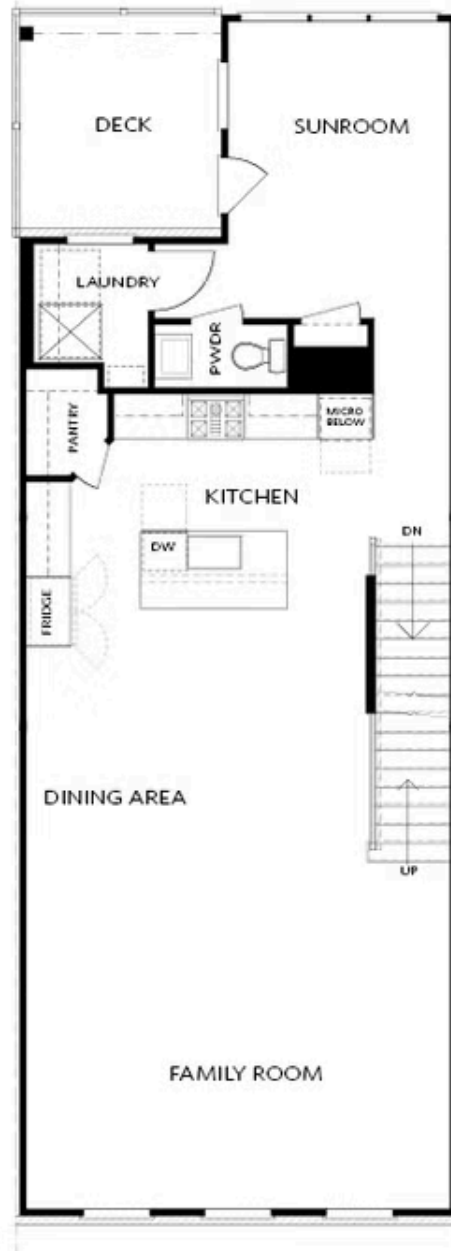
CONTACT OUR COMMUNITY SALES MANAGER
Call Us @ 770.846.7164



Elevation 03

Want to Know More
About This Home?

CONTACT OUR COMMUNITY SALES MANAGER
Call Us @ 770.846.7164



Elevation 03

Want to Know More
About This Home?

CONTACT OUR COMMUNITY SALES MANAGER
Call Us @ 770.846.7164



Want to Know More
About This Home?

CONTACT OUR COMMUNITY SALES MANAGER
Call Us @ 770.846.7164



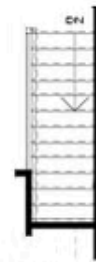
OPT Walk-Through Shower



OPT Freestanding Tub/Shower



OPT Decked Tub/Shower



OPT Open Rail

THIRD FLOOR

Want to Know More
About This Home?

CONTACT OUR COMMUNITY SALES MANAGER
Call Us @ 770.846.7164