



PRICED AT
\$772,800

 2400 Sq Ft

 4 Beds

 3.5 Baths

 2 Car Garage

 3.0 Story

Elevate your Savings - Enjoy \$5,000 towards closing costs with TPG Preferred Lender. - The Benton III by The Providence Group! - Discover the perfect blend of modern design and everyday comfort in this beautifully appointed 4-bedroom, 3.5-bath townhome. Thoughtfully crafted with upscale finishes and flexible living spaces, this home is ideal for today's dynamic lifestyle. You'll be welcomed with a private front entrance and fenced-in yard—a peaceful space to unwind or entertain in style. Step inside to a welcoming foyer, leading to a spacious guest bedroom with en-suite bath. Upstairs, the main living area boasts an airy open-concept layout that seamlessly connects the living, dining, and kitchen spaces. At the heart of it all is a chef-inspired kitchen featuring a generous island with Quartz countertops, 42" shaker-style cabinets with crown molding and soft-close doors, and GE stainless steel appliances. Just off the living space, a sunroom with access to a private wooden deck offers the perfect setting for morning coffee or evening cocktails. The upper level is home to a tranquil owner's suite with a spa-like bath, featuring a large walk-in shower and walk-in closet, along with two additional bedrooms, each with access to their own shared outdoor deck, ...

**Want to Know More
About This Home?**

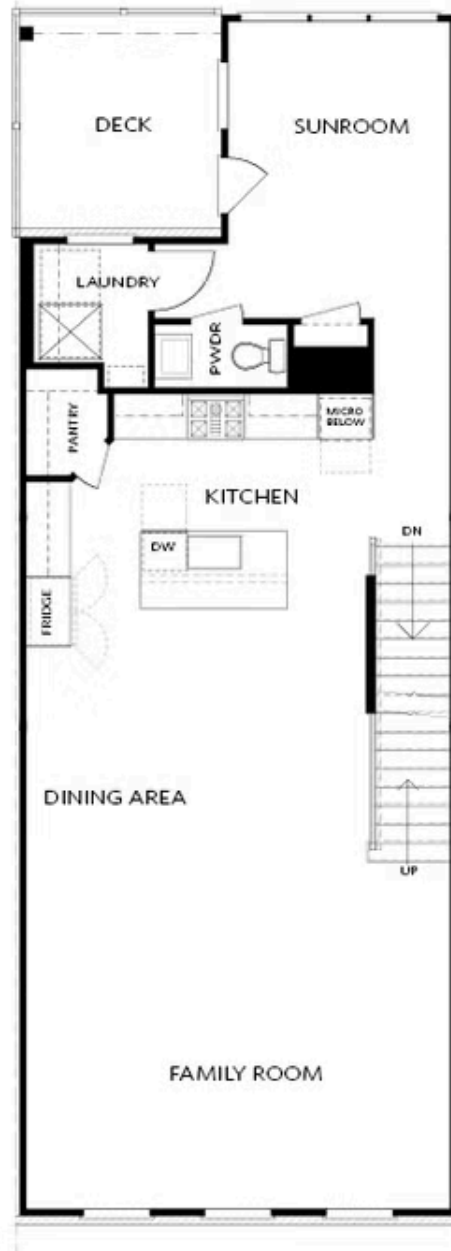
CONTACT OUR COMMUNITY SALES MANAGER
Call Us @ 770.846.7164



Elevation 03

Want to Know More
About This Home?

CONTACT OUR COMMUNITY SALES MANAGER
Call Us @ 770.846.7164



Elevation O3

Want to Know More
About This Home?

CONTACT OUR COMMUNITY SALES MANAGER
Call Us @ 770.846.7164



Want to Know More
About This Home?

CONTACT OUR COMMUNITY SALES MANAGER
Call Us @ 770.846.7164



OPT Right Side
 Fireplace

* Elevation O3 Only

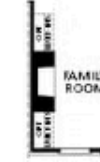


OPT Right Side
 Linear Fireplace

* Elevation O3 Only



OPT Left Side
 Linear Fireplace



OPT Left Side
 Fireplace

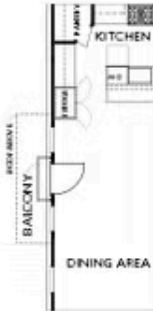


OPT Double Doors



OPT Shower

TERRACE



OPT Side Juliet Balcony

*End Unit Only | Elevation O3 Only



OPT Side Porch

*End Unit Only | Elevation O3 Only

SECOND FLOOR

Want to Know More
 About This Home?

CONTACT OUR COMMUNITY SALES MANAGER
 Call Us @ 770.846.7164



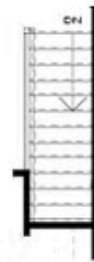
OPT Walk-Through Shower



OPT Freestanding Tub/Shower



OPT Decked Tub/Shower



OPT Open Rail

THIRD FLOOR

Want to Know More
About This Home?

CONTACT OUR COMMUNITY SALES MANAGER
Call Us @ 770.846.7164