






PRICED AT  
**\$601,900**

-  1694 Sq Ft
-  2 Beds
-  2.5 Baths
-  1 Car Garage
-  3.0 Story

New Year, New Home –\$5K CC assistance with our preferred lenders. The Barnesley by The Providence Group! Timeless style and modern comfort in this beautifully designed 2-bedroom, 2.5-bath townhome. Perfectly blending high-end finishes with practical functionality, this residence offers everything you need for refined, everyday living. From the moment you arrive, you'll be greeted by a private front entry, a fenced-in yard, and a covered terrace—a perfect outdoor retreat for morning coffee or evening entertaining. On the entry level, a flexible bonus room provides the ideal setup for a home office, gym, or media room, with natural light pouring in through large windows and dual access points. Upstairs, the main level is a true showstopper. The dining area flowing effortlessly into a designer kitchen featuring the Award Winning Design Collection Warm Linen with Gold Package upgrade. Quartz countertops, 42" Cabinetry with elegant crown molding, and soft-close doors. GE stainless steel appliances, make cooking and entertaining a delight. Step out onto your private wooden deck for seamless indoor-outdoor living year-round. The top floor features a serene owner's suite complete with a spa-like bath, plus a spacious secondary bedroom with its own full bath. A convenient laundry closet is thoughtfully placed ...

**Want to Know More  
About This Home?**

CONTACT OUR COMMUNITY SALES MANAGER  
Call Us @ 770.846.7164

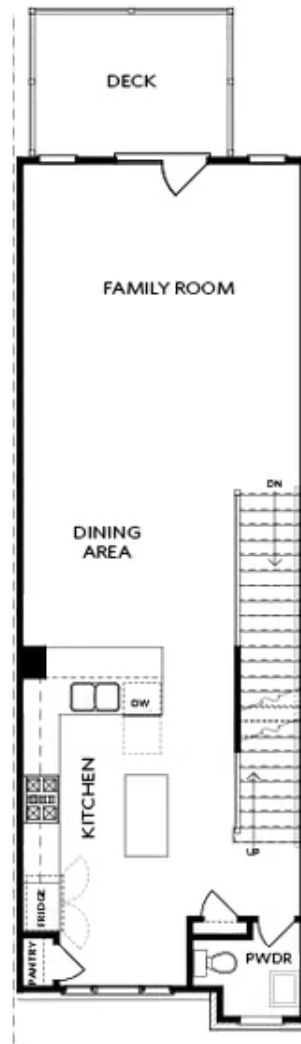


TERRACE

Elevation N

Want to Know More  
About This Home?

CONTACT OUR COMMUNITY SALES MANAGER  
Call Us @ 770.846.7164

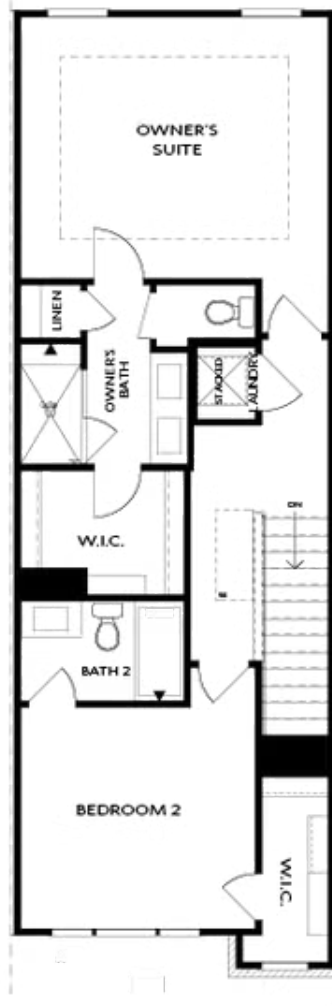


SECOND FLOOR

Elevation N

Want to Know More  
About This Home?

CONTACT OUR COMMUNITY SALES MANAGER  
Call Us @ 770.846.7164



THIRD FLOOR

Elevation N

Want to Know More  
About This Home?

CONTACT OUR COMMUNITY SALES MANAGER  
Call Us @ 770.846.7164



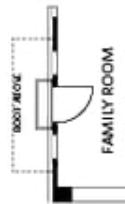
OPT Wet Bar



OPT Covered Deck



OPT Slider Door



OPT End Balcony



OPT Linear Fireplace

## OPTIONS

Want to Know More  
About This Home?

CONTACT OUR COMMUNITY SALES MANAGER  
Call Us @ 770.846.7164