






PRICED AT
\$615,140

-  1694 Sq Ft
-  2 Beds
-  2.5 Baths
-  1 Car Garage
-  3.0 Story

Elevate your Savings with \$5K CC assistance with preferred lenders. The Barnesley by The Providence Group! Timeless style and modern comfort in this beautifully designed 2-bedroom, 2.5-bath townhome. Perfectly blending high-end finishes with practical functionality, this residence offers everything you need for refined, everyday living. From the moment you arrive, you'll be greeted by a private front entry, a fenced-in yard, and a covered terrace—a perfect outdoor retreat for morning coffee or evening entertaining. On the entry level, a flexible bonus room provides the ideal setup for a home office, gym, or media room, with natural light pouring in through large windows and dual access points. Upstairs, the main level is a true showstopper. The dining area flowing effortlessly into a designer kitchen. Quartz countertops, 42" Cabinetry with elegant crown molding, and soft-close doors. GE stainless steel appliances make cooking and entertaining a delight. Step out onto your private wooden deck for seamless indoor-outdoor living year-round. The top floor features a serene owner's suite complete with a spa-like bath, plus a spacious secondary bedroom with its own full bath. A convenient laundry closet is thoughtfully placed for easy access. Ideally located in the IveyBrooke community, you're just minutes from Avalon, ...

**Want to Know More
About This Home?**

CONTACT OUR COMMUNITY SALES MANAGER
Call Us @ 770.846.7164

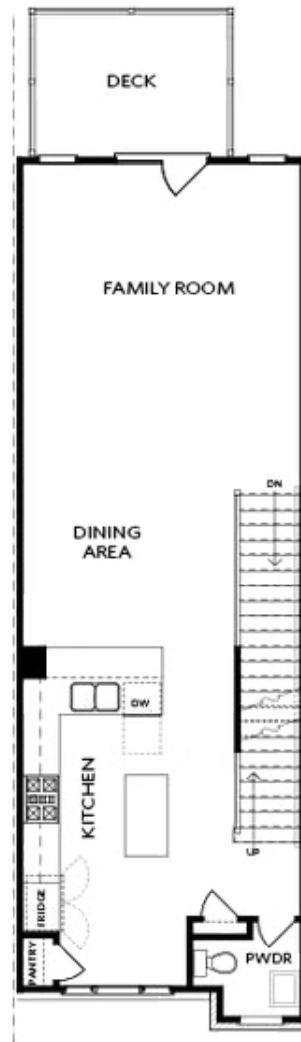


TERRACE

Elevation N

Want to Know More
About This Home?

CONTACT OUR COMMUNITY SALES MANAGER
Call Us @ 770.846.7164

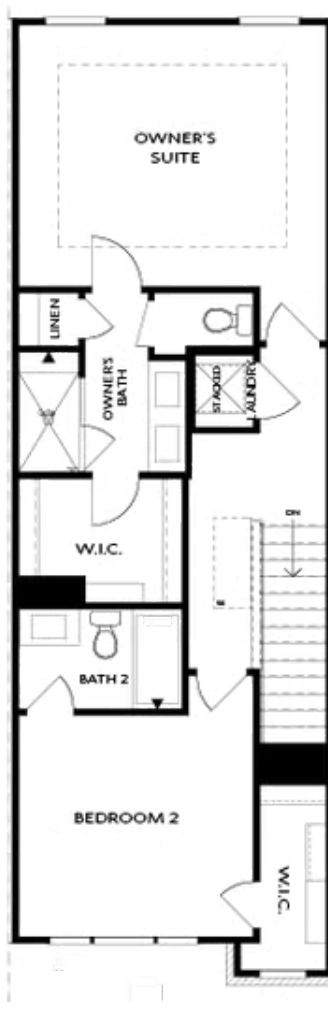


SECOND FLOOR

Elevation N

Want to Know More
About This Home?

CONTACT OUR COMMUNITY SALES MANAGER
Call Us @ 770.846.7164



THIRD FLOOR

Elevation N

Want to Know More
About This Home?

CONTACT OUR COMMUNITY SALES MANAGER
Call Us @ 770.846.7164



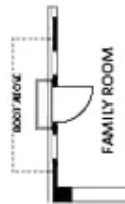
OPT Wet Bar



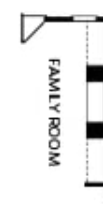
OPT Covered Deck



OPT Slider Door



OPT End Balcony



OPT Linear Fireplace

OPTIONS

Want to Know More
About This Home?

CONTACT OUR COMMUNITY SALES MANAGER
Call Us @ 770.846.7164