



PRICED FROM  
**\$585,900**

 **1,694 Sq Ft**

 **2 Beds**

 **2.5 Baths**

 **1 Car Garage**

 **3.0 Story**

- **Gourmet Kitchen with Island**
- **Owner's Suite and Private Bath with Dual Vanities and Large Walk-In Closet**
- **Office on Terrace Level**
- **Covered Porch**
- **One Car Garage**

[Read More Online](#)

## Available Elevations



**Benton I and Barnesley I -  
Elevation**

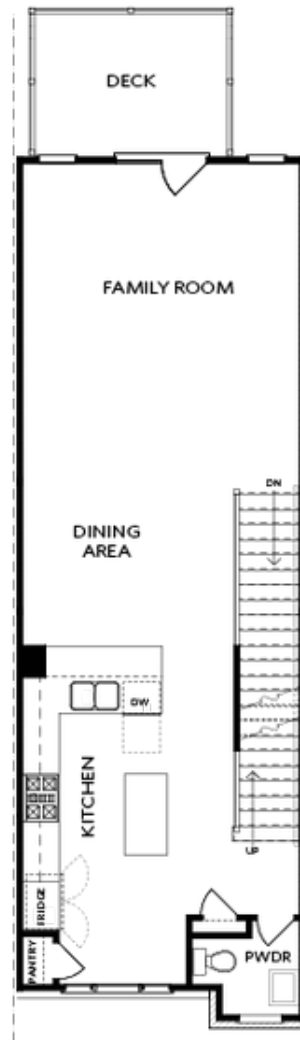


TERRACE

Elevation N

Want to Know More  
About This Home?

CONTACT OUR COMMUNITY SALES MANAGER  
Call Us @ 770.846.7164

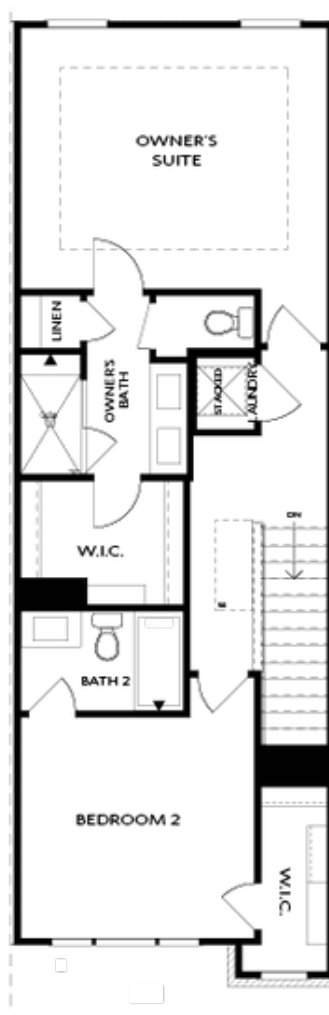


SECOND FLOOR

Elevation N

Want to Know More  
About This Home?

CONTACT OUR COMMUNITY SALES MANAGER  
Call Us @ 770.846.7164



THIRD FLOOR

Elevation N

Want to Know More  
About This Home?

CONTACT OUR COMMUNITY SALES MANAGER  
Call Us @ 770.846.7164



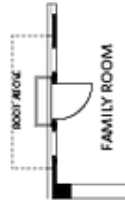
OPT Wet Bar



OPT Covered Deck



OPT Slider Door



OPT End Balcony



OPT Linear Fireplace

## OPTIONS

Want to Know More  
About This Home?

CONTACT OUR COMMUNITY SALES MANAGER  
Call Us @ 770.846.7164