



 **1,955 - 2,201 Sq Ft**

 **2 - 3 Beds**

 **2.5 Baths**

 **2 Car Garage**

 **3.0 Story**

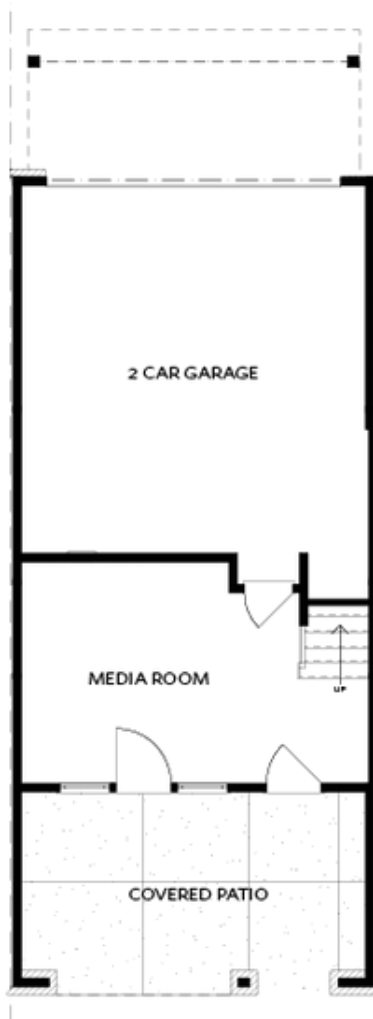
- **Gourmet Kitchen with Island**
- **Owner's Suite and Private Bath with Dual Vanities and Large Walk-In Shower**
- **Media room on Terrace Level**
- **Covered Porch**
- **Two Car Garage**

[Read More Online](#)

Available Elevations

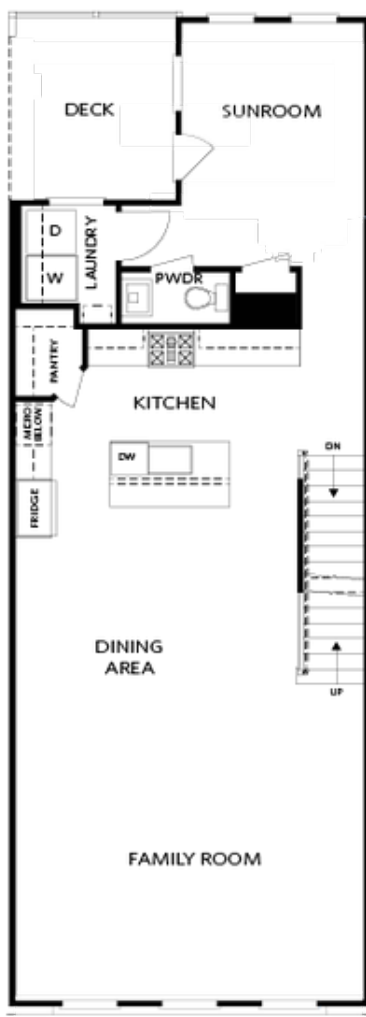


**Benton I and Barnsley I -
Elevation**



Want to Know More
About This Home?

CONTACT OUR COMMUNITY SALES MANAGER
Call Us @ 678.472.0411

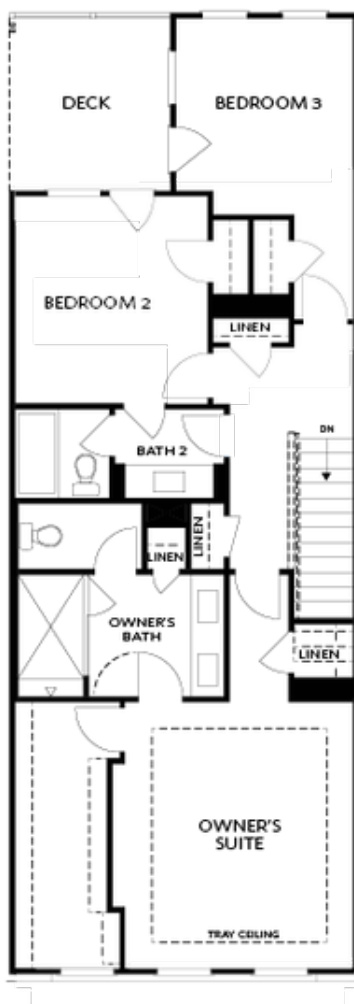


SECOND FLOOR
W. OPT SUNROOM

Elevation N

Want to Know More
About This Home?

CONTACT OUR COMMUNITY SALES MANAGER
Call Us @ 678.472.0411



THIRD FLOOR
W. OPT BEDROOM 3

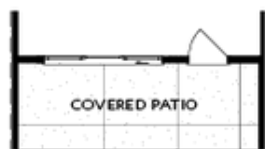
Elevation N

Want to Know More
About This Home?

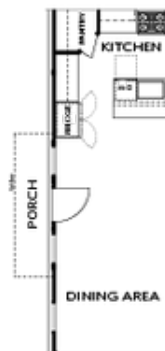
CONTACT OUR COMMUNITY SALES MANAGER
Call Us @ 678.472.0411



OPT Patio Fireplace



OPT Slider Door



OPT Side Porch
(end unit only)



OPT Left Side
Linear Fireplace



OPT Left Side
Fireplace



OPT Right Side
Fireplace



OPT Right Side
Linear Fireplace

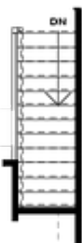
TERRACE

SECOND FLOOR

OPTIONS

Want to Know More
About This Home?

CONTACT OUR COMMUNITY SALES MANAGER
Call Us @ 678.472.0411



OPT Open Rail



OPT Walk-Through Shower



OPT Freestanding
Tub/Shower Combo



OPT Decked Tub/
Shower Combo

THIRD FLOOR

OPTIONS

Want to Know More
About This Home?

CONTACT OUR COMMUNITY SALES MANAGER
Call Us @ 678.472.0411