




PRICED FROM  
**\$1,675,000**

 2,892 - 3,042 Sq Ft

 3 - 4 Beds

 4.5 Baths

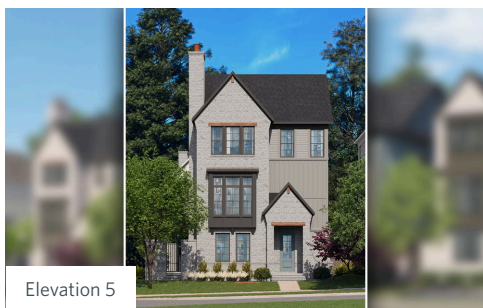
 2 Car Garage

 3.0 Story

- Private Side Patio/Court Yard Enclosure
- Terrace Entry Home
- Recreation and one Powder Room on the Terrace
- Open Main Level Layout where the Kitchen is the center of the home, nestled between the Family Room and the Dining Room
- Gourmet Kitchen with Double Oven and a Large Walk-In Pantry
- Covered Rear Deck off the Kitchen and Dining Room with a Massive Z-Fold Door to Maximize your Indoor/Outdoor Living Space

[Read More Online](#)

## Available Elevations



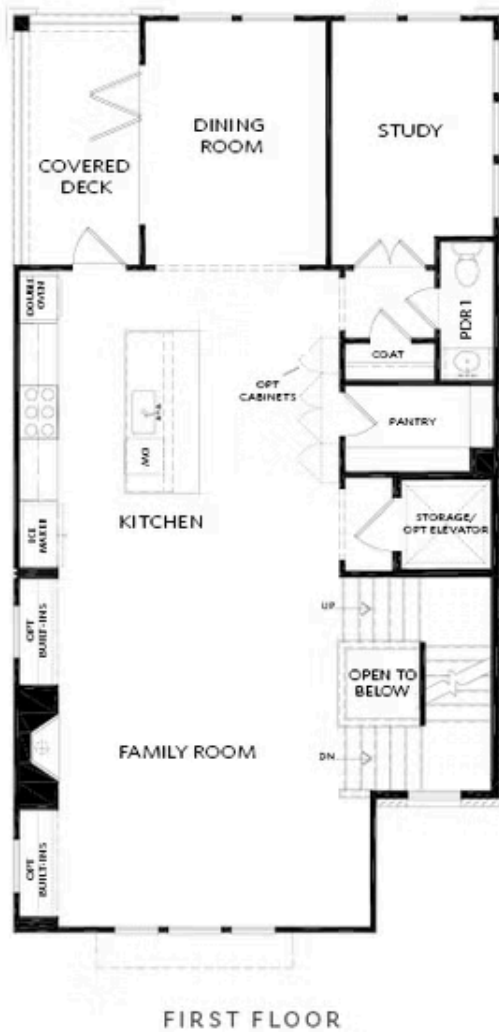
Please refer to actual blueprints for an accurate representation of home design. Home design and elevations subject to change without prior notice. Window, door and porch locations may vary by elevation. Subject to error, omission or withdrawal.





Want to Know More  
About This Home?

CONTACT OUR COMMUNITY SALES MANAGER  
NONE  
Call Us @ 678.392.7466



Lot 8

Want to Know More  
About This Home?

CONTACT OUR COMMUNITY SALES MANAGER

NONE

Call Us @ 678.392.7466



SECOND FLOOR

Lot 8

Want to Know More  
About This Home?

CONTACT OUR COMMUNITY SALES MANAGER

NONE

Call Us @ 678.392.7466



OPT Bedroom 4 w. Full Bath 4 ilo  
Bar Area and Powder Room

OPTION

Want to Know More  
About This Home?

CONTACT OUR COMMUNITY SALES MANAGER

NONE

Call Us @ 678.392.7466