




PRICED AT
\$971,190

 2105 Sq Ft

 3 Beds

 3.5 Baths

 2 Car Garage

 3.0 Story

ELEVATE YOUR NEW HOME EXPERIENCE... PARK WALK II IS THE NEWEST & CLOSEST WALKABLE COMMUNITY IN THE HEART OF DOWNTOWN ALPHARETTA!! BRAND NEW TOWNHOMES IN PARK WALK II, READY FOR YOU TO CALL HOME THIS SPRING; IMAGINE WALKING TO YOUR FAVORITE RESTAURANTS, THE FARMERS MARKET ON SATURDAY MORNINGS, MEETING FRIENDS ON THE GREEN OR FOR A RELAXING WALK ON THE ALPHA LOOP STEPS FROM YOUR FRONT DOOR. FOR A VERY LIMITED TIME, YOU CAN CHOOSE YOUR INTERIOR SELECTIONS!! Welcome to a lifestyle of refined ease. At Park Walke, we've traded the responsibilities of single-family living for curated luxury and architectural charm. The Chamberlain townhome invites you into a world of 10-foot ceilings and light-filled rooms that flow seamlessly from the fireside family room to a gourmet kitchen built for connection. Retreat to the top floor, where the owner's suite serves as a true "spa at home," complete with a vaulted ceiling and a freestanding soaking tub. With additional en-suite bedrooms located on the terrace and upper levels, guests and family will always enjoy their own private sanctuary. Experience the best of downtown Alpharetta right outside your door! COME SEE WHY YOU WANT TO CALL PARK WALK HOME AND NOT MISS ...

**Want to Know More
About This Home?**

CONTACT OUR COMMUNITY SALES MANAGER

NONE

Call Us @ 678.392.7466



Elevation R

Want to Know More
About This Home?

CONTACT OUR COMMUNITY SALES MANAGER

NONE

Call Us @ 678.392.7466



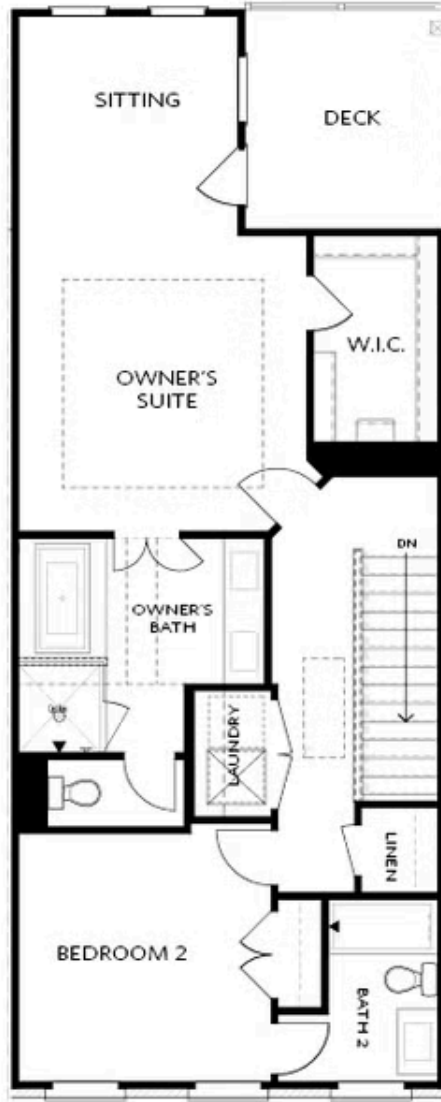
Elevation R

Want to Know More
About This Home?

CONTACT OUR COMMUNITY SALES MANAGER

NONE

Call Us @ 678.392.7466



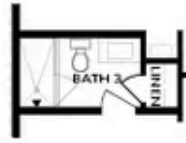
Elevation R

Want to Know More
About This Home?

CONTACT OUR COMMUNITY SALES MANAGER

NONE

Call Us @ 678.392.7466



OPT Shower

BASEMENT



OPT Linear Fireplace



OPT Fireplace

SECOND FLOOR



OPT Open Rail



OPT Walk-Through Shower



OPT Freestanding Tub/Shower Combo

**Want to Know More
 About This Home?**

CONTACT OUR COMMUNITY SALES MANAGER

NONE

Call Us @ 678.392.7466