







PRICED AT
\$927,790

-  2105 Sq Ft
-  3 Beds
-  3.5 Baths
-  2 Car Garage
-  3.0 Story

ELEVATE YOUR NEW HOME EXPERIENCE... IN THE HEART OF DOWNTOWN ALPHARETTA!! BRAND NEW TOWNHOMES IN PARK WALK II, JUST STEPS FROM TRULY THE CENTER OF EVERYTHING YOU WILL FALL IN LOVE WITH LIVING JUST STEPS TO EVERYTHING THE HEART OF ALPHARETTA HAS TO OFFER. FOR A LIMITED TIME, YOU CAN CHOOSE YOUR OWN PERSONAL INTERIOR SELECTIONS! EXQUISITE DETAILS AND BEAUTIFULLY CURATED TOWNHOMES THAT YOU DO NOT WANT TO MISS OUT ON. YOU CAN ENJOY THE FINEST FINISHES AND LUXURIOUS DETAILS WITHOUT ALL OF THE RESPONSIBILITY OF SINGLE FAMILY LIVING. YOU FOCUS ON THE INSIDE AND LET THE HOA TAKE CARE OF YOUR EXTERIOR BUILDING MAINTENANCE FOR THE ULTIMATE CAREFREE LIFESTYLE. THE CHAMBERLAIN TOWNHOME OFFERS STYLISH MODERN ELOQUENCE WITH TONS OF CHARM. 10' CEILINGS ON THE MAIN LEVEL WITH NATURAL LIGHT FLOODING WIDE OPEN SPACES, A KITCHEN WORTHY OF GATHERINGS BIG OR SMALL, A COVERED DECK ALLOWING A BREATH OF FRESH AIR ANYTIME, COZY UP AND ENJOY THE FIRESIDE FAMILY ROOM. UPSTAIRS YOU WILL ENJOY COMPLETE RELAXATION IN THE OVERSIZED OWNERS SUITE WITH SITTING ROOM AND OUTDOOR SPACE! A VAULTED OWNERS SPA RETREAT WITH SEPERATE SHOWER AND FREESTANDING TUB IS THE ICING ON THE CAKE... SECONDARY BEDROOMS ARE ON THE TOP ...

**Want to Know More
About This Home?**

CONTACT OUR COMMUNITY SALES MANAGER

NONE

Call Us @ 678.392.7466



Elevation R

Want to Know More
About This Home?

CONTACT OUR COMMUNITY SALES MANAGER

NONE

Call Us @ 678.392.7466



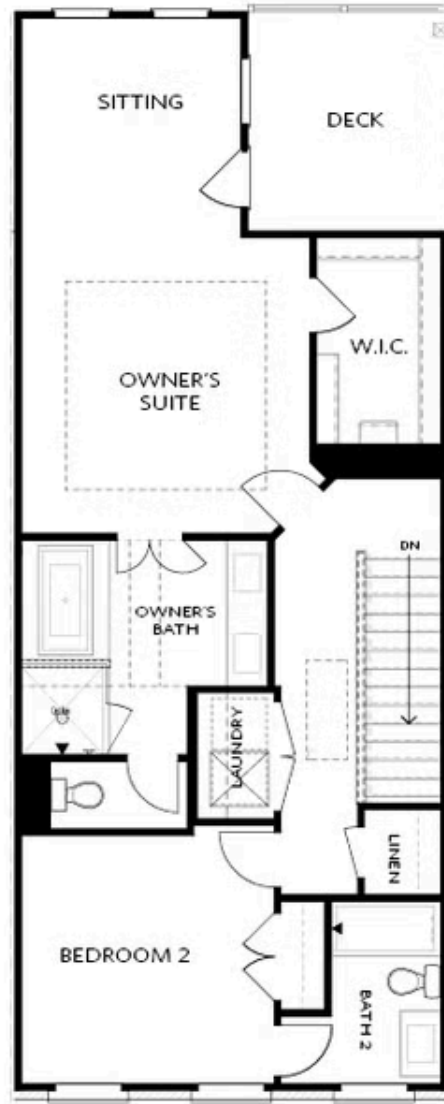
Elevation R

Want to Know More
About This Home?

CONTACT OUR COMMUNITY SALES MANAGER

NONE

Call Us @ 678.392.7466



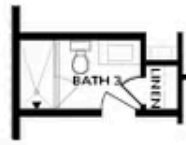
Elevation R

Want to Know More
About This Home?

CONTACT OUR COMMUNITY SALES MANAGER

NONE

Call Us @ 678.392.7466



OPT Shower

BASEMENT



OPT Linear Fireplace



OPT Fireplace

SECOND FLOOR



OPT Open Rail



OPT Walk-Through Shower



OPT Freestanding Tub/Shower Combo

**Want to Know More
 About This Home?**

CONTACT OUR COMMUNITY SALES MANAGER

NONE

Call Us @ 678.392.7466