




PRICED AT  
**\$971,670**

 2105 Sq Ft

 3 Beds

 3.5 Baths

 2 Car Garage

 3.0 Story

ELEVATE YOUR NEW HOME EXPERIENCE... PARK WALKE II OFFERS AN ELEVATED LIFESTYLE WITH MODERN FEATURES IN TOTAL CONVENIENCE RIGHT IN THE HEART OF DOWNTOWN ALPHARETTA!! JUST STEPS FROM TRULY THE CENTER OF EVERYTHING YOU WILL FALL IN LOVE WITH LIVING JUST STEPS TO EVERYTHING THE HEART OF ALPHARETTA HAS TO OFFER. DO NOT MISS THIS BEAUTIFUL LIGHT FILLED END UNIT, VERY LIMITED TIME FOR YOU TO CHOOSE YOUR OWN SELECTIONS!! EARLY SUMMER COMPLETION AND MOVE IN OPPORTUNITY. EXQUISITE DETAILS AND BEAUTIFULLY CURATED TOWNHOMES OFFERING FINISHES AND LUXURIOUS DETAILS WITHOUT ALL OF THE RESPONSIBILITY OF SINGLE FAMILY LIVING. YOU FOCUS ON THE INSIDE AND LET THE HOA TAKE CARE OF YOUR EXTERIOR BUILDING MAINTENANCE FOR THE ULTIMATE CARE FREE LIFESTYLE. THE CHAMBERLAIN TOWNHOME OFFERS STYLISH MODERN ELEGANCE WITH TONS OF CHARM. 10' CEILINGS ON THE MAIN LEVEL WITH NATURAL LIGHT FLOODING WIDE OPEN SPACES, A KITCHEN WORTHY OF GATHERINGS BIG OR SMALL, A COVERED DECK ALLOWING A BREATH OF FRESH AIR ANYTIME, COZY UP AND ENJOY THE FIRESIDE FAMILY ROOM. UPSTAIRS YOU WILL ENJOY COMPLETE RELAXATION IN THE OVERSIZED OWNERS SUITE WITH SITTING ROOM AND OUTDOOR SPACE! A VAULTED OWNERS SPA RETREAT WITH SEPERATE SHOWER AND FREESTANDING TUB IS THE ICING ...

**Want to Know More  
About This Home?**

CONTACT OUR COMMUNITY SALES MANAGER

**NONE**

Call Us @ 678.392.7466



Elevation R

Want to Know More  
About This Home?

CONTACT OUR COMMUNITY SALES MANAGER

NONE

Call Us @ 678.392.7466



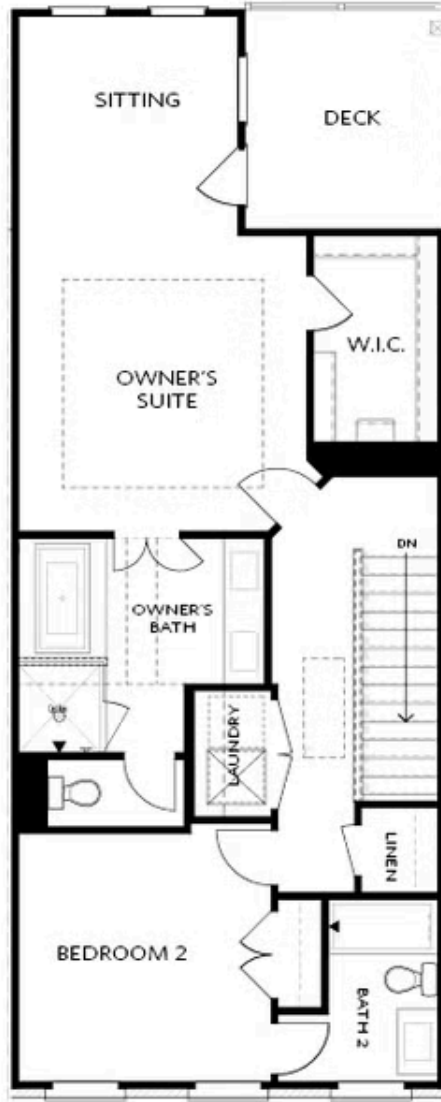
Elevation R

Want to Know More  
About This Home?

CONTACT OUR COMMUNITY SALES MANAGER

NONE

Call Us @ 678.392.7466



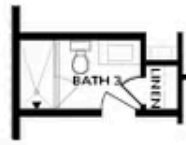
Elevation R

Want to Know More  
About This Home?

CONTACT OUR COMMUNITY SALES MANAGER

NONE

Call Us @ 678.392.7466



OPT Shower

BASEMENT



OPT Linear Fireplace

SECOND FLOOR



OPT Fireplace



OPT Open Rail



OPT Walk-Through Shower



OPT Freestanding Tub/Shower Combo

Want to Know More  
 About This Home?

CONTACT OUR COMMUNITY SALES MANAGER

NONE

Call Us @ 678.392.7466