



PRICED FROM
\$1,640,000

 3,511 Sq Ft

 4 Beds

 4.5 Baths

 2 Car Garage

 3.0 Story

- Spacious Townhome
- Open Main Level Concept with a view from the Kitchen to the Family Room
- Separate Open Dining Room off the Family Room
- Guest are Greeted by a Covered Front Porch and Large Foyer
- Covered Patio off the Kitchen the Access to a Private Courtyard
- Massive Owner's Suite with an Enormous W.I.C, Shower with a Detached Soaking Tub, Separate Vanities & Water Closet
- 2 Guest Suites, one with access to a Private Covered Deck on the Second Floor

[Read More Online](#)

Available Elevations





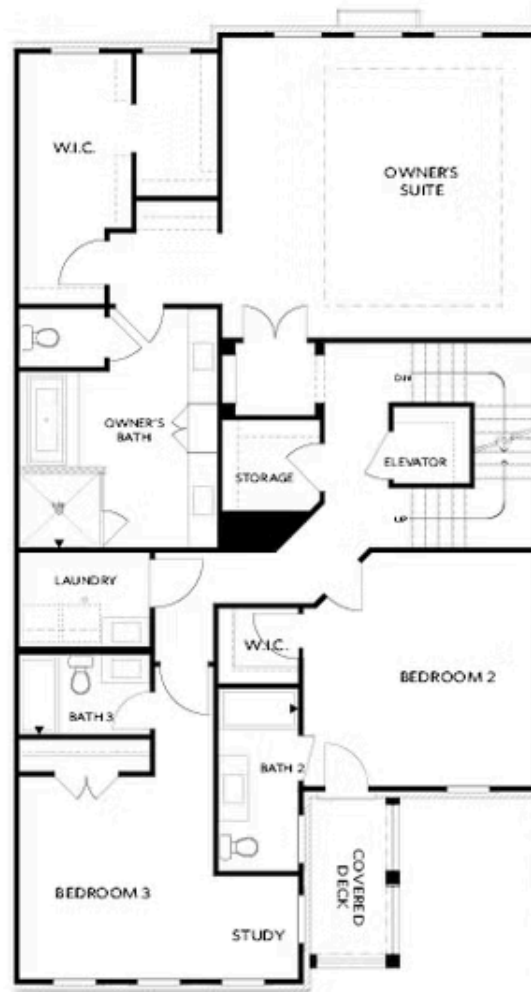
Elevation E Floor Plan Layout

Want to Know More
About This Home?

CONTACT OUR COMMUNITY SALES MANAGER

NONE

Call Us @ 678.392.7466



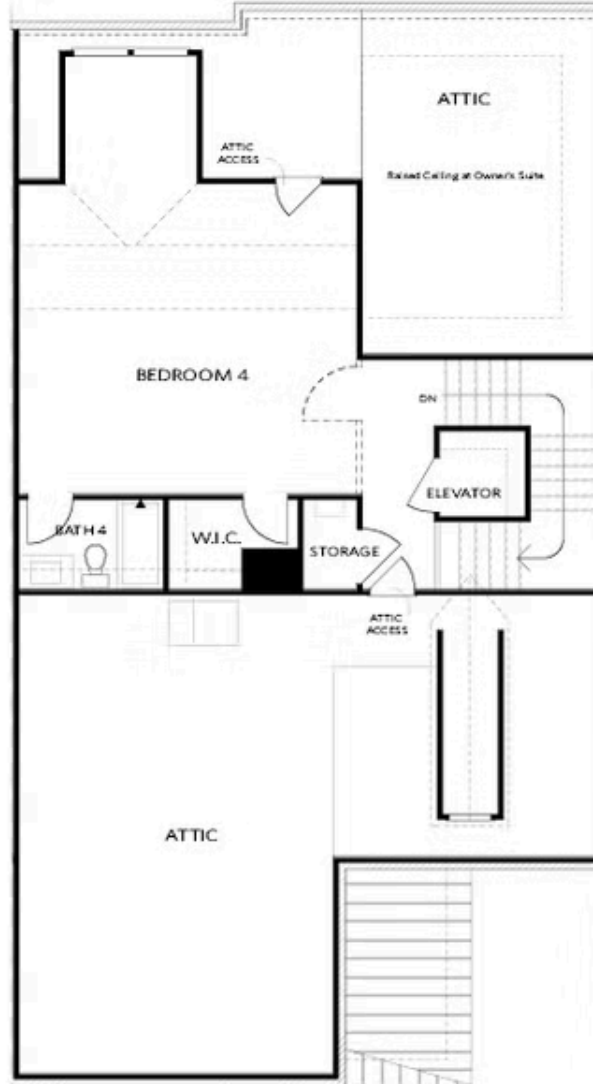
Elevation E Floor Plan Layout

Want to Know More
About This Home?

CONTACT OUR COMMUNITY SALES MANAGER

NONE

Call Us @ 678.392.7466



Elevation E Floor Plan Layout

Want to Know More
About This Home?

CONTACT OUR COMMUNITY SALES MANAGER

NONE

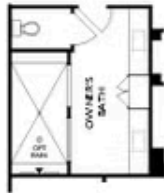
Call Us @ 678.392.7466



OPT Outdoor Fireplace
End Unit



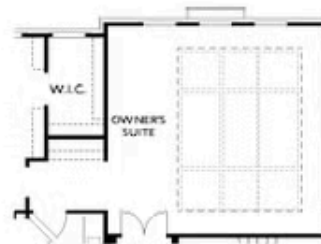
OPT Outdoor Fireplace
Middle Unit



OPT Walk-In Shower



OPT Freestanding Tub



OPT Coffered Ceiling

Want to Know More
About This Home?

CONTACT OUR COMMUNITY SALES MANAGER

NONE

Call Us @ 678.392.7466