








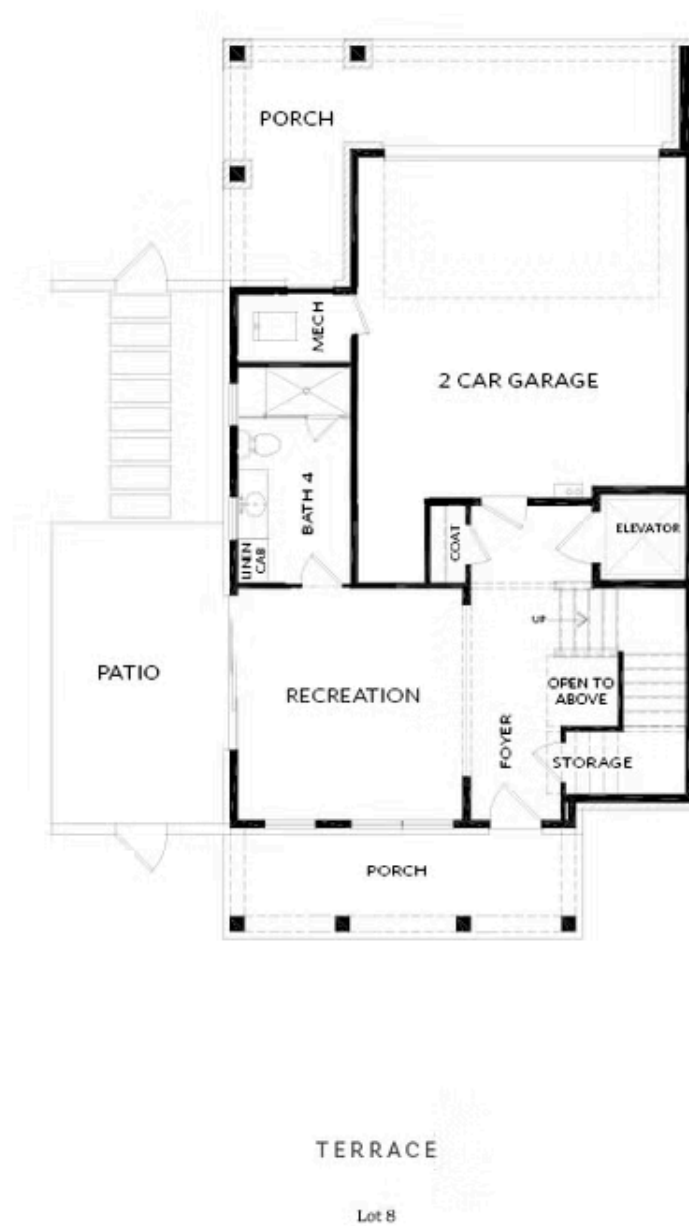
PRICED AT
\$1,763,840

-  2912 Sq Ft
-  3 Beds
-  4.5 Baths
-  2 Car Garage
-  3.0 Story

Discover the perfect blend of modern living and urban convenience with this stunning single-family home located in the heart of downtown Alpharetta. Park Walke offers a vibrant lifestyle, just steps away from shopping, restaurants, and the scenic Alpha Loop....ONLY 3 SINGLE FAMILY HOMES REMAIN, YOU DO NOT WANT TO MISS THIS OPPORTUNITY! YOU WILL FIND YOURSELF WALKING TO ALL OF THE AMAZING ACTIVITIES TO DOWNTOWN ALPHARETTA & AVALON. ENDLESS RESTAURANTS & ALL THE SHOPPING YOU CAN NEED/WANT. THIS UNIQUELY CRAFTED HOME WILL OFFER A PRIVATE COURTYARD WHERE YOU WILL ENJOY RELAXING AND ENTERTAINING BY THE OUTDOOR FIREPLACE ALL YEAR ROUND. THIS 3 BEDROOM / 4.5 BATH HOME OFFERS AN OPEN CONCEPT LAYOUT WITH TONS OF NATURAL LIGHTING STREAMING IN THROUGH BEAUTIFUL WINDOWS, A PRIVATE OFFICE ON THE MAIN LEVEL SURROUNDED IN WINDOWS, A DINING ROOM WITH PANORAMIC FOLDING GLASS DOOR OPENING ON TO A COVERED DECK, A STUNNING OPEN KITCHEN WITH CABINETS TO THE CEILING, NATURAL GAS 6 BURNER DUAL FUEL RANGE, A 9 FOOT LONG ISLAND AND FANTASTIC WALK IN PANTRY! HOME WILL BE READY FOR AN EARLY SPRING MOVE IN. MORE OF THE EQUITABLE DETAILS AND FINISHES INCLUDE AN ELEVATOR W/SERVICE TO ALL FLOORS, HARDWOOD FLOORING IN ALL ...

**Want to Know More
About This Home?**

CONTACT OUR COMMUNITY SALES MANAGER
NONE
Call Us @ 678.392.7466



Want to Know More
About This Home?

CONTACT OUR COMMUNITY SALES MANAGER

NONE

Call Us @ 678.392.7466



Lot 8

Want to Know More
About This Home?

CONTACT OUR COMMUNITY SALES MANAGER

NONE

Call Us @ 678.392.7466



SECOND FLOOR

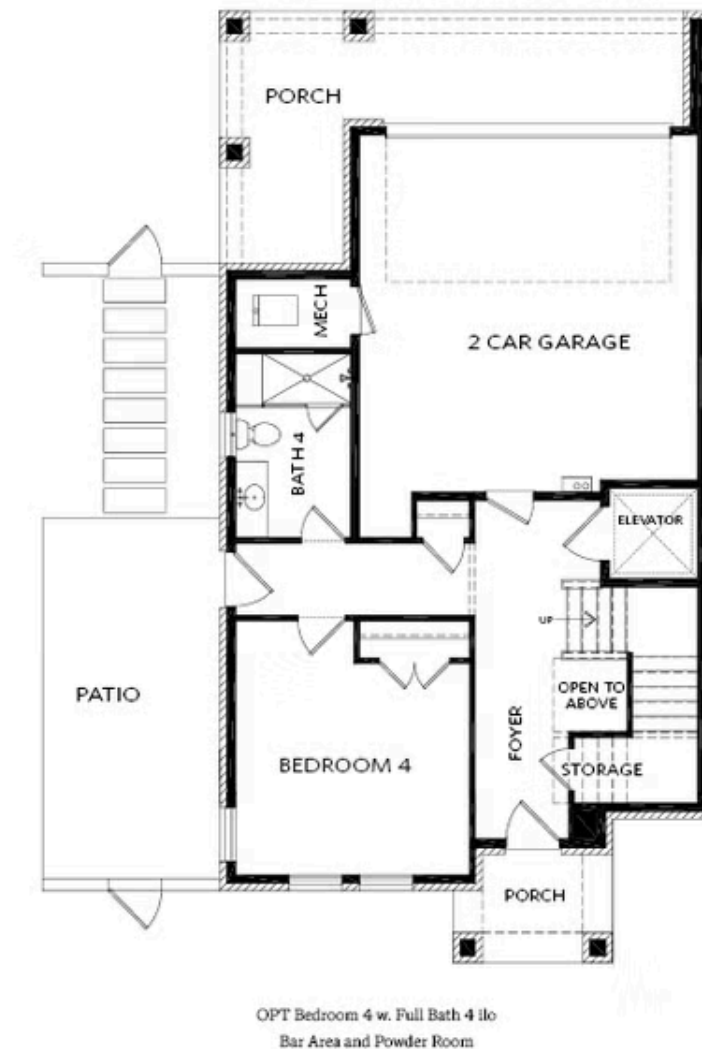
Lot 8

Want to Know More
About This Home?

CONTACT OUR COMMUNITY SALES MANAGER

NONE

Call Us @ 678.392.7466



OPTION

Want to Know More
About This Home?

CONTACT OUR COMMUNITY SALES MANAGER

NONE

Call Us @ 678.392.7466