




PRICED AT
\$1,692,500

 3022 Sq Ft

 3 Beds

 4.5 Baths

 2 Car Garage

 3.0 Story

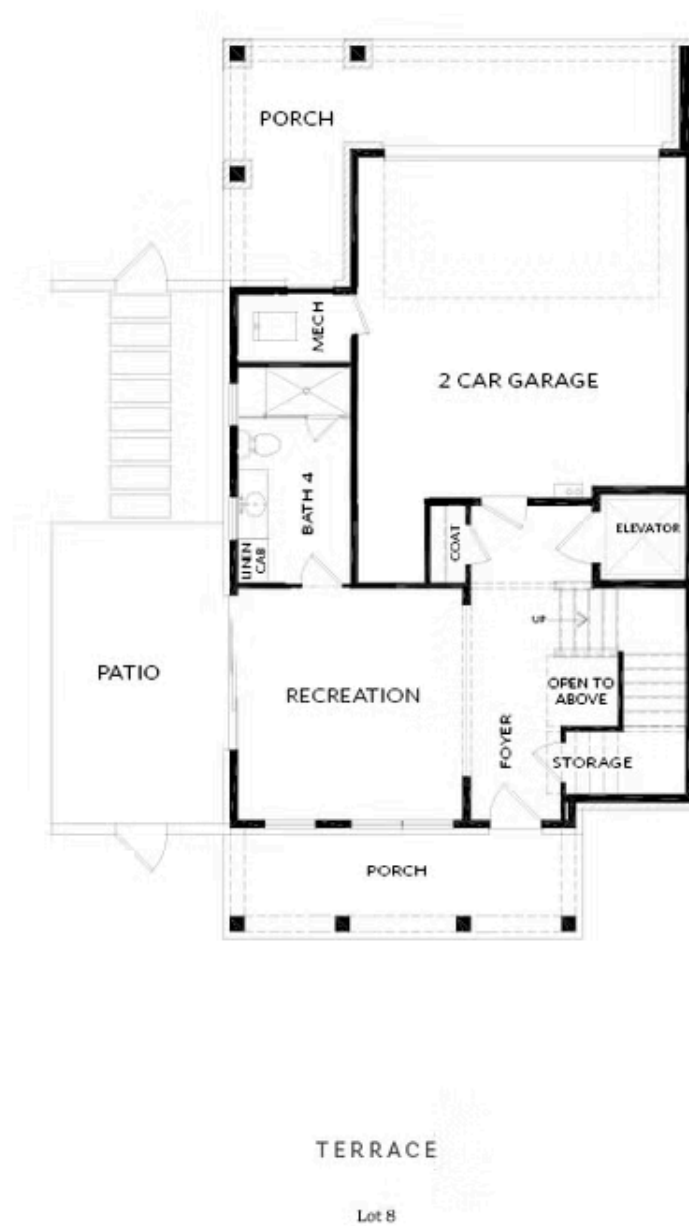
PARK WALKE IS THE ONLY NEW SINGLE FAMILY COMMUNITY THIS CLOSE TO DOWNTOWN ALPHARETTA; YOU HAVE A LIMITED TIME TO COME PERSONALIZE THIS HOME WITH YOUR OWN SELECTIONS!! MAKE YOUR APPOINTMENT TODAY TO SEE WHY EVERYONE IS TALKING ABOUT THIS NEW COMMUNITY AND THE AMAZING FEATRES YOU TOO CAN ENJOY. YOU WILL FIND YOURSELF WALKING TO ALL OF THE AMAZING ACTIVITIES TO DOWNTOWN ALPHARETTA & AVALON. ENDLESS RESTARUANTS & ALL THE SHOPPING YOU CAN NEED/WANT. THIS UNIQUELY CRAFTED HOME WILL OFFER A PRIVATE COURTYARD WHERE YOU WILL ENJOY RELAXING AND ENTERTAINING BY THE OUTDOOR FIREPLACE ALL YEAR ROUND. THIS 3 BEDROOM / 3 FULL BATH/ 2 HALF BATH HOME OFFERS AN OPEN CONCEPT LAYOUT WITH TONS OF NATURAL LIGHTING STREAMING IN THROUGH BEAUTIFUL WINDOWS, A PRIVATE OFFICE ON THE MAIN LEVEL SURROUNDED IN WINDOWS, A DINING ROOM WITH PANORAMIC FOLDING GLASS DOOR OPENING ON TO A COVERED DECK, A STUNNING OPEN KITCHEN WITH CABINETS TO THE CEILING, NATURAL GAS 6 BURNER DUAL FUEL RANGE, A 9 FOOT LONG ISLAND AND FANTASTIC WALK IN PANTRY! VERY LIMITED TIME FOR YOU TO MAKE ALL INTERIOR SELECTIONS ON THIS NEW HOME, DON'T WAIT! MORE OF THE EQUISITE DETAILS AND FINISHES INCLUDE AN ELEVATOR ...

**Want to Know More
About This Home?**

CONTACT OUR COMMUNITY SALES MANAGER

NONE

Call Us @ 678.392.7466



Want to Know More
About This Home?

CONTACT OUR COMMUNITY SALES MANAGER

NONE

Call Us @ 678.392.7466



Lot 8

Want to Know More
About This Home?

CONTACT OUR COMMUNITY SALES MANAGER

NONE

Call Us @ 678.392.7466



SECOND FLOOR

Lot 8

Want to Know More
About This Home?

CONTACT OUR COMMUNITY SALES MANAGER

NONE

Call Us @ 678.392.7466



OPT Bedroom 4 w. Full Bath 4 ilo
Bar Area and Powder Room

OPTION

Want to Know More
About This Home?

CONTACT OUR COMMUNITY SALES MANAGER
NONE
Call Us @ 678.392.7466