



PRICED AT  
**\$530,640**

 1490 Sq Ft

 2 Beds

 2.0 Baths

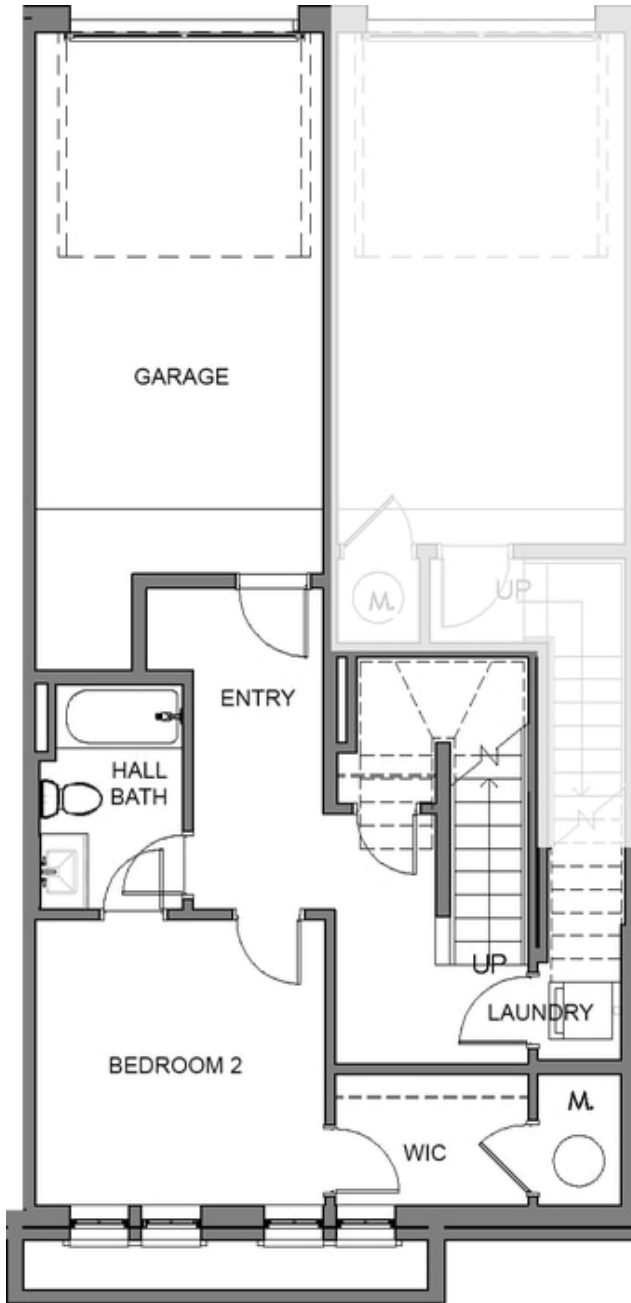
 1 Car Garage

 2.0 Story

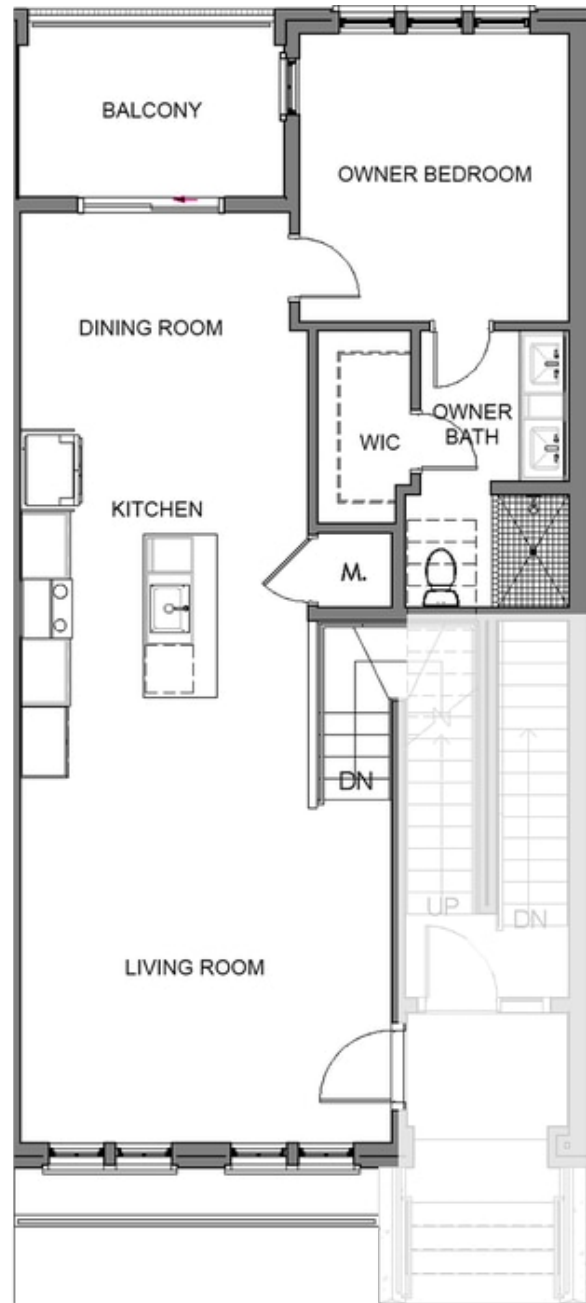
**AVAILABLE TO CLOSE IN 2022! ASK ABOUT OUR FABULOUS FALL INCENTIVES!!!** Crawford Stacked Townhome by The Providence Group. Quick Move in! November 2022! \$20,000 towards Closing Costs/Financing with preferred Lenders, and 50% off Builder Deposit! Incredible mixed-use, live/work/play designed community! Steps from The Maxwell Retail Featuring Rena's Italian Fishery, Fairway Social, July Moon also steps from the new Starbuck's and Shake Shack, on the Alpha Loop and only 1/2 mile from the Alpha Square! You cannot beat the location! This two story home features an open design, GE stainless appliances, quartz kitchen countertops, huge island for entertaining and tons of storage! 1 car attached garage with driveway for additional parking! Beautiful beige condo package with blinds and hardwoods throughout! Also includes a refrigerator! Swimming pool, cabana & bocce ball! Photos shown are representative of the floorplan but are not photos of the actual home. Building Under Construction. Sales Office located at Atley Community. Come live life Elevated with The Providence Group!

**Want to Know More  
About This Home?**

CONTACT OUR COMMUNITY SALES MANAGER  
Call Us @ 470.436.2641



Level 1



Level 2

**Want to Know More  
 About This Home?**

CONTACT OUR COMMUNITY SALES MANAGER  
 Call Us @ 470.436.2641