



PRICED AT
\$507,740

 1490 Sq Ft

 2 Beds

 2.0 Baths

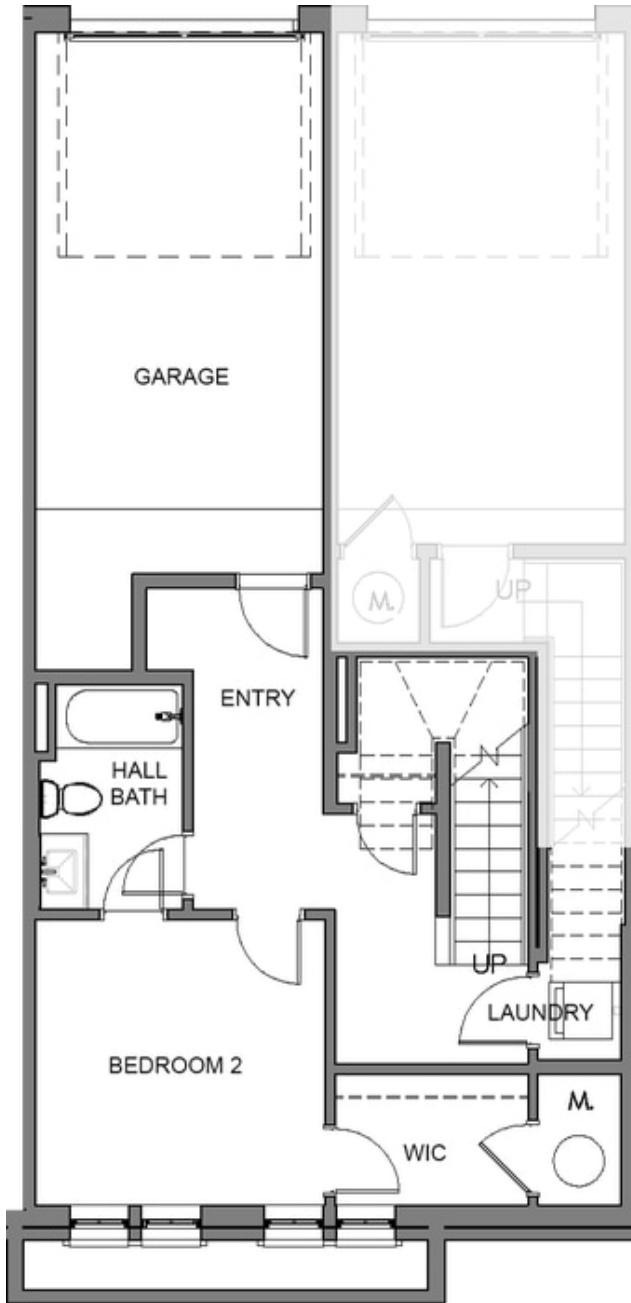
 1 Car Garage

 2.0 Story

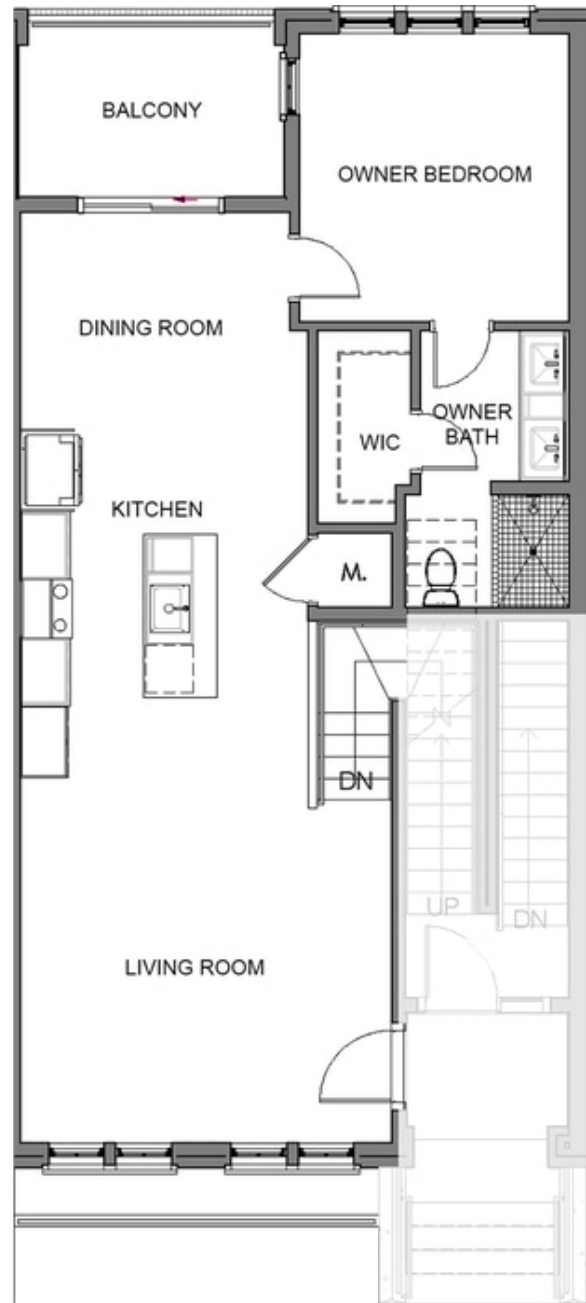
Crawford Stacked Townhome by The Providence Group. Move in Oct/Nov 2022. Incredible mixed-use, live/work/play designed community! Steps from The Maxwell Retail, right on the Alpha Loop and only 1/2 mile from the Alpha Square! You cannot beat the location! This two story home features an open design, whirlpool appliances, quartz kitchen countertops, huge island for entertaining and tons of storage! 1 car attached garage with driveway for additional parking! Purchaser can still select from one of our gorgeous, included design packages. Swimming pool, cabana & bocce ball! \$5000 closing costs incentive when using preferred lender, GreenBrick Mortgage. Photos shown are representative of the floorplan but are not photos of the actual home. Come Make Space for Life!

**Want to Know More
About This Home?**

CONTACT OUR COMMUNITY SALES MANAGER
Call Us @ 470.436.2641



Level 1



Level 2

**Want to Know More
 About This Home?**

CONTACT OUR COMMUNITY SALES MANAGER
 Call Us @ 470.436.2641