



PRICED AT  
**\$464,900**

 1340 Sq Ft

 1 Beds

 1.0 Baths

 1 Car Garage

 3.0 Story

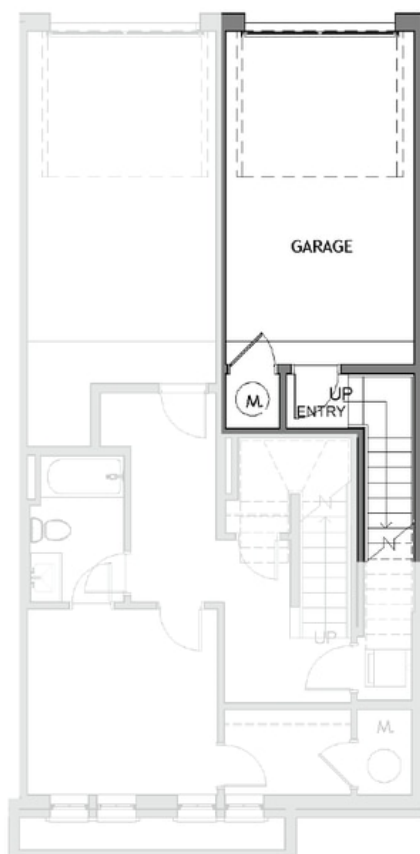
Edgehill by The Providence Group. Interior Unit! The Maxwell is a wonderfully designed community where luxury meets lifestyle! Top floor condo just steps away from what will be the newest place to be entertained at Fairway Social, City Eats Kitchen and Amazing Dining at Rena's, Lily's Sushi, Ponko Chicken, July Moon at The Maxwell Retail. Condo will feature upscale GE stainless appliances, quartz counters, White Shaker cabinets & large deck. Includes small den or office! Private garage and driveway long enough for a second car. Pool, cabana, clubhouse, firepits, BBQs, access to Alpha Loop, pocket parks! HOA maintained landscape in the heart of Downtown Alpharetta. Walkable to City Center/quickly get to Avalon & 400N/S. Hurry to be part of the exciting new community. \$5k closing costs with preferred lender. Pictures for information only. Home is under construction. Estimated Completion Nov/Dec 2022.

**Want to Know More  
About This Home?**

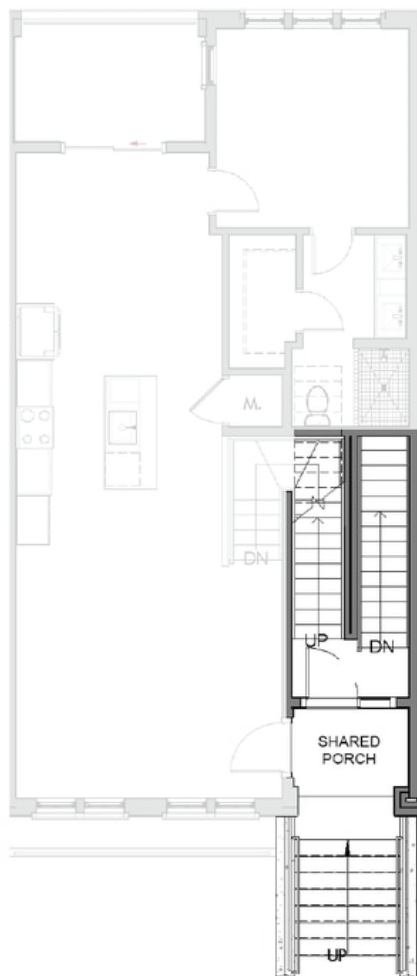
CONTACT OUR NEW HOME NAVIGATOR

**NONE**

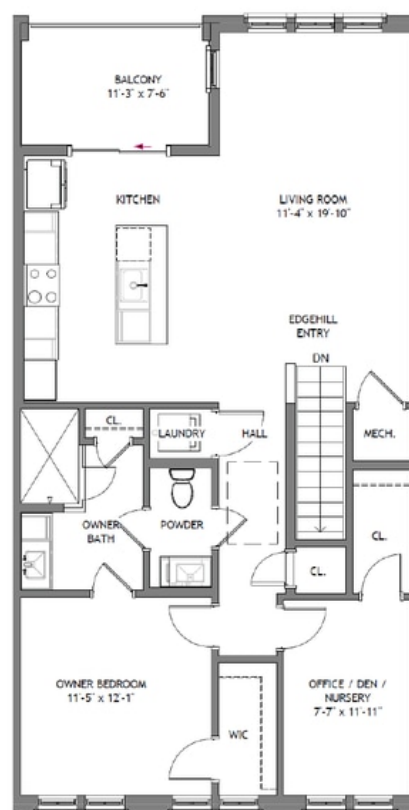
Call Us @ 470.436.2641



Level 1



Level 2



Level 3

**Want to Know More  
About This Home?**

CONTACT OUR NEW HOME NAVIGATOR

**NONE**

Call Us @ 470.436.2641