



PRICED AT
\$467,900

 1340 Sq Ft

 1 Beds

 1.5 Baths

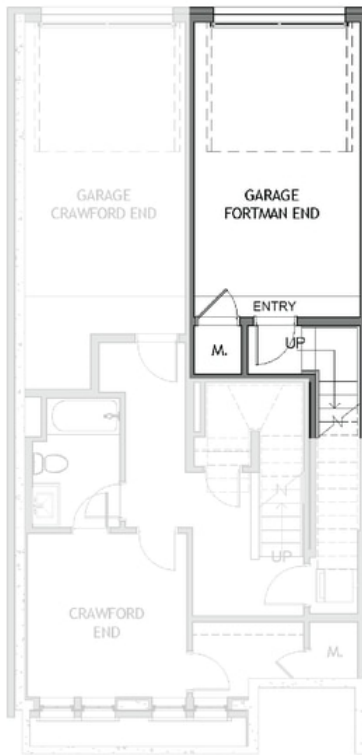
 1 Car Garage

 3.0 Story

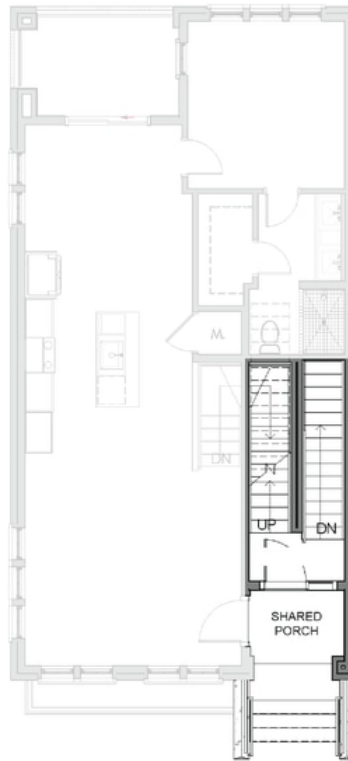
MOVE IN READY MODEL FOR SALE! ASK US ABOUT OUR FALL INCENTIVIES! Run don't walk to this unique opportunity! Stacked Townhome by The Providence Group. Live in a wonderfully designed community where luxury meets lifestyle! Top floor stacked townhome just steps away from what is the newest place to be entertained at Fairway Social, enjoy amazing food at Rena's, Lily's sushi and Ponko Chicken at The Maxwell Retail. Our Model Condo features upscale Whirlpool stainless appliances, gorgeous white quartz counters, Beautiful white cabinets with soft close door cabinets, oversized island & large covered deck. Washer and Dryer included. Pool, cabana, clubhouse, Bocce Ball court, access to Alpha Loop, pocket parks, HOA maintained landscape. The Maxwell is just 2 blocks from heart of Downtown Alpharetta. Walkable to City Center and ~1 mile to Avalon & HWY 400. 1-2-8 Warranty. \$20,000 in Closing costs with preferred Lenders and half off builder deposit!! Come see this amazing location at The Maxwell with The Providence Group! Sales office now located at Atley Community.

**Want to Know More
About This Home?**

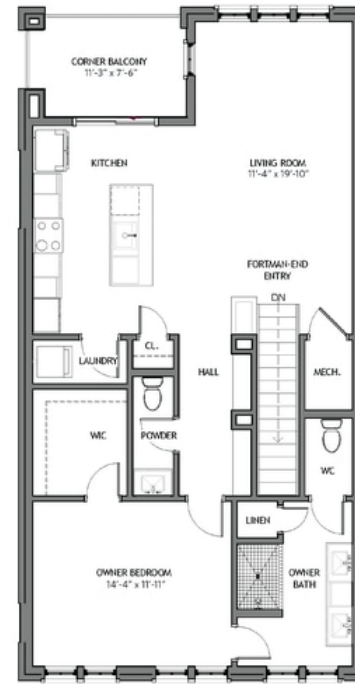
CONTACT OUR COMMUNITY SALES MANAGER
Call Us @ 470.436.2641



First Floor



Second Floor



Third Floor

**Want to Know More
About This Home?**

CONTACT OUR COMMUNITY SALES MANAGER
Call Us @ 470.436.2641