



PRICED AT
\$504,900

 1340 Sq Ft

 1 Beds

 1.5 Baths

 1 Car Garage

 3.0 Story

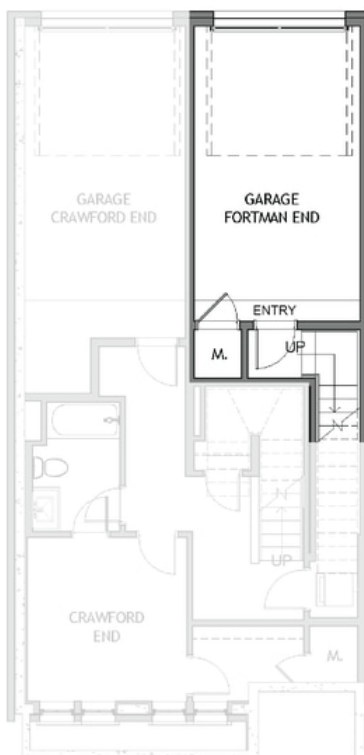
Elevate your life in 2023 with a new home by The Providence Group and \$5,000 towards closing cost with one of our preferred lenders!. Hurry, Final Opportunities! End Unit! The Providence Group's Fortman Plan. Ready for winter 2023 closing! *2022 OBIE AWARD WINNER FOR BEST MIXED USE COMMUNITY* Live in a wonderfully designed community where luxury meets lifestyle! Top floor stacked townhome just steps away from a fun place to be entertained, Fairway Social, enjoy amazing food at Rena's, Lily's sushi and delicious treats/coffee at July Moon at Maxwell Retail. Wonderful open concept with tons of natural light. Condo will feature GE stainless appliances, gorgeous quartz counters, soft close doors/drawers, oversized island perfect for entertaining. Plus a cozy covered deck that will be a ideal spot to enjoy morning coffee or a glass of wine in the evening. The Maxwell has beautiful amenities with a Pool, cabana, Bocce Ball court, firepit and access to Alpha Loop. The Maxwell also has a quaint pocket park and best part is you have HOA maintained exterior and common space. The Maxwell is just 2 blocks from heart of Downtown Alpharetta. Walkable to City Center and ~1 mile to Avalon & HWY 400. 1-2-8 ...

**Want to Know More
About This Home?**

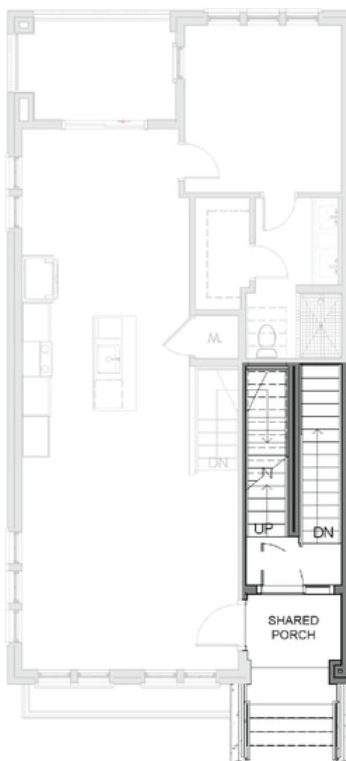
CONTACT OUR NEW HOME NAVIGATOR

NONE

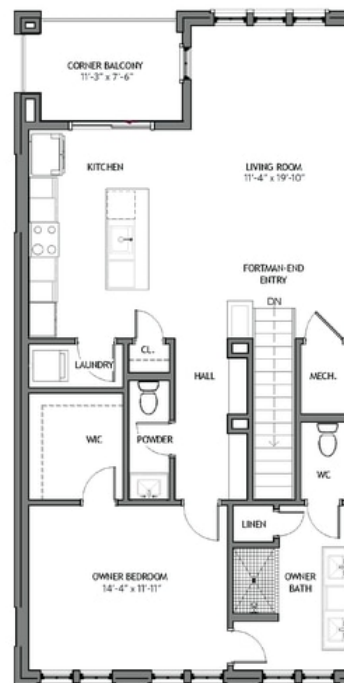
Call Us @ 470.436.2641



First Floor



Second Floor



Third Floor

Want to Know More
About This Home?

CONTACT OUR NEW HOME NAVIGATOR

NONE

Call Us @ 470.436.2641