



PRICED AT
\$492,630

 1340 Sq Ft

 1 Beds

 1.5 Baths

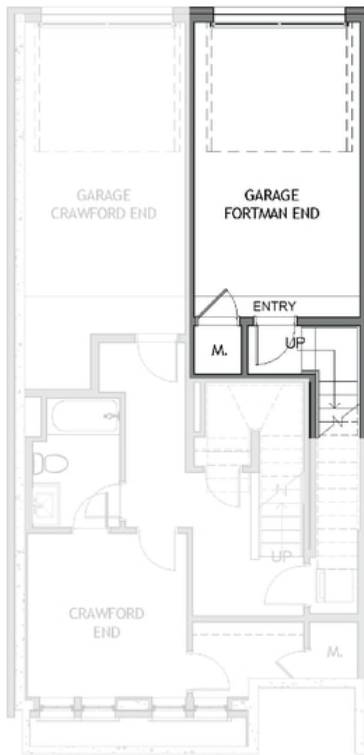
 1 Car Garage

 3.0 Story

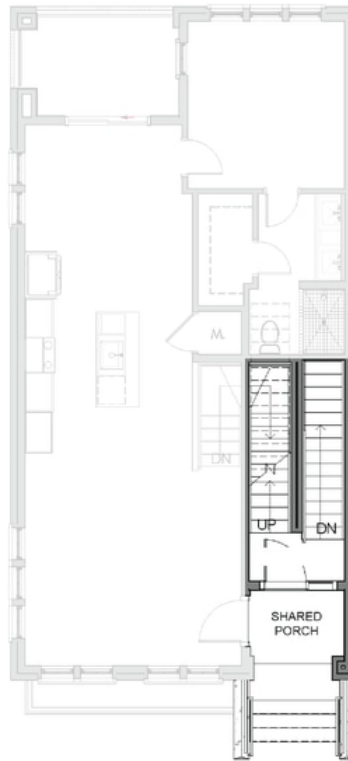
Elevate your life in 2023 with a new home by The Providence Group and \$5,000 towards closing cost with our preferred lenders! *OBIE AWARD WINNER FOR BEST MIXED USE COMMUNITY* Final Opportunities! Hurry, Only 1 Fortman remains! Stacked Condo by The Providence Group. Live in a wonderfully designed community where luxury meets lifestyle! Top floor stacked townhome just steps away from what is the newest place to be entertained at Fairway Social, enjoy amazing food at Rena's, Lily's sushi and Ponko Chicken and have a sweet treat at July Moon at The Maxwell Retail. GE stainless appliances, gorgeous quartz counters, soft close doors/drawer cabinets. Bright white kitchen cabinets with an oversized island. You will love to entertain in this space! This home also has a separate dining area which transitions to your covered porch. This space is perfect for morning coffee or afternoon cocktails! The Maxwell has Pool, cabana, clubhouse, Bocce Ball, on the Alpha Loop, pocket parks, HOA maintained landscape. The Maxwell is just 2 blocks from heart of Downtown Alpharetta. Walkable to City Center and ~1 mile to Avalon & HWY 400. 1-2-8 Warranty. Home Under construction. Estimated completion is end of the year. Come live life Elevated ...

**Want to Know More
About This Home?**

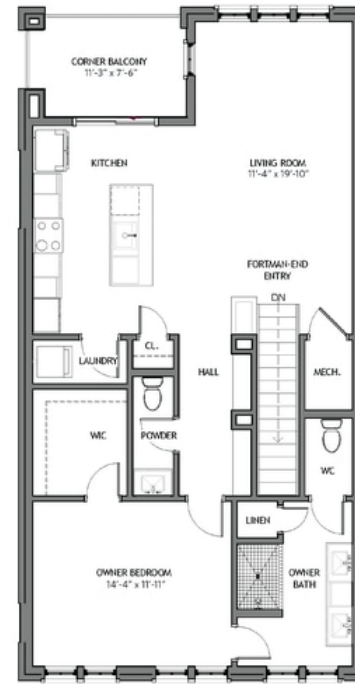
CONTACT OUR COMMUNITY SALES MANAGER
Call Us @ 470.436.2641



First Floor



Second Floor



Third Floor

**Want to Know More
 About This Home?**

CONTACT OUR COMMUNITY SALES MANAGER
 Call Us @ 470.436.2641