



PRICED AT
\$544,900

 1490 Sq Ft

 2 Beds

 2.0 Baths

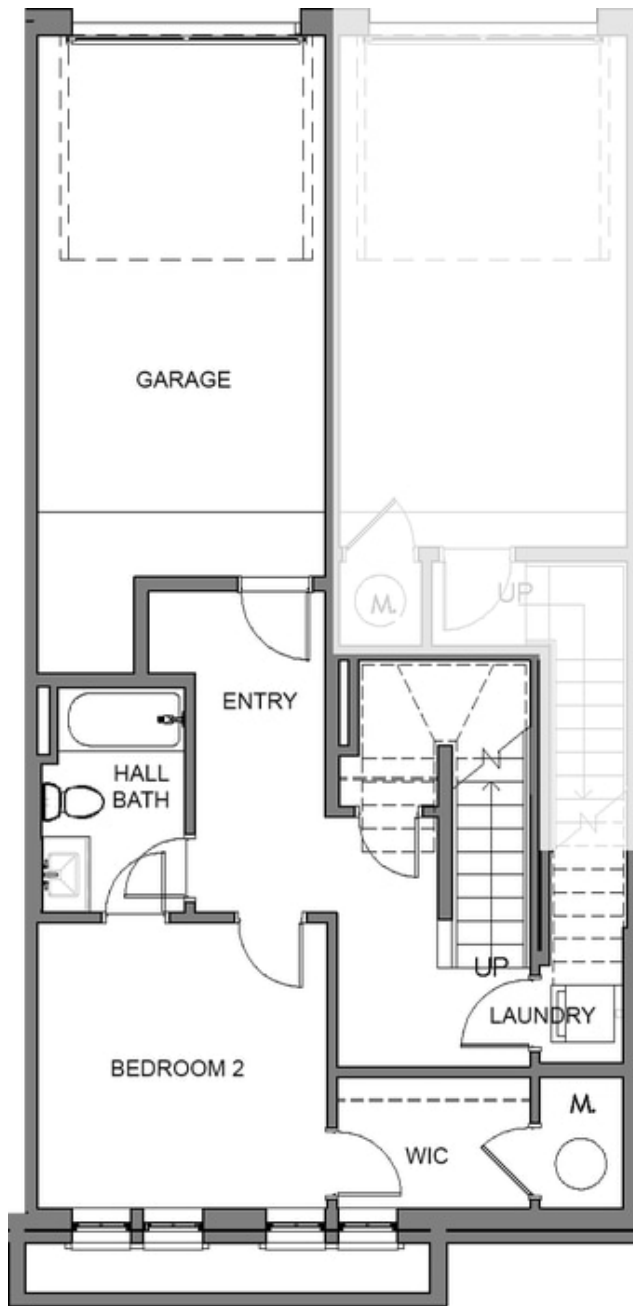
 1 Car Garage

 2.0 Story

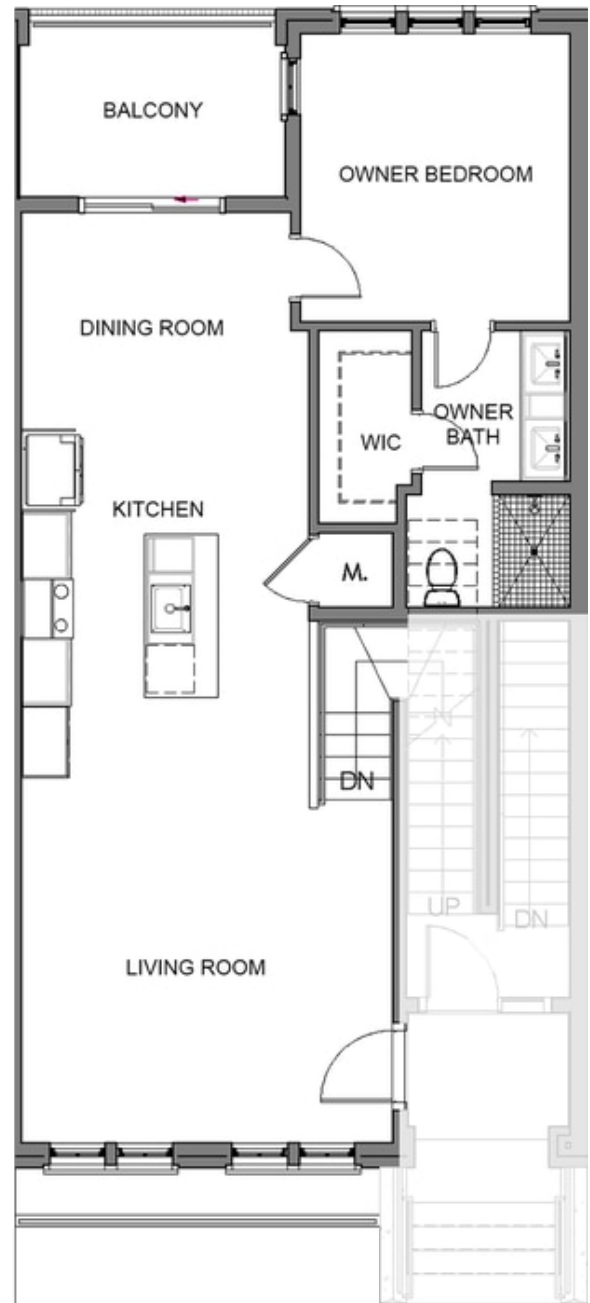
Elevate your life in 2023 with a new home by The Providence Group and \$5,000 towards closing cost! Only 5 Two bedrooms left! Crawford Stacked Townhouse by The Providence Group. Featuring a 2-story 4-sided brick condo steps away from what is the best place to be entertained, go shopping & enjoy dinner at The Maxwell Retail featuring Fairway Social and Rena's Italian Fishery! Live music at City Eats and delicious coffee and treats at July moon! New Starbucks and Shake Shack just steps from this new home. Condo will feature upscale GE stainless appliances, Beautiful quartz counters, open floor plan & large covered porch. 2 huge storage closets to keep all your goodies stored. Lots of windows letting tons of natural light in. 1 car garage with driveway long enough for a second vehicle. Maxwell amenities include, Pool, cabana, clubhouse, firepits, access to Alpha Loop and pocket parks and Bocce ball. HOA maintained landscape in the heart of Downtown Alpharetta area! Walkable to City Center/quickly get to Avalon & 400N/S. Home is under construction, photos only for informational purposes! Estimated completion December 2023. Ask agent about our incentives! Life is Elevated at The Maxwell! Sales office now located in our ...

**Want to Know More
About This Home?**

CONTACT OUR COMMUNITY SALES MANAGER
Call Us @ 470.436.2641



Level 1



Level 2

**Want to Know More
 About This Home?**

CONTACT OUR COMMUNITY SALES MANAGER
 Call Us @ 470.436.2641