



PRICED AT
\$976,845

 2515 Sq Ft

 4 Beds

 3.5 Baths

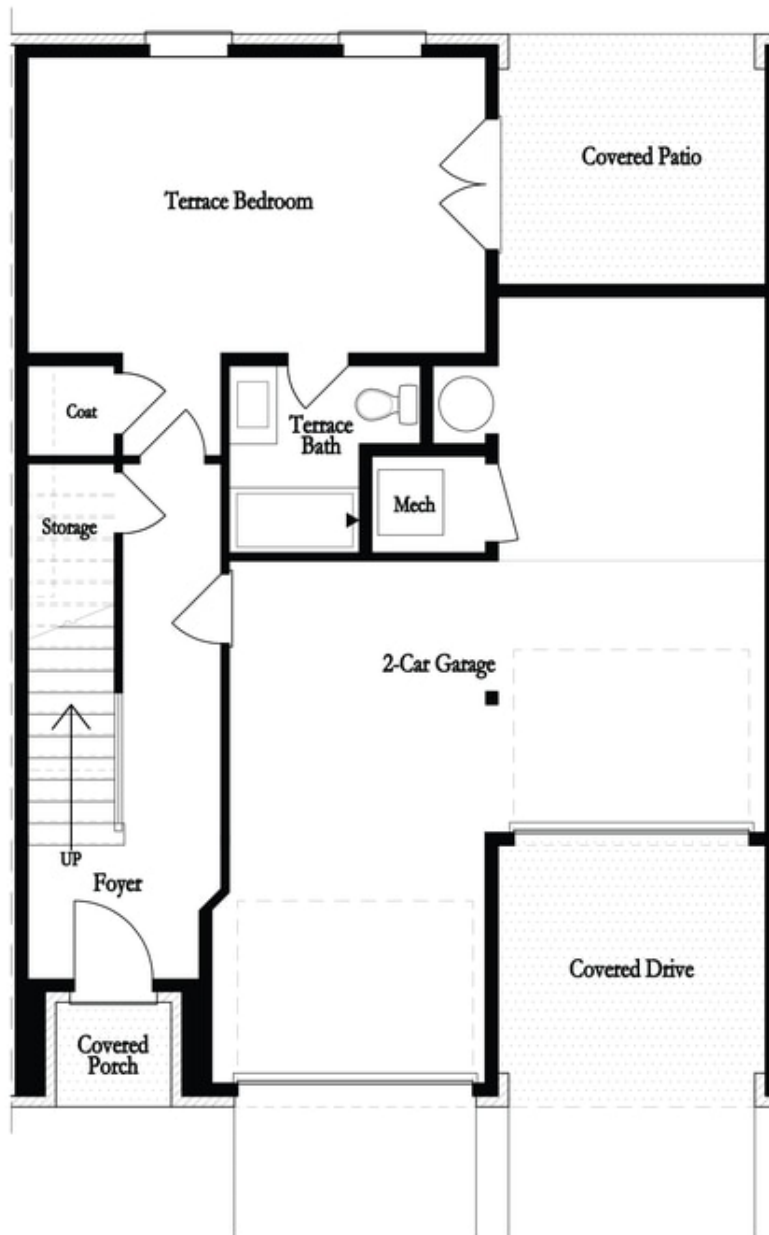
 2 Car Garage

 3.0 Story

Elevate your life in 2023 with a new home by The Providence Group and **\$25,000 Towards Closing Cost for Closings by 9/30 with any one of Seller's 4-Preferred Lenders** Run, don't walk to our Final Opportunities! *2022 OBIE WINNER FOR BEST MIXED USE COMMUNITY!* The Providence Groups Elegant Townhouse-Mayfield I. The Maxwell features urban, mercantile-inspired architecture set along quiet streets, creating an authentic city center setting that will welcome you home and inspire you to set out and explore. Fantastic outdoor spaces offer the perfect spot to relax or entertain. Inside, bright open interior designs crafted with your life in mind will make it easy to feel right at home. The Maxwell offers two distinct home collections including our condo Stacks Collection and our townhome Brownstone Collection. Just steps away from Maxwell retail featuring Fairway Social, Rena's Italian Fishery, City Eats Kitchen and Yummy treats at July Moon. The Maxwell is on the Alpha loop and 1/2 mile from Alpharetta City Center. 4 Bd/3.5 Bath Open Concept Townhome, main floor highlights Beautiful White stacked Kitchen cabinets with an oversized island and farmhouse sink. The amazing kitchen overlooks lovely family room with tons of natural light. This wonderful home includes 3 ...

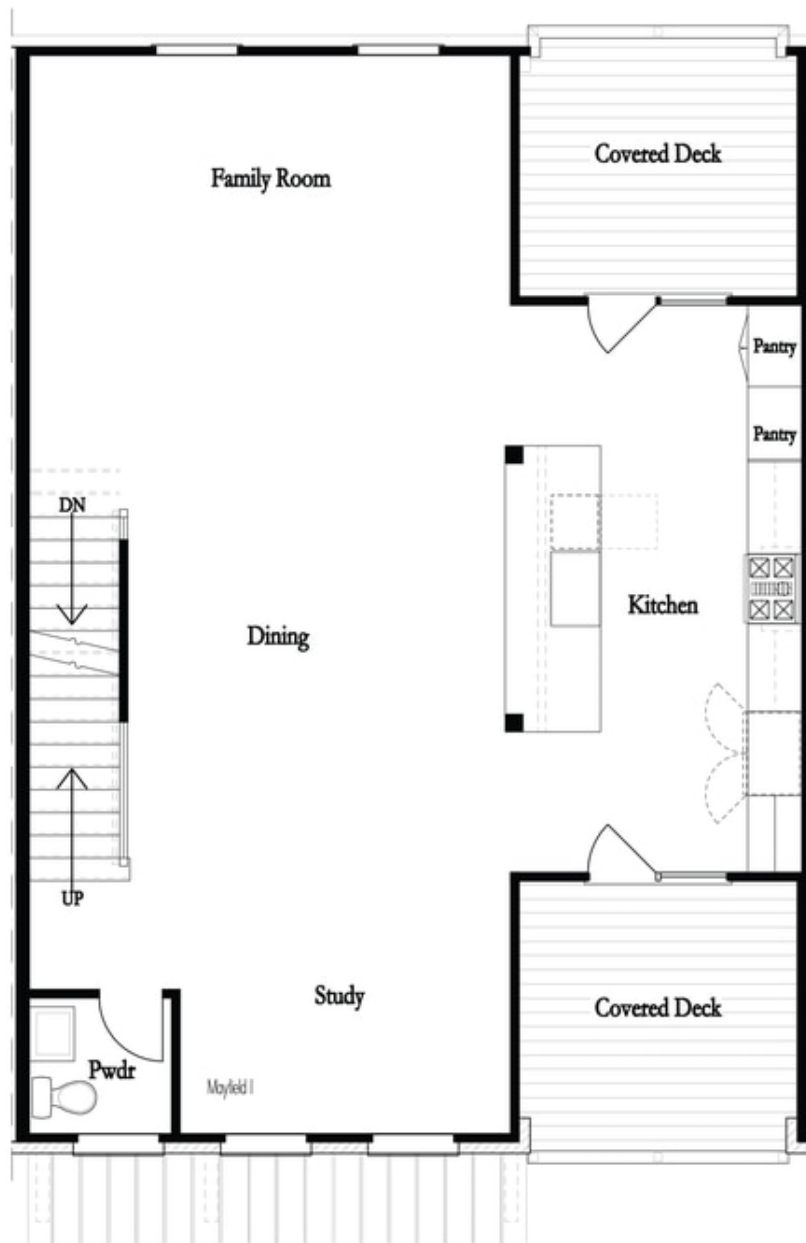
**Want to Know More
About This Home?**

CONTACT OUR COMMUNITY SALES MANAGER
Call Us @ 470.436.2641



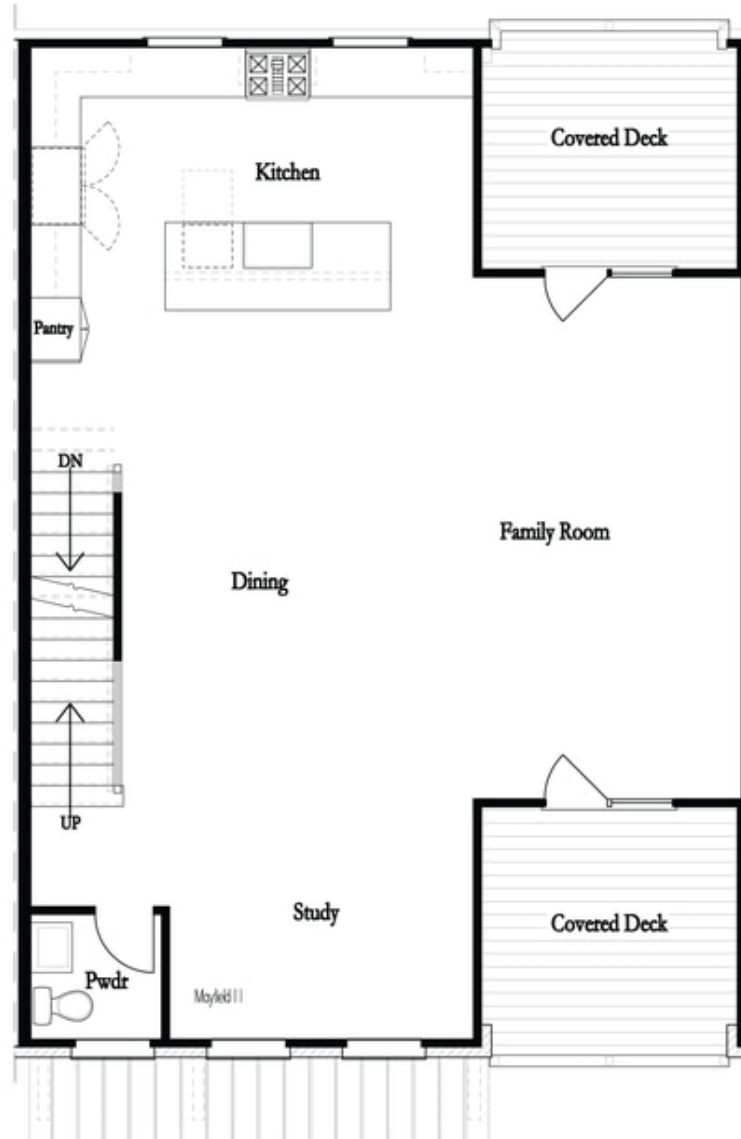
**Want to Know More
About This Home?**

CONTACT OUR COMMUNITY SALES MANAGER
Call Us @ 470.436.2641



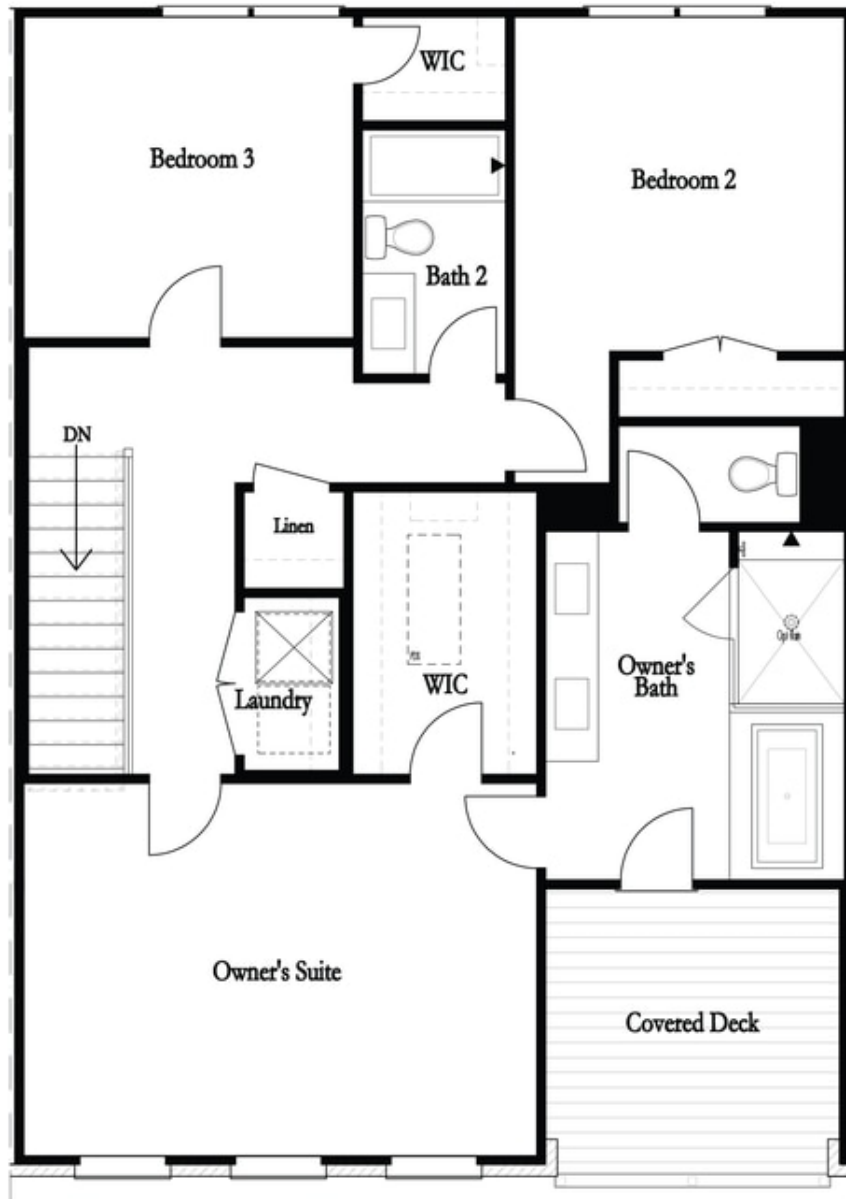
**Want to Know More
About This Home?**

CONTACT OUR COMMUNITY SALES MANAGER
Call Us @ 470.436.2641



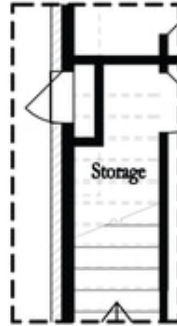
Want to Know More
About This Home?

CONTACT OUR COMMUNITY SALES MANAGER
Call Us @ 470.436.2641

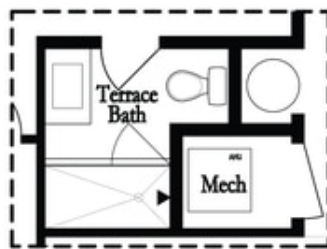


**Want to Know More
About This Home?**

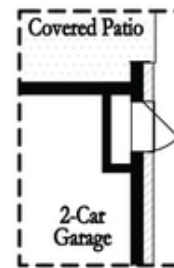
CONTACT OUR COMMUNITY SALES MANAGER
Call Us @ 470.436.2641



Opt Left Side Sprinkler Room



Deluxe Opt Shower Only

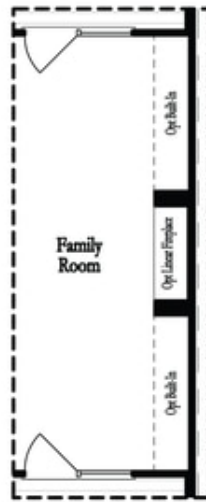


Opt Right Side Sprinkler Room

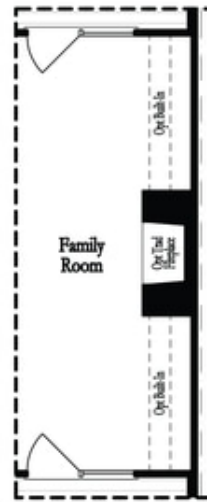
1st Flr Options

**Want to Know More
About This Home?**

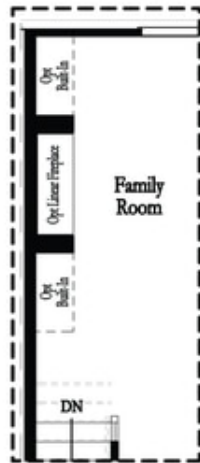
CONTACT OUR COMMUNITY SALES MANAGER
Call Us @ 470.436.2641



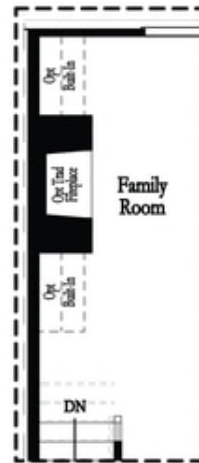
Deluxe Opt Linear Fireplace



Deluxe Opt Traditional Fireplace



Deluxe Opt Linear Fireplace

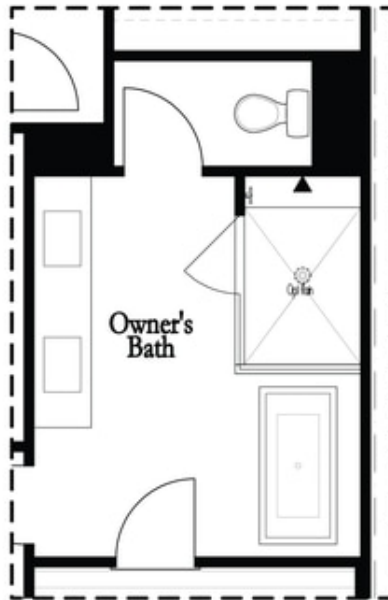


Deluxe Opt Traditional Fireplace

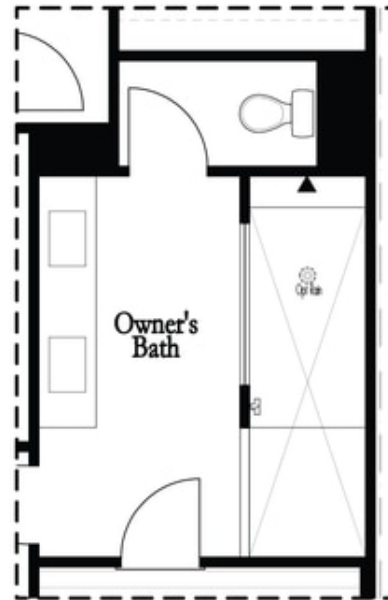
2nd Flr Options

**Want to Know More
 About This Home?**

CONTACT OUR COMMUNITY SALES MANAGER
 Call Us @ 470.436.2641



Deluxe Opt Shower/Free Standing Tub Combo



Deluxe Opt Walk-Through Shower

3rd Flr Options

**Want to Know More
About This Home?**

CONTACT OUR COMMUNITY SALES MANAGER
Call Us @ 470.436.2641