



PRICED AT
\$547,900

 1490 Sq Ft

 2 Beds

 2.0 Baths

 1 Car Garage

 2.0 Story

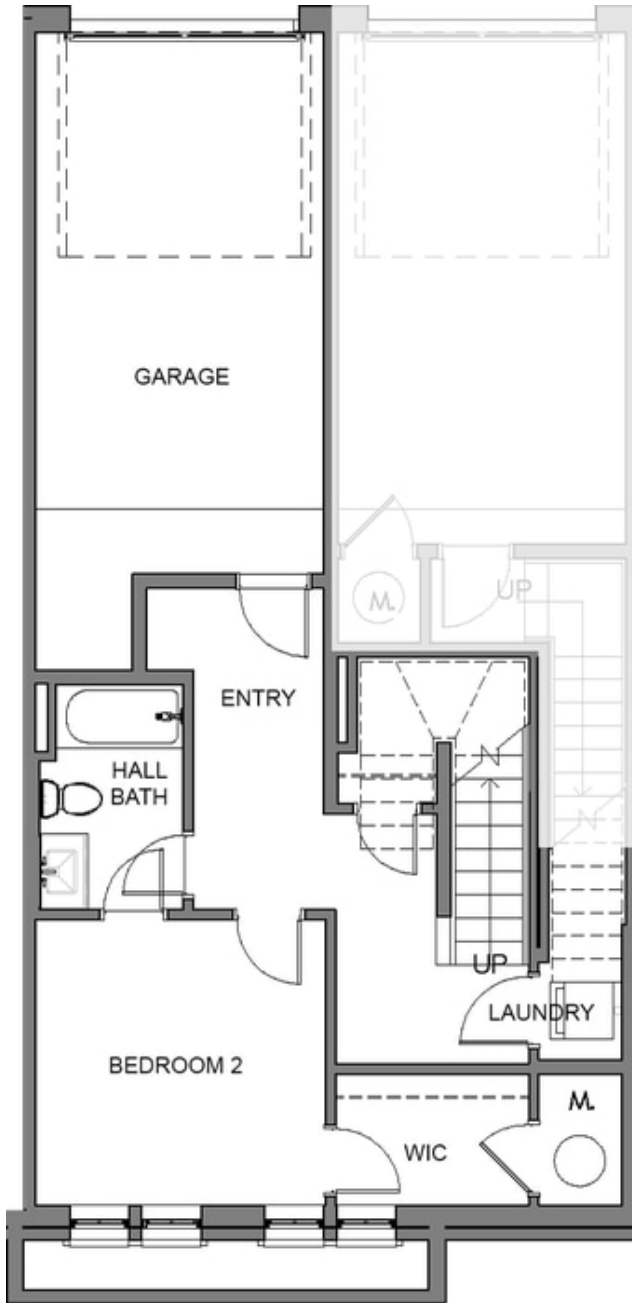
Elevate your life in 2023 with a new home by The Providence Group and \$5,000 towards closing cost! Hurry, final opportunities! *2022 OBIE AWARD WINNER FOR BEST MIXED USE COMMUNITY!* Tracking for an end of summer closing! Crawford Stacked Townhome by The Providence Group. This two story home features an open design, GE stainless appliances, quartz kitchen countertops, huge island for entertaining and tons of storage! 1 car attached garage with driveway for additional parking! Beautiful Gray II condo package features gorgeous white cabinets with soft close doors/drawers and oversized gray island! You will love this fresh design! Incredible mixed-use, live/work/play designed community! Steps from The Maxwell Retail Featuring delicious food at Rena's Italian Fishery, Be entertained at Fairway Social, Yummy treats at July Moon also steps from the new Starbuck's and Shake Shack, on the Alpha Loop and only 2 blocks from Downtown Alpharetta! You cannot beat the location! Amazing Maxwell amenities include pool, cabana & bocce ball! Photos shown are representative of the floorplan but are not photos of the actual home. Building Under Construction. Condo ownership. \$5,000 towards Closing Costs/Financing with our 4 preferred Lenders! Office located at Atley Community. Come live life Elevated with The Providence ...

**Want to Know More
About This Home?**

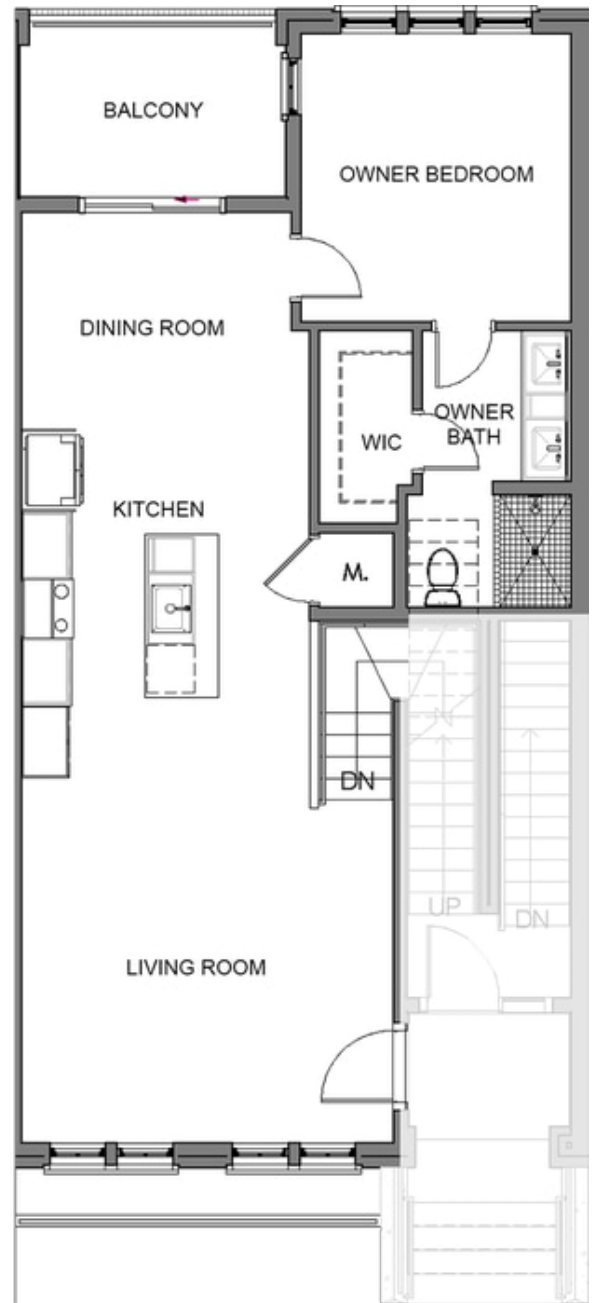
CONTACT OUR NEW HOME NAVIGATOR

NONE

Call Us @ 678.372.1644



Level 1



Level 2

**Want to Know More
About This Home?**

CONTACT OUR NEW HOME NAVIGATOR

NONE

Call Us @ 678.372.1644