



PRICED AT
\$542,900

 1490 Sq Ft

 2 Beds

 2.0 Baths

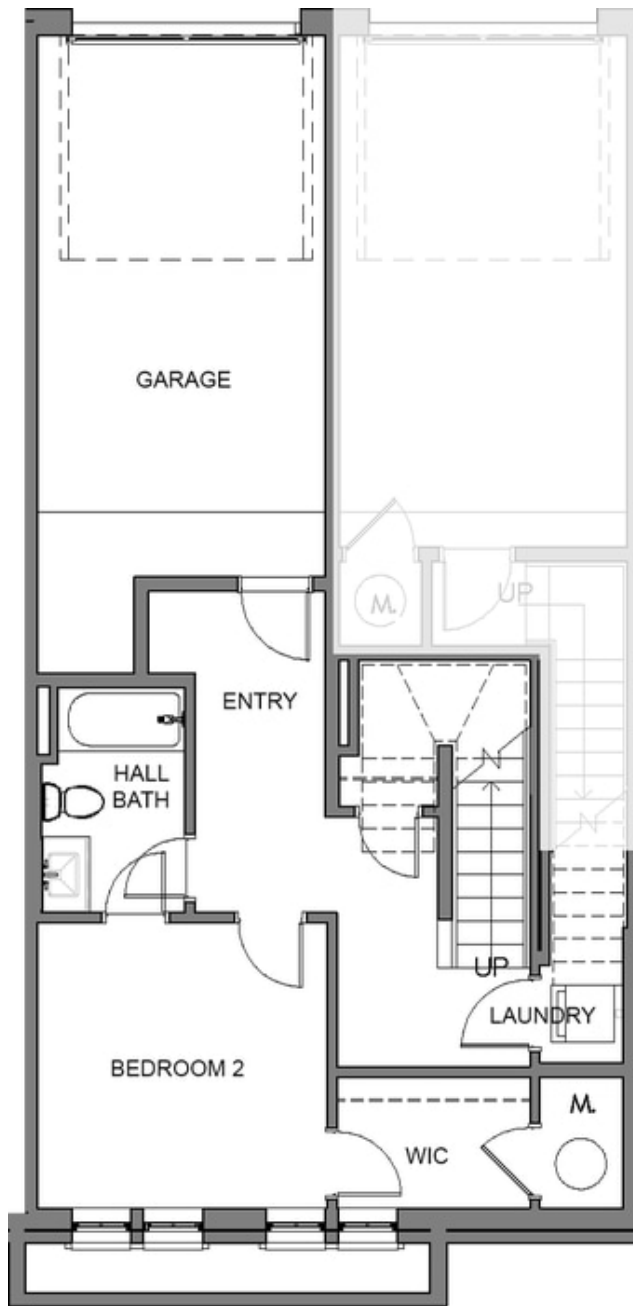
 1 Car Garage

 2.0 Story

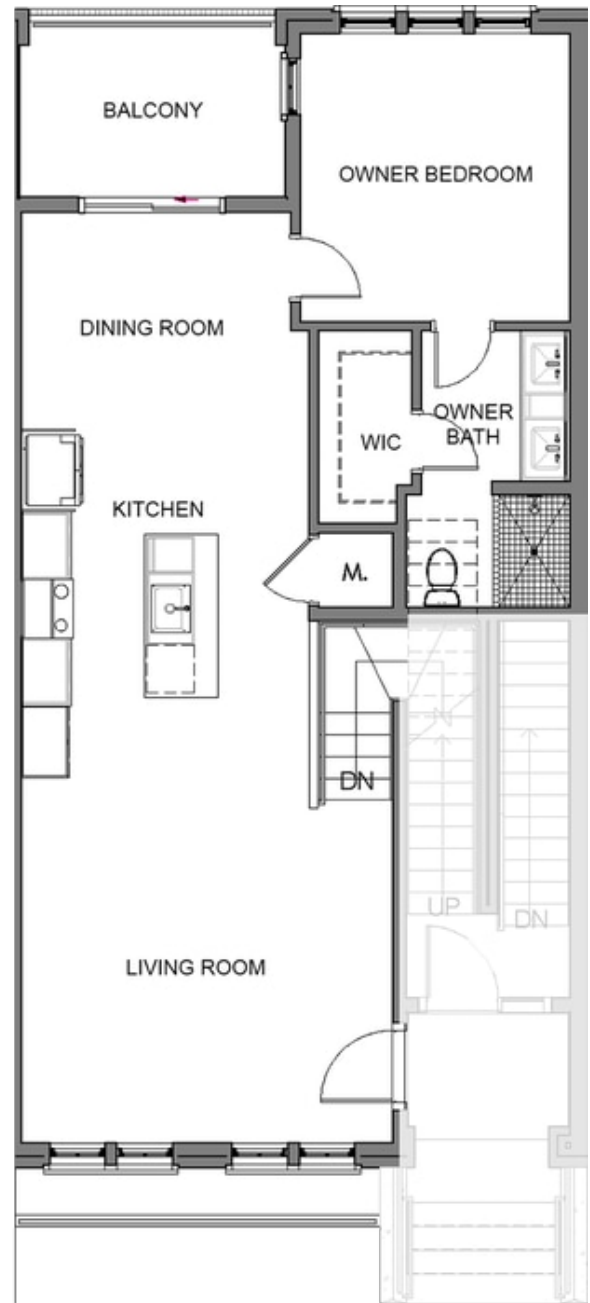
Elevate your life in 2023 with a new home by The Providence Group and \$5,000 towards closing cost! Final Opportunities! Only 4 Crawford's remain!! Incredible mixed-use, live/work/play designed community! Steps from The Maxwell Retail featuring delicious restaurants like Rena's Italian Fishery, July Moon, and be entertained at Fairway Social! Right on the Alpha Loop and only 1/2 mile from the Alpha Square! Amazing location! This two story home features an open design with huge windows to let in a ton of natural light, GE stainless steel appliances, gorgeous quartz kitchen countertops, huge island for entertaining and tons of storage! 1 car attached garage with driveway for additional parking! The Maxwell features beautiful amenities with a Swimming pool, cabana, firepit & bocce ball! \$5000 closing costs incentive when using one of our 4 preferred lenders. Photos shown are representative of the floorplan but are not photos of the actual home. Home Under Construction! HOA maintained landscaping and exterior! Move in end of summer. Live life Elevated with The Providence Group! Sales office now located in our Atley Community.

**Want to Know More
About This Home?**

CONTACT OUR COMMUNITY SALES MANAGER
Call Us @ 470.436.2641



Level 1



Level 2

**Want to Know More
 About This Home?**

CONTACT OUR COMMUNITY SALES MANAGER
 Call Us @ 470.436.2641