



PRICED AT
\$909,900

 2515 Sq Ft

 4 Beds

 3.5 Baths

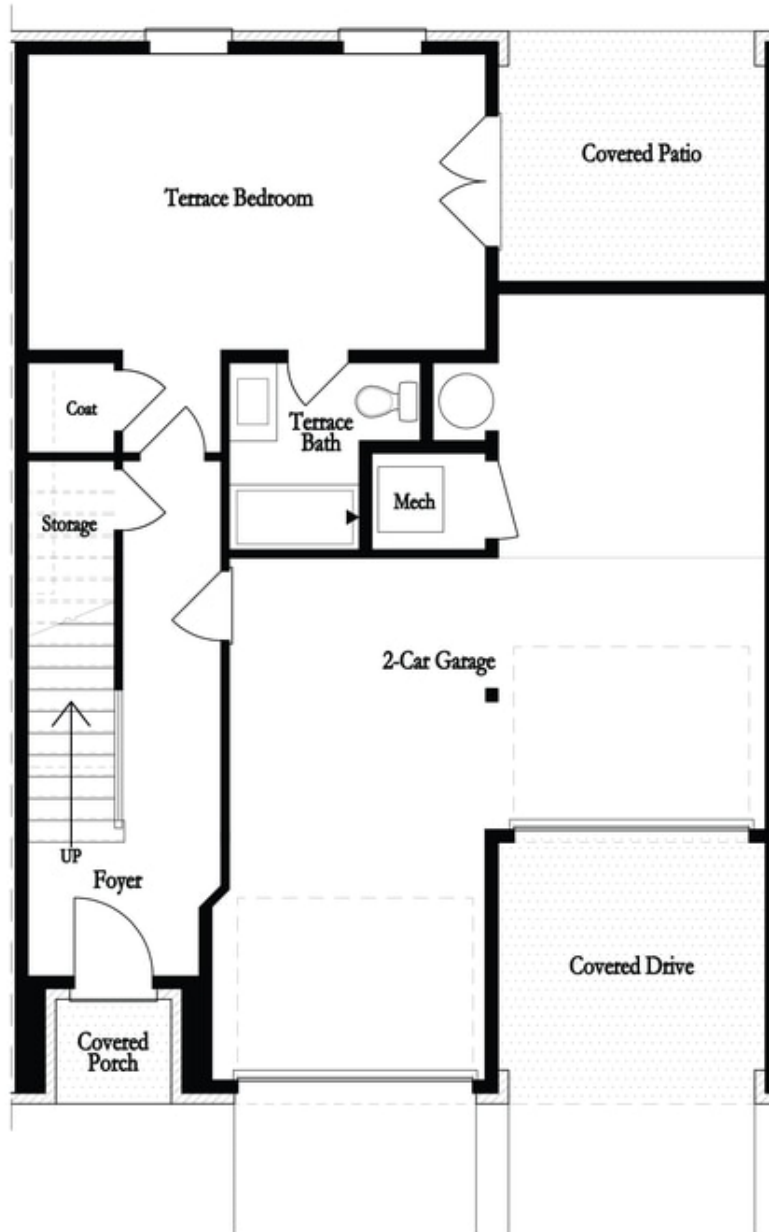
 2 Car Garage

 3.0 Story

MOVE IN READY!! Elevate your life in 2023! SPRING INTO SAVINGS WITH \$10,000 TOWARDS CLOSING COSTS WITH PREFERRED LENDERS for contract written by April 30, 2023! Final opportunities!! *2022 OBIE WINNER FOR BEST MIXED USE COMMUNITY!* The Providence Groups Townhouse-Mayfield II. Gorgeous Brownstone Collection! Amazing mixed-use development, live/work/play Community in the heart of Alpharetta! Just steps away from Maxwell retail, featuring Rena's Italian Fishery, July Moon, City Eats Kitchen and Lyly's sushi just to name a few! Also on Alpha loop and ~ 2 blocks from Alpharetta Square. Stunning Townhome features 4 Bedroom/3.5 Bath with amazing Open Concept. The first floor has an roomy bedroom with private bath and a serene covered porch. Gated backyard perfect for your fur babies. Main floor is an entertainers dream! Beautiful Chef's Kitchen with Cambria countertops island overlooking massive family room! This wonderful home also has a study on this level perfect for a home office. If your looking for outdoor space look no further! This home has 2 covered decks on the front and rear and off the owners suite. Expansive Owners bedroom features elegant en suite with gorgeous free-standing tub and oversized shower. Come check out Maxwell amenities, they include Pool, Cabana, ...

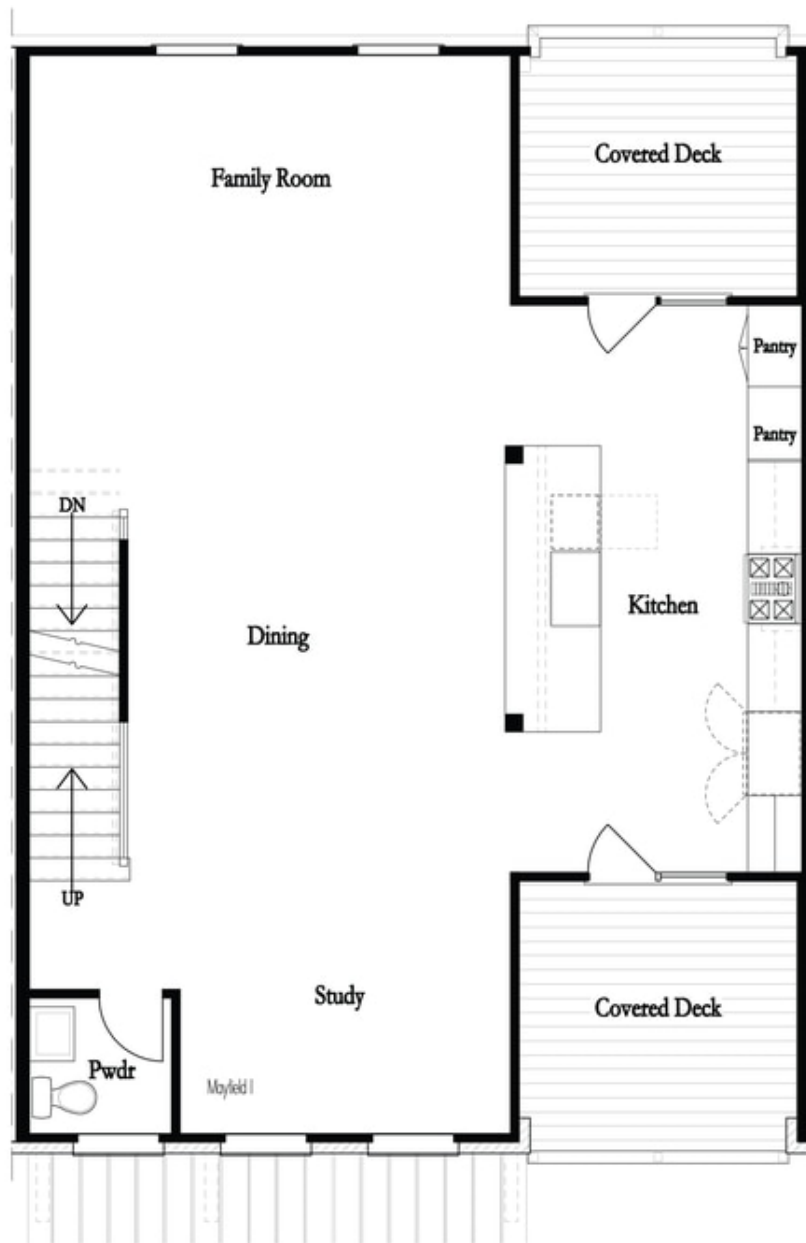
**Want to Know More
About This Home?**

CONTACT OUR COMMUNITY SALES MANAGER
Call Us @ 470.436.2641



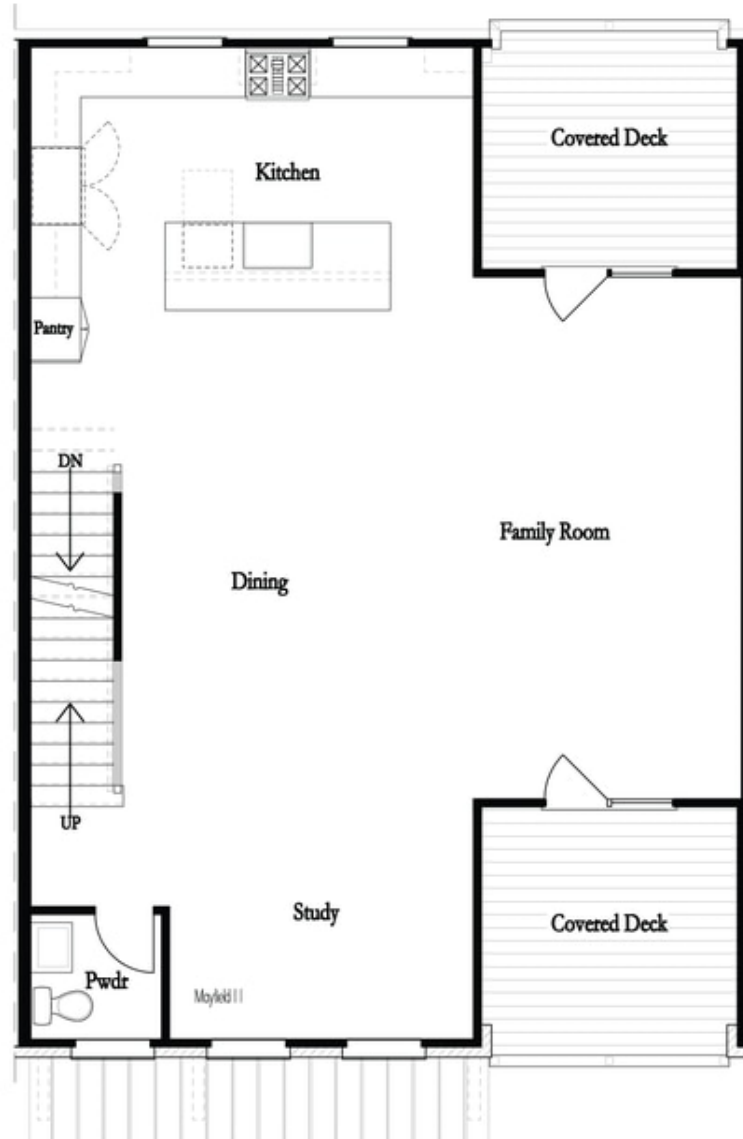
**Want to Know More
About This Home?**

CONTACT OUR COMMUNITY SALES MANAGER
Call Us @ 470.436.2641



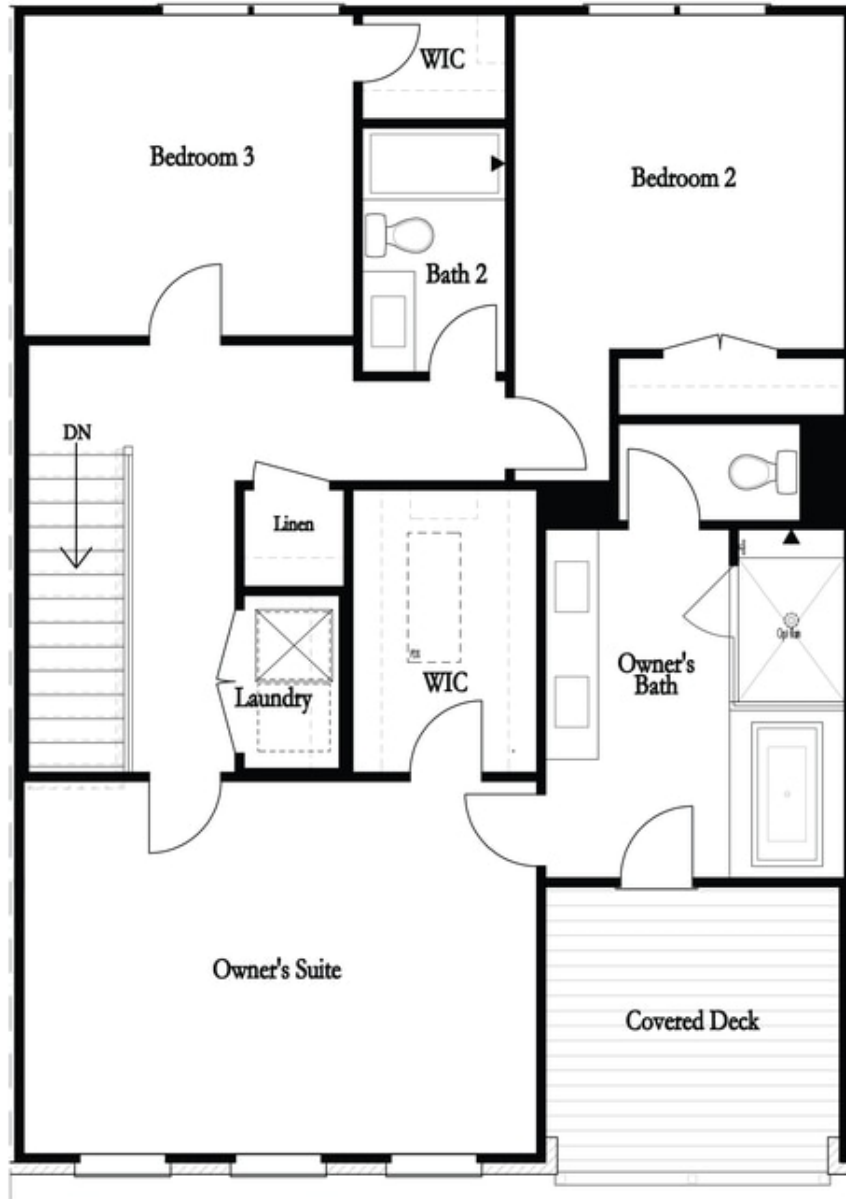
**Want to Know More
About This Home?**

CONTACT OUR COMMUNITY SALES MANAGER
Call Us @ 470.436.2641



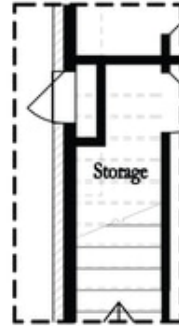
Want to Know More
About This Home?

CONTACT OUR COMMUNITY SALES MANAGER
Call Us @ 470.436.2641

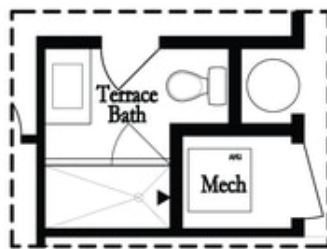


**Want to Know More
About This Home?**

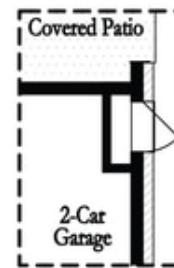
CONTACT OUR COMMUNITY SALES MANAGER
Call Us @ 470.436.2641



Opt Left Side Sprinkler Room



Deluxe Opt Shower Only

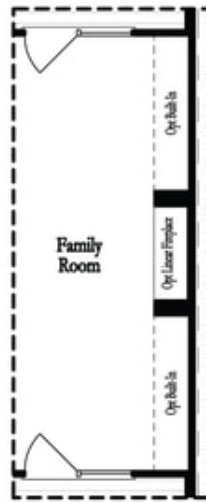


Opt Right Side Sprinkler Room

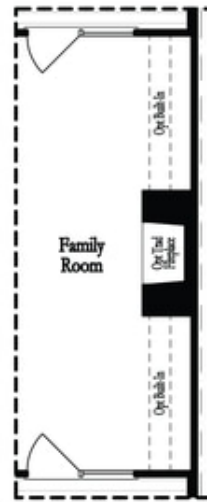
1st Flr Options

**Want to Know More
About This Home?**

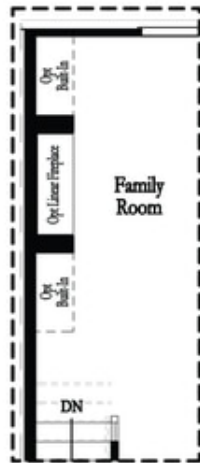
CONTACT OUR COMMUNITY SALES MANAGER
Call Us @ 470.436.2641



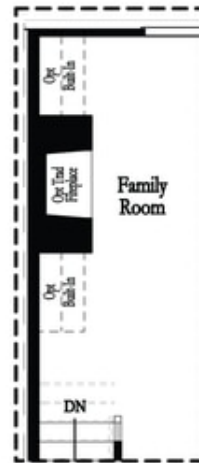
Deluxe Opt Linear Fireplace



Deluxe Opt Traditional Fireplace



Deluxe Opt Linear Fireplace

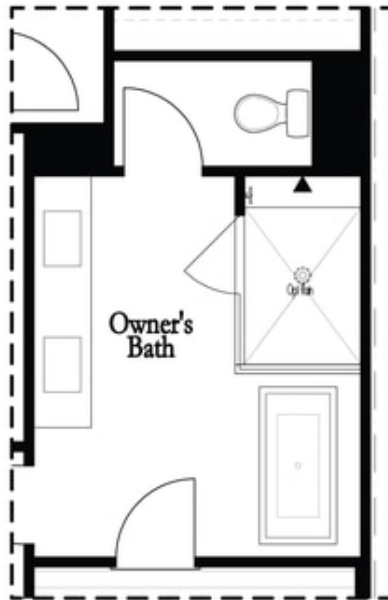


Deluxe Opt Traditional Fireplace

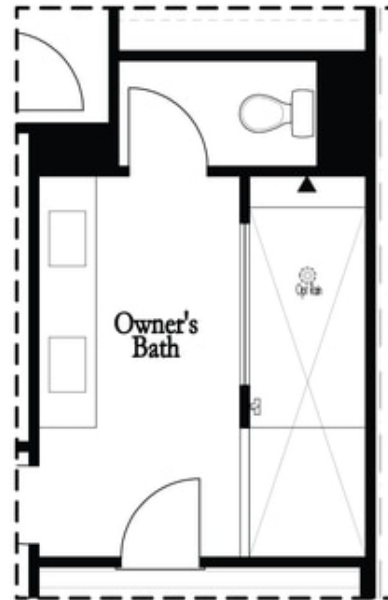
2nd Flr Options

**Want to Know More
 About This Home?**

CONTACT OUR COMMUNITY SALES MANAGER
 Call Us @ 470.436.2641



Deluxe Opt Shower/Free Standing Tub Combo



Deluxe Opt Walk-Through Shower

3rd Flr Options

**Want to Know More
About This Home?**

CONTACT OUR COMMUNITY SALES MANAGER
Call Us @ 470.436.2641