



PRICED AT  
**\$890,665**

 2515 Sq Ft

 4 Beds

 3.5 Baths

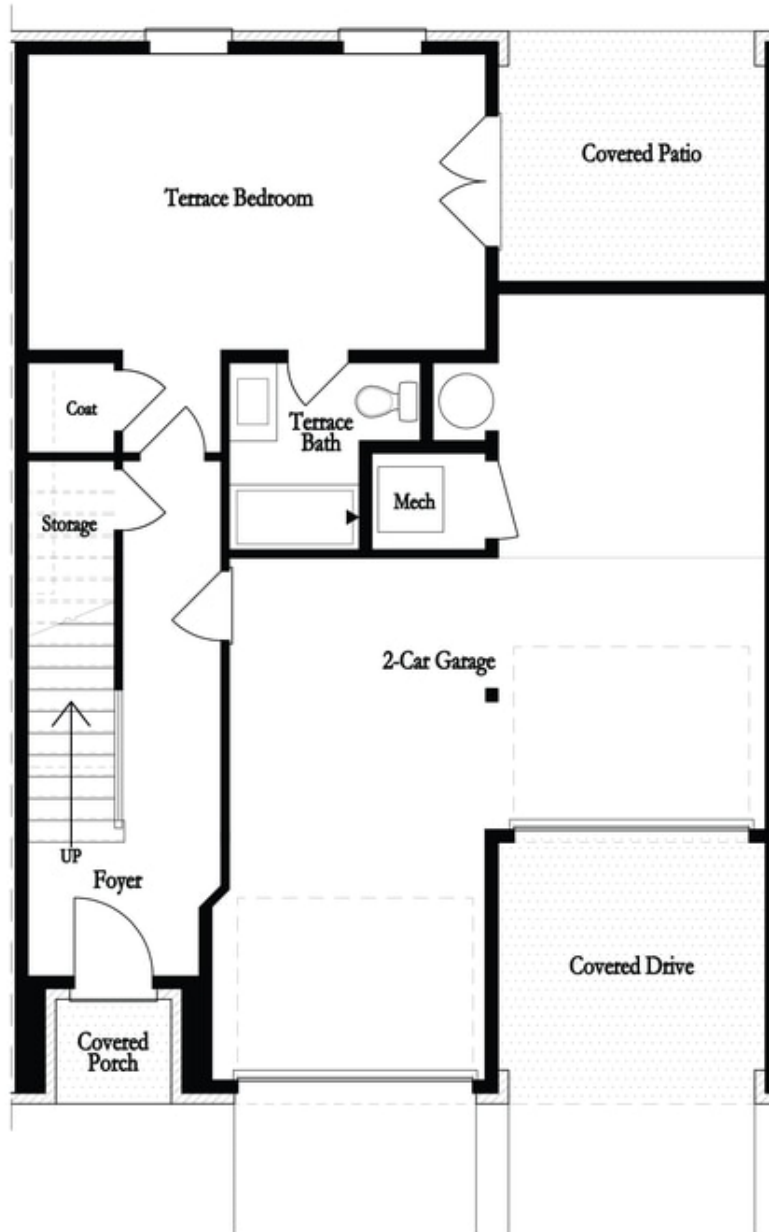
 2 Car Garage

 3.0 Story

**ASK ABOUT OUR FABULOUS FALL INCENTIVES! AVAILABLE TO CLOSE IN 2022!!!!** The Providence Groups Newest Townhouse-Mayfield I. Gorgeous Brownstone Collection! Final Opportunities! Only a few Townhomes left! End of Summer Sales Event!! \$20,000 towards Closing costs with preferred lenders and half off Builder Deposit! Amazing mixed-use development, live/work/play Community in the heart of Alpharetta! Just steps away from Maxwell retail featuring Rena's Italian Fishery, July moon and Fairway Social. Steps away from Starbuck's and Shake Shack! On the Alpha loop and 1/2 mile from Alpharetta Square. 4 Bedroom/3.5 Bath Open Concept Townhome, this townhome lives more like a single family detached with the open floor plan. You will love this Spacious main floor, it boasts Beautiful White Stacked Cabinets, slate Island, Cambria Quartz counter tops. GE café appliances, roomy family room with study, includes 3 covered decks, Covered porch and fenced in Backyard!! Expansive Owners bedroom features elegant en suite with free-standing tub and shower and private covered deck. Community Features: Pool, Cabana, Bocce Ball, Firepit, Alpha loop and Maxwell Retail. Home is under construction. Pictures for information only. Estimated Completion Nov/Dec 2022. Come live life Elevated With The Providence Group! Our Sales Office now located at Atley Community.

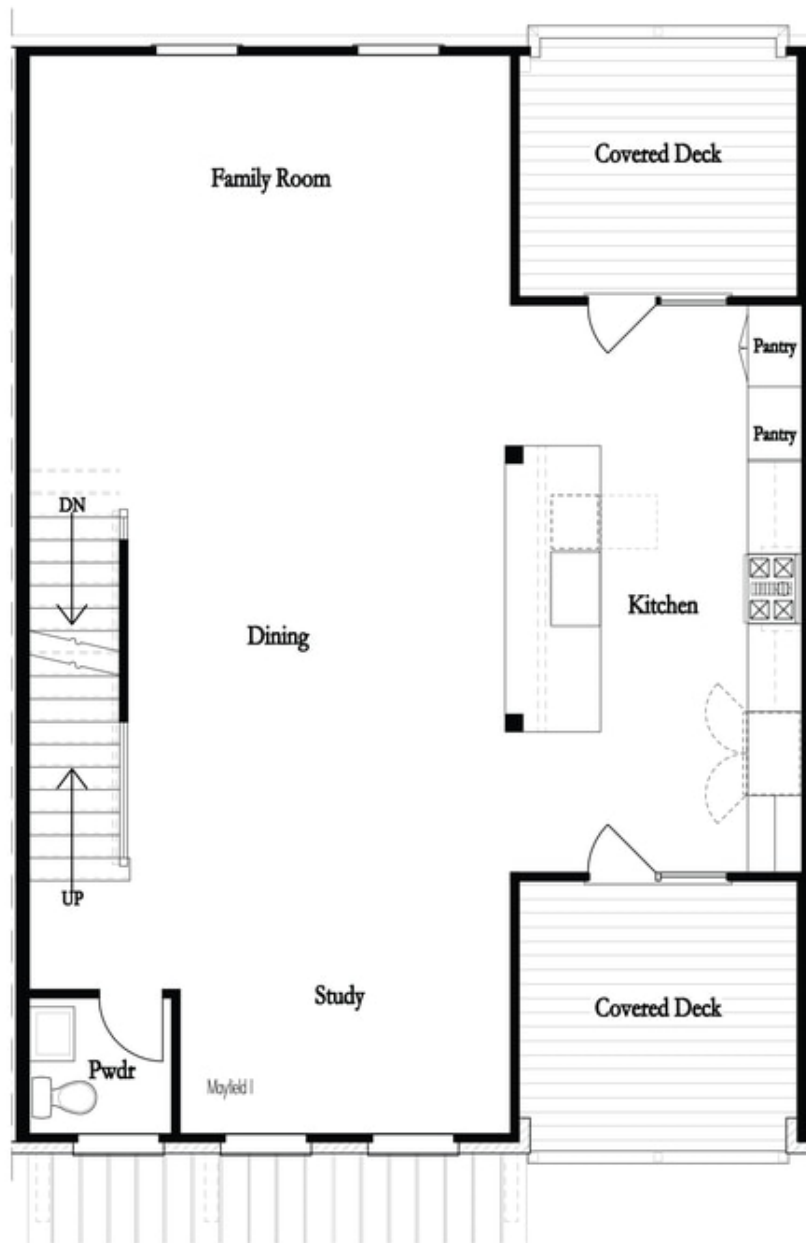
**Want to Know More  
About This Home?**

CONTACT OUR COMMUNITY SALES MANAGER  
Call Us @ 470.436.2641



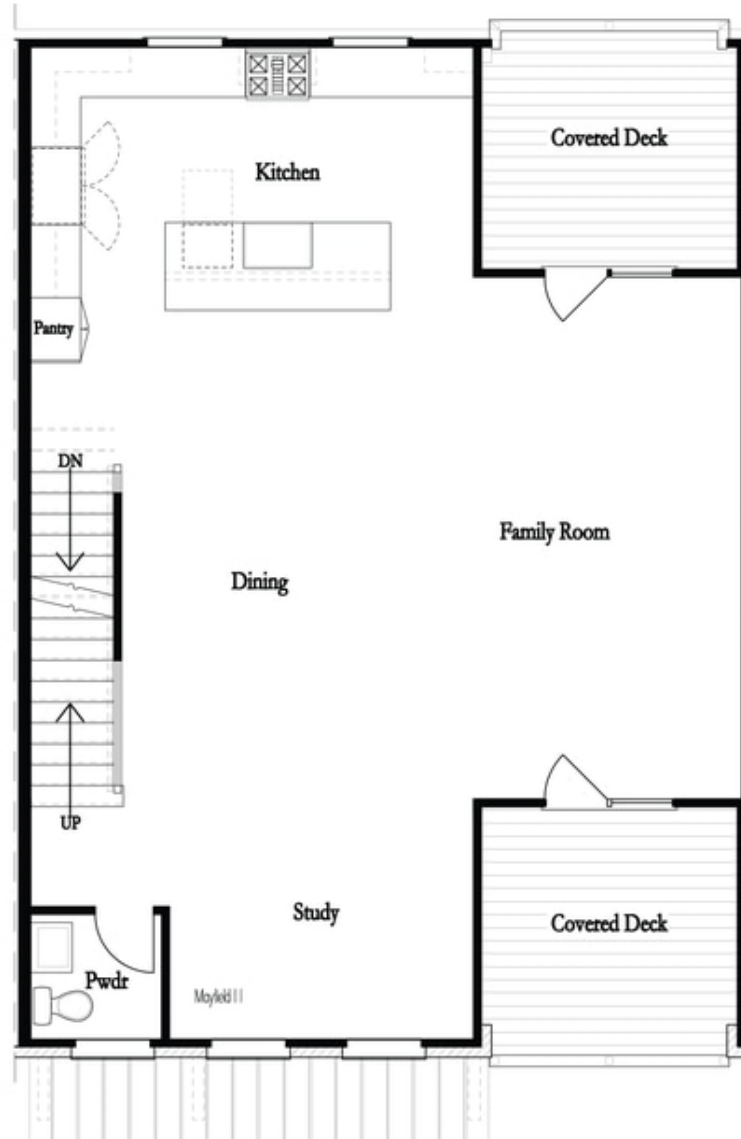
**Want to Know More  
About This Home?**

CONTACT OUR COMMUNITY SALES MANAGER  
Call Us @ 470.436.2641



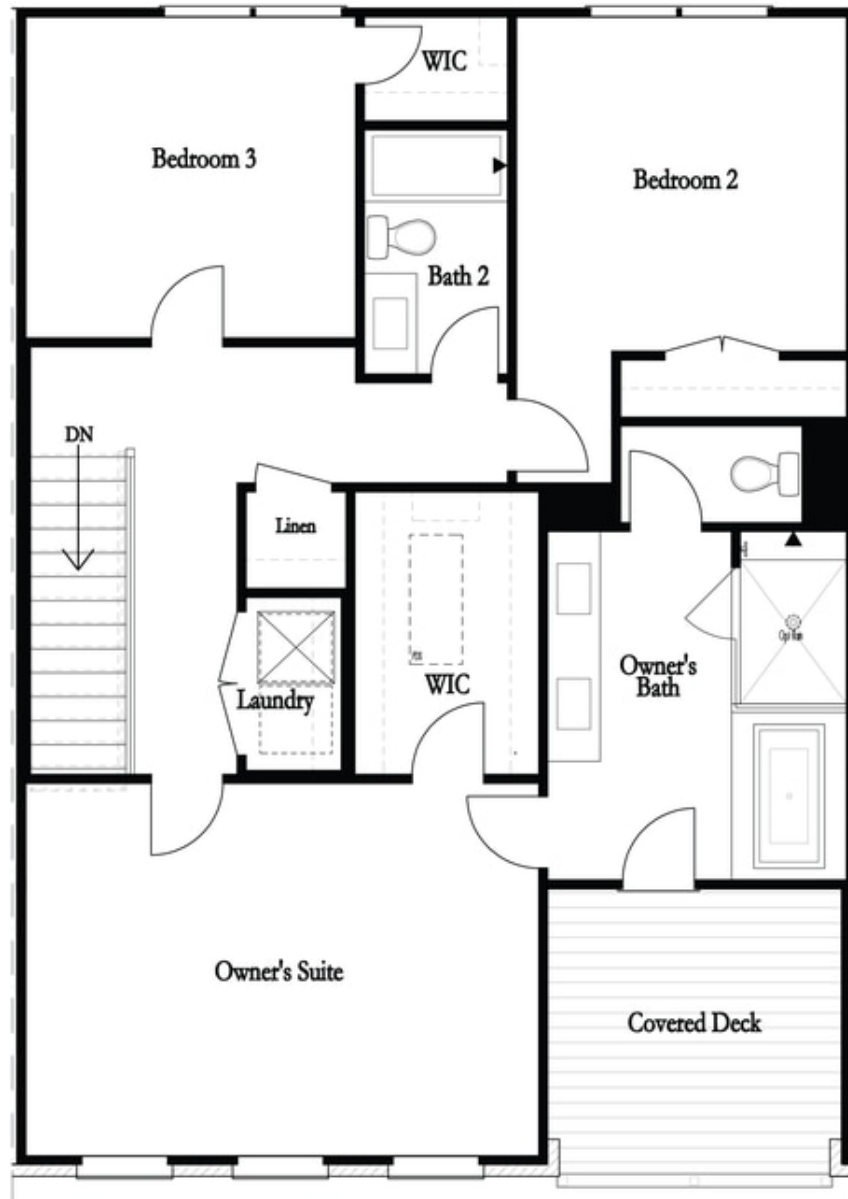
**Want to Know More  
About This Home?**

CONTACT OUR COMMUNITY SALES MANAGER  
Call Us @ 470.436.2641



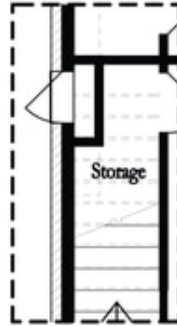
Want to Know More  
About This Home?

CONTACT OUR COMMUNITY SALES MANAGER  
Call Us @ 470.436.2641

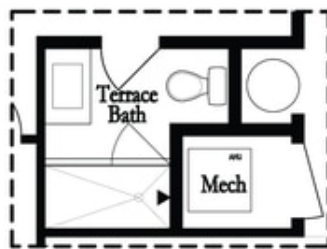


**Want to Know More  
About This Home?**

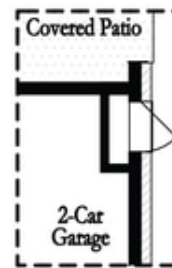
CONTACT OUR COMMUNITY SALES MANAGER  
Call Us @ 470.436.2641



Opt Left Side Sprinkler Room



Deluxe Opt Shower Only

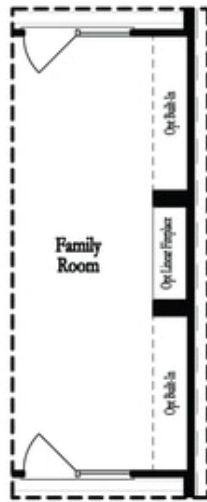


Opt Right Side Sprinkler Room

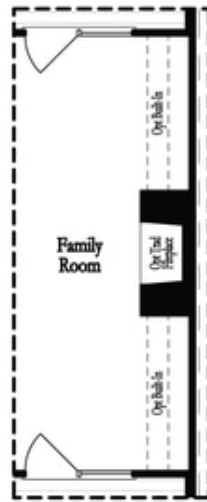
## 1st Flr Options

**Want to Know More  
About This Home?**

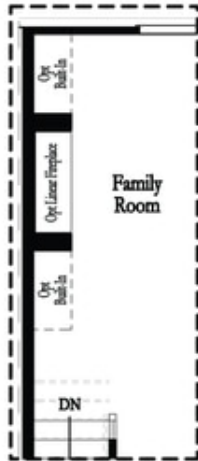
CONTACT OUR COMMUNITY SALES MANAGER  
Call Us @ 470.436.2641



Deluxe Opt Linear Fireplace



Deluxe Opt Traditional Fireplace



Deluxe Opt Linear Fireplace

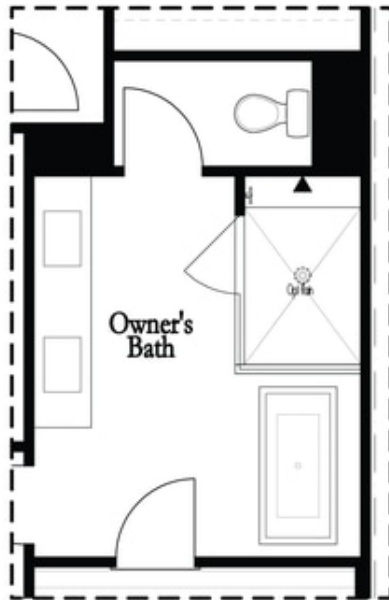


Deluxe Opt Traditional Fireplace

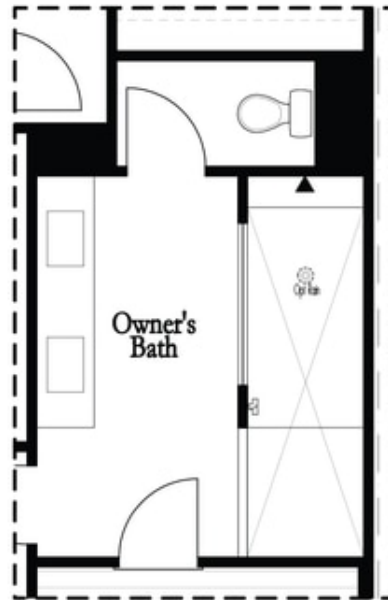
## 2nd Flr Options

**Want to Know More  
 About This Home?**

CONTACT OUR COMMUNITY SALES MANAGER  
 Call Us @ 470.436.2641



Deluxe Opt Shower/Free Standing Tub Combo



Deluxe Opt Walk-Through Shower

## 3rd Flr Options

**Want to Know More  
About This Home?**

CONTACT OUR COMMUNITY SALES MANAGER  
Call Us @ 470.436.2641