



PRICED AT
\$722,260

 2228 Sq Ft

 4 Beds

 3.5 Baths

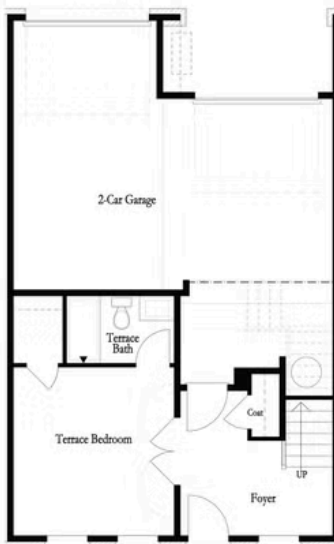
 2 Car Garage

 3.0 Story

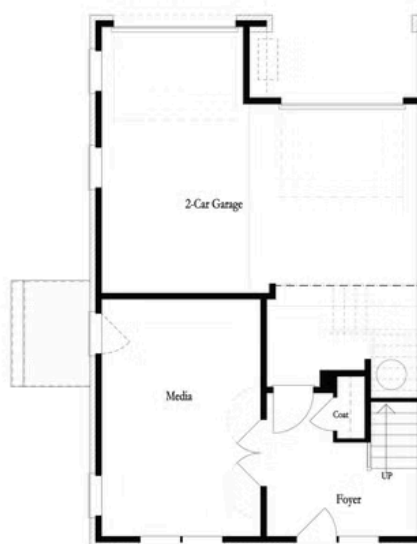
The Meyers by The Providence Group! Join the New Beautifully designed community in Downtown Alpharetta with its own fabulous Restaurants, Rena's Italian Fishery, Ponko Chicken, Lily's sushi and Fairway Social at The Maxwell. Short walk to Alpha City Center and Avalon, on Alpha Loop. Open Concept floor plan with 10ft ceilings on main. Enormous Dining area perfect for you hosting events. Kitchen features stacked white cabinets and island with Cambria counter tops, Overlooks family room with white painted brick wall surrounding the fireplace. KitchenAid stainless steel appliances with 36" cooktop, micro-oven combo. Spa like Owner's suite with his/her vanities, oversized shower and closet. Bedroom on main level could be the perfect home office with walk-in-closet and full bath! Gated front courtyard! Closing timeline April/May 2022. \$5k in Closing Costs with Green Brick Mortgage. Come make Space for Life with The Providence Group!

**Want to Know More
About This Home?**

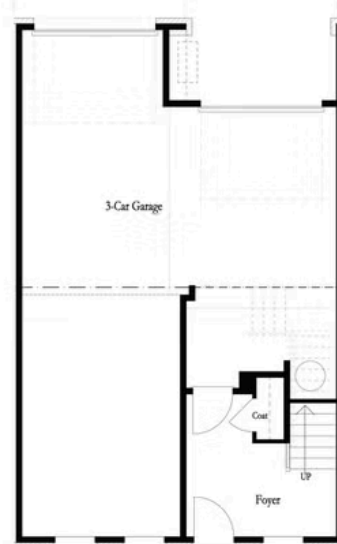
CONTACT OUR COMMUNITY SALES MANAGER
Call Us @ 470.436.2641



First Floor (Bedroom)



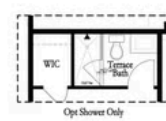
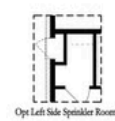
First Floor (Media)



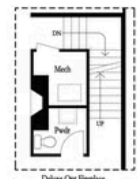
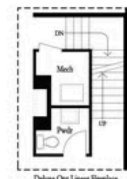
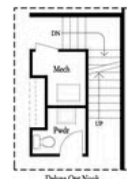
First Floor (3 Car Garage)

Want to Know More
About This Home?

CONTACT OUR COMMUNITY SALES MANAGER
Call Us @ 470.436.2641



First Floor Options



Second Floor Options

Want to Know More
About This Home?

CONTACT OUR COMMUNITY SALES MANAGER
Call Us @ 470.436.2641