

PRICED AT  
**\$658,275**

 2228 Sq Ft

 4 Beds

 3.5 Baths

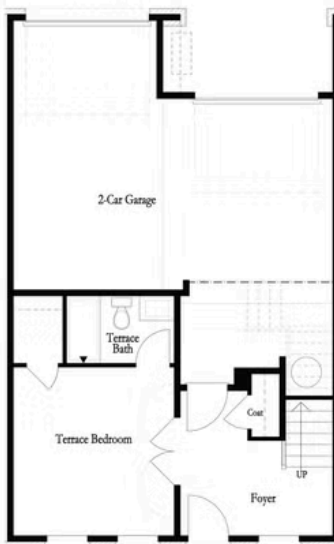
 2 Car Garage

 3.0 Story

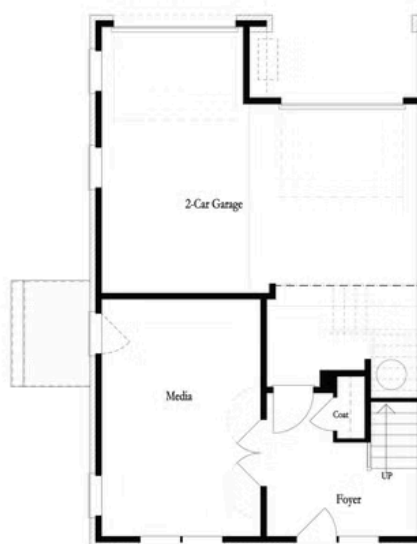
The Meyers by The Providence Group! Join the New Beautifully designed community in Downtown Alpharetta with its own fabulous Restaurants at The Maxwell. Short walk to Alpha City Center and Avalon. Open Concept floor plan with 10ft ceilings on main. Enormous Dining area perfect for you hosting events. Large Kitchen and island with quartz counter tops, Overlooks family room w/fireplace. Spa like Owner's suite with his/her vanities, oversized shower and closet. Bedroom on main level could be the perfect home office! Gated front courtyard! Hurry to design this beauty and call it home! Amenities include pool, cabana, bocce ball, large firepit and direct access to Alpha Loop. Please note picture is for information only. Home is Under Construction. Home to be ready Dec 21/Jan 22. \$5,000 Toward Closing Costs with Preferred Lender.

**Want to Know More  
About This Home?**

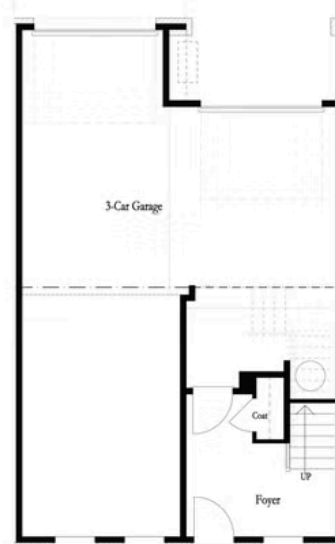
CONTACT OUR COMMUNITY SALES MANAGER  
Call Us @ 470.436.2641



First Floor (Bedroom)



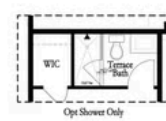
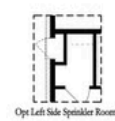
First Floor (Media)



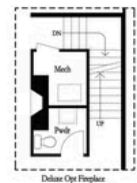
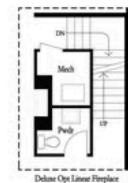
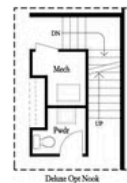
First Floor (3 Car Garage)

Want to Know More  
About This Home?

CONTACT OUR COMMUNITY SALES MANAGER  
Call Us @ 470.436.2641



First Floor Options



Second Floor Options

Want to Know More  
About This Home?

CONTACT OUR COMMUNITY SALES MANAGER  
Call Us @ 470.436.2641