



PRICED AT  
**\$534,900**

 1490 Sq Ft

 2 Beds

 2.0 Baths

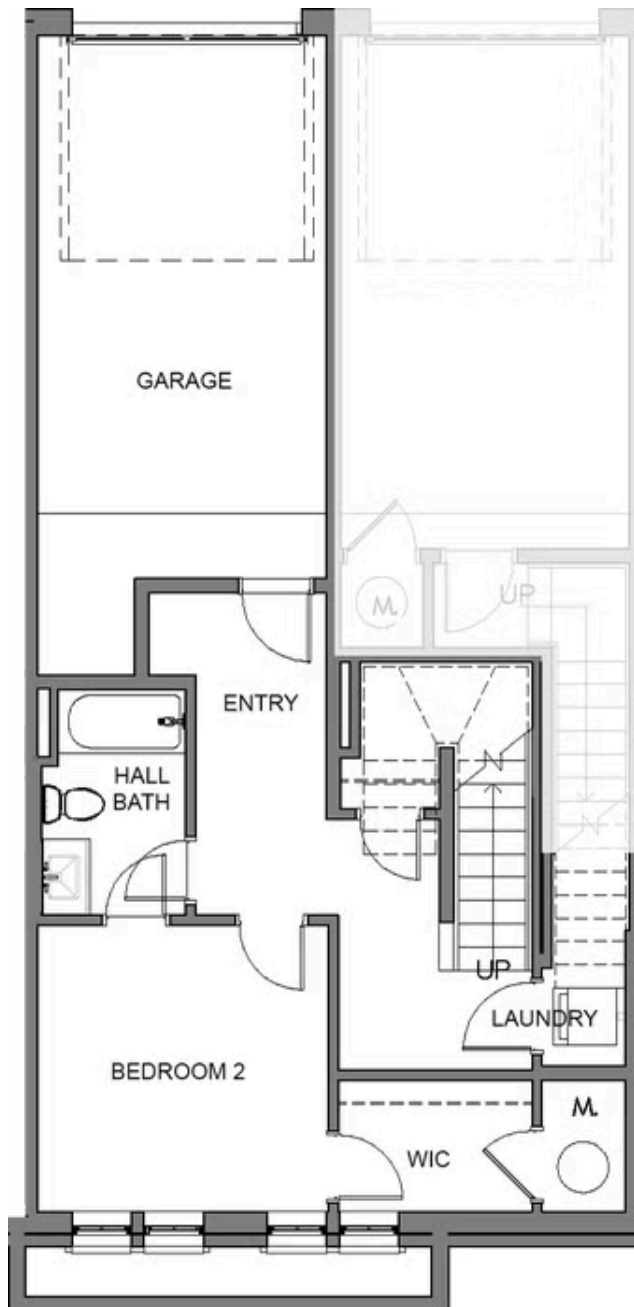
 1 Car Garage

 2.0 Story

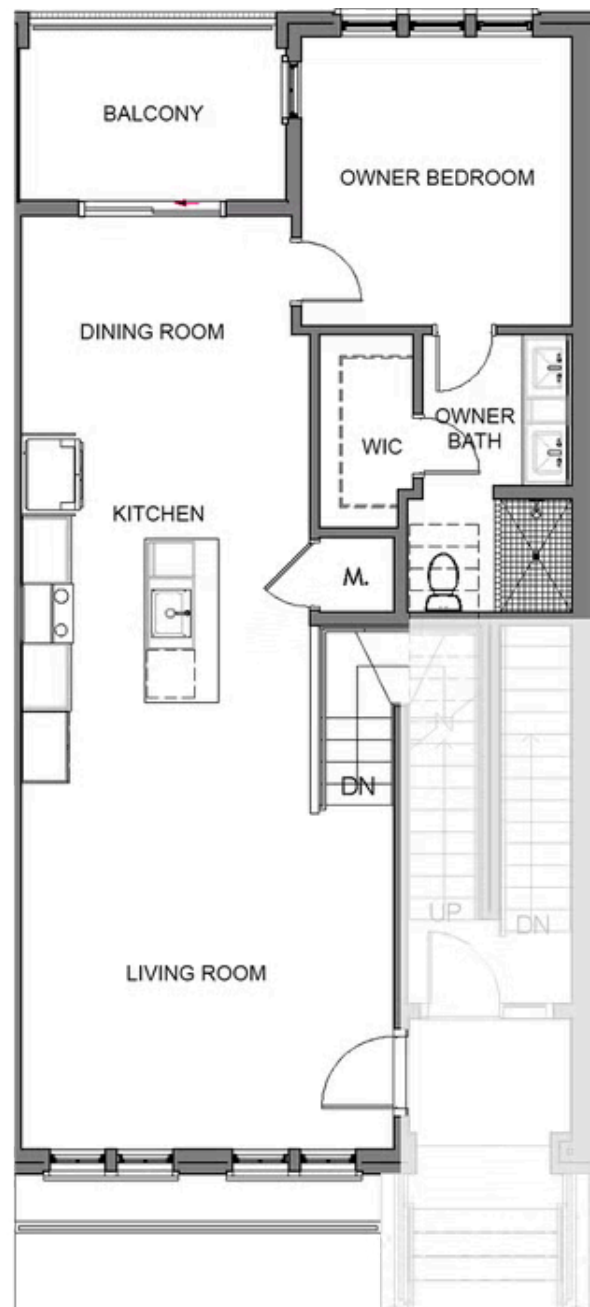
End Unit! Crawford Stacked Townhome by The Providence Group. Fall in love with the popular Crawford model in a wonderfully designed community where luxury meets lifestyle! First two floors in our new building just a short walk away from the newest place to be entertained at Fairway Social, go shopping & enjoy delicious food Lily's sushi, Rena's Italian Fishery, City Eats and July Moon all located in The Maxwell Retail. Condo will feature upscale GE stainless appliances, quartz counters, oversized island & large covered deck. Beautiful Grey design package! Under Construction, est. completion Jan/Feb 23. Maxwell features pool, cabana, firepit & Bocce Ball! Access to Alpha Loop, pocket parks, HOA maintained landscape in the heart of Downtown Alpharetta. Walkable to City Center/quickly get to Avalon & 400N/S. 1-2-8 Warranty. Condo Ownership. Not actual Building. Photos for information only.

**Want to Know More  
About This Home?**

CONTACT OUR COMMUNITY SALES MANAGER  
Call Us @ 470.436.2641



Level 1



Level 2

**Want to Know More  
About This Home?**

CONTACT OUR COMMUNITY SALES MANAGER  
Call Us @ 470.436.2641