



PRICED AT
\$800,440



2515 Sq Ft



4 Beds



3.5 Baths



2 Car Garage

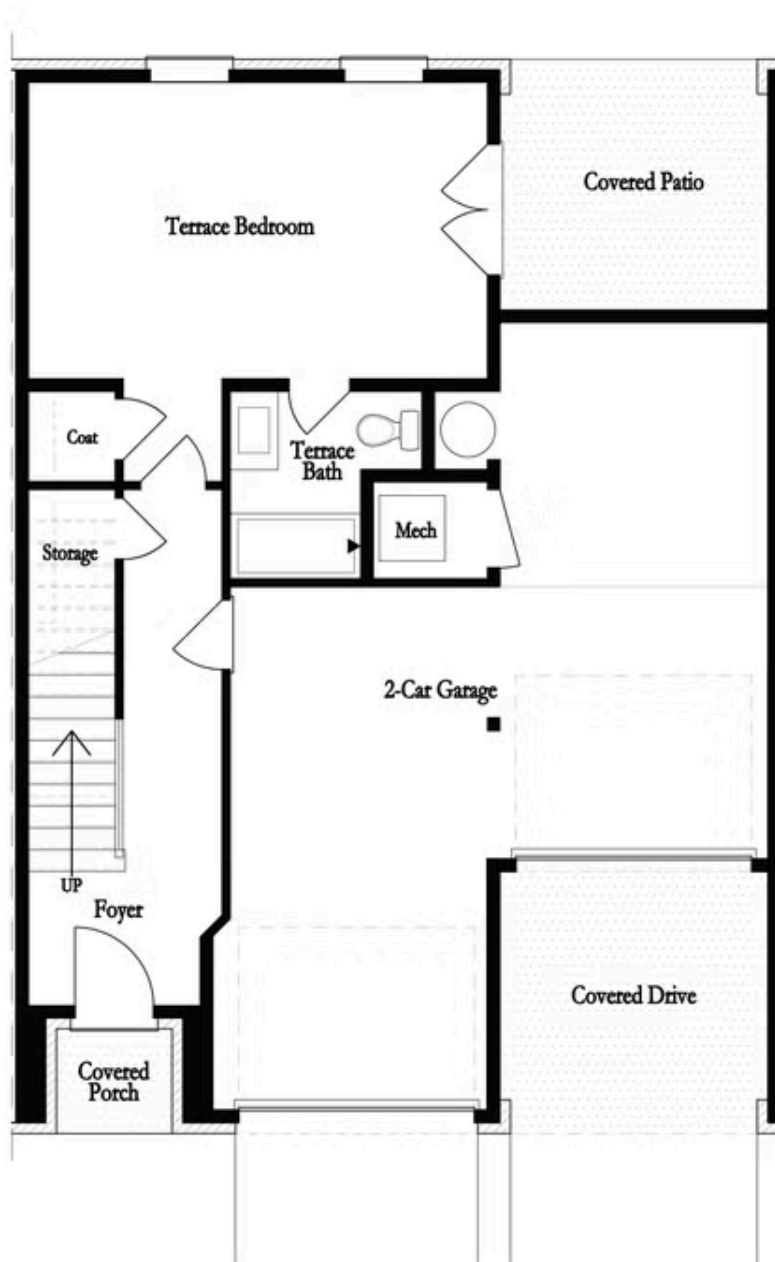


3.0 Story

The Providence Groups Newest Townhouse-Mayfield II. Gorgeous Brownstone Collection! Amazing mixed-use development, live/work/play Community in the heart of Alpharetta! Just steps away from Maxwell retail, on Alpha loop and 1/2 mile from Alpharetta Square. 4 Bd/3.5 Bath Open Concept Townhome, main floor boasts Beautiful Chef's Kitchen w/large island overlooking roomy family room with study, including to 3 covered decks, covered porch and backyard! Expansive Owners bedroom features elegant ensuite & covered porch. Community Features: Pool, Cabana, Bocce Ball, Firepit, Alpha loop and Maxwell Retail (Features Fairway Social, Poncho Chicken, Lily's Sushi and BodyBar). In early construction phase, come chose your personal touches and Make Space for Life! \$5k in Closing Costs with Preferred Lender!

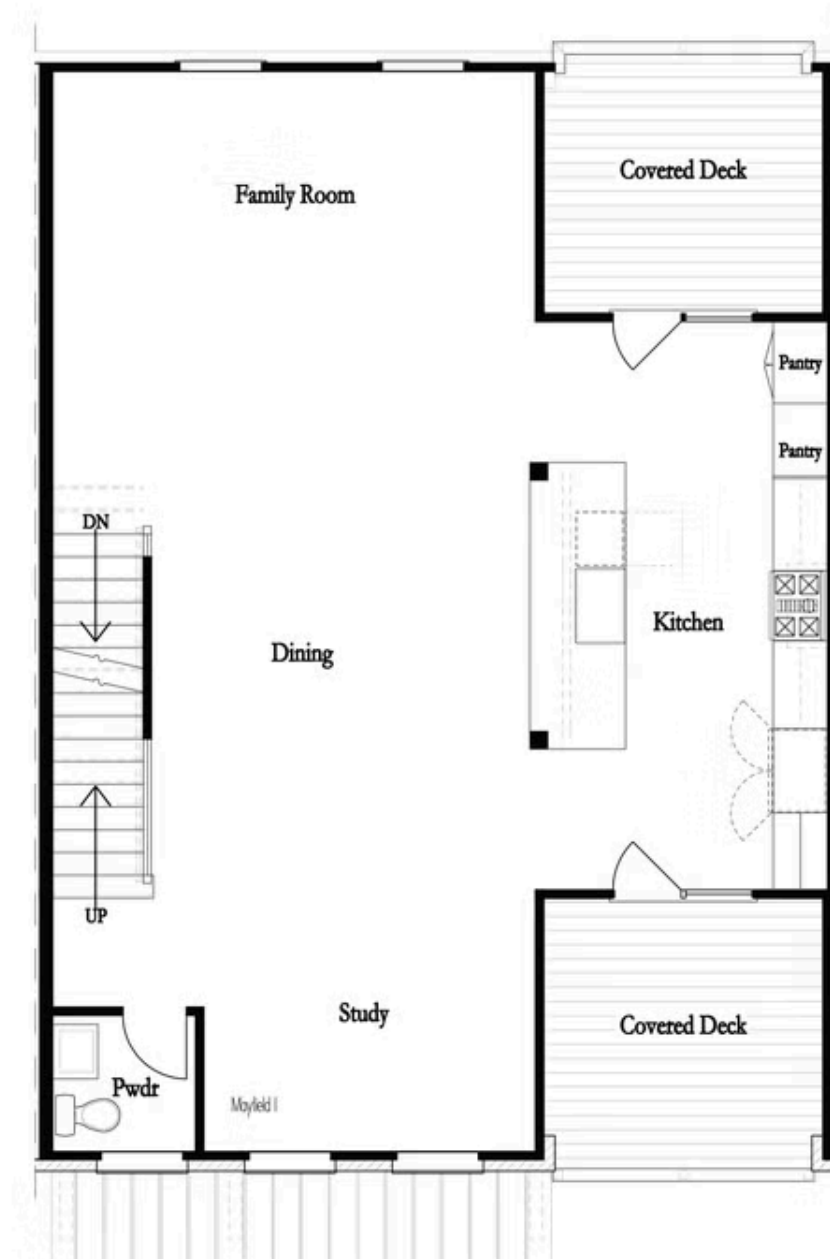
Want to Know More
About This Home?

CONTACT OUR COMMUNITY SALES MANAGER
Call Us @ 470.436.2641



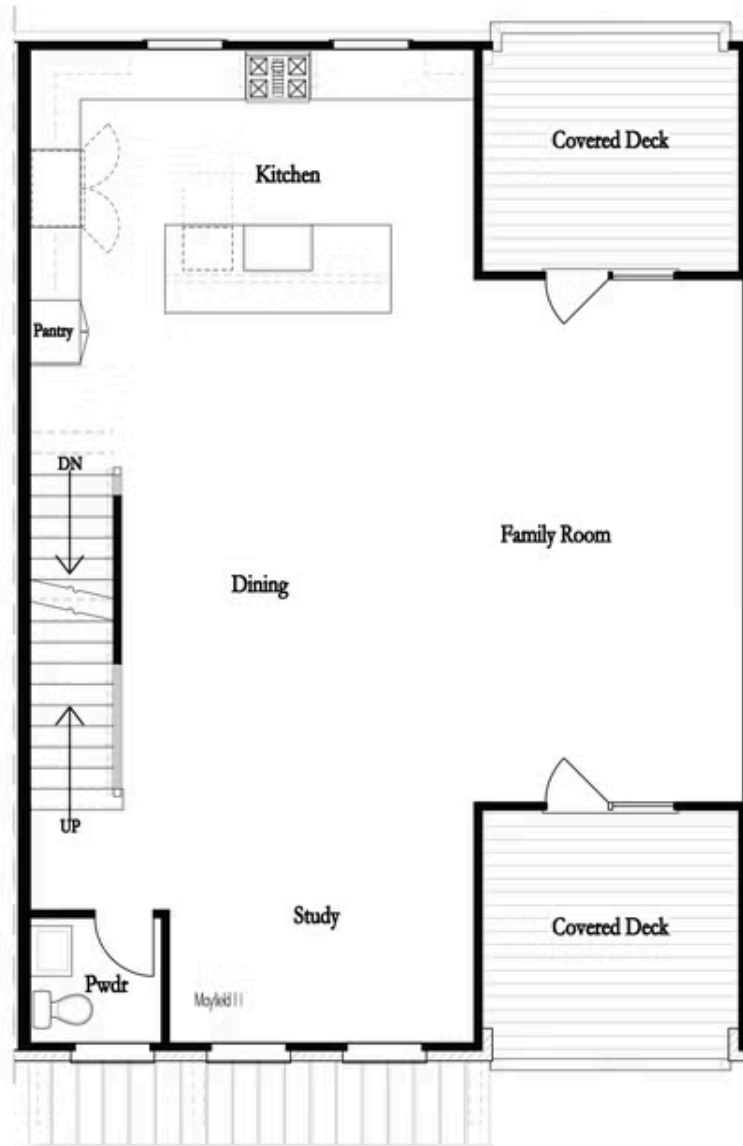
Want to Know More
About This Home?

CONTACT OUR COMMUNITY SALES MANAGER
Call Us @ 470.436.2641



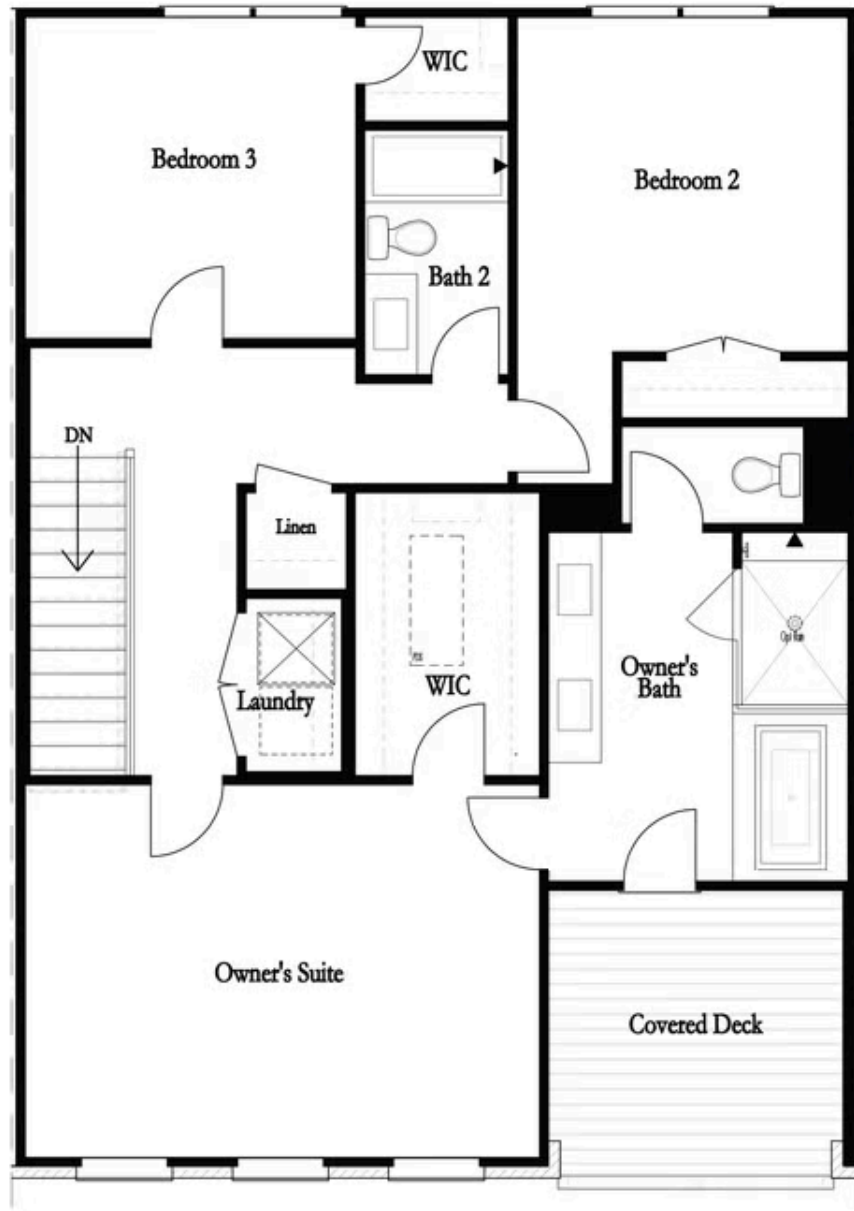
Want to Know More
About This Home?

CONTACT OUR COMMUNITY SALES MANAGER
Call Us @ 470.436.2641



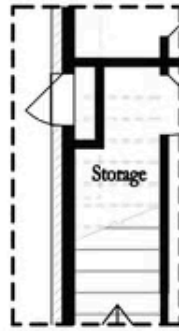
Want to Know More
About This Home?

CONTACT OUR COMMUNITY SALES MANAGER
Call Us @ 470.436.2641

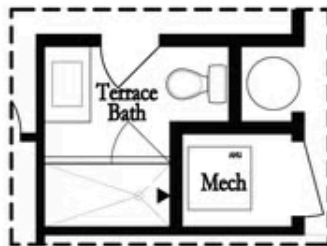


Want to Know More
About This Home?

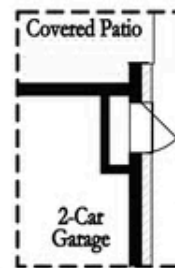
CONTACT OUR COMMUNITY SALES MANAGER
Call Us @ 470.436.2641



Opt Left Side Sprinkler Room



Deluxe Opt Shower Only



Opt Right Side Sprinkler Room

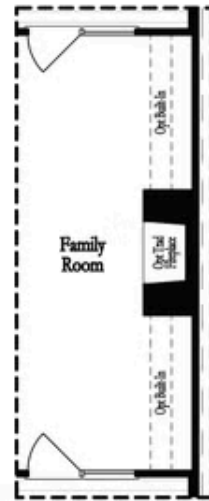
1st Flr Options

Want to Know More
About This Home?

CONTACT OUR COMMUNITY SALES MANAGER
Call Us @ 470.436.2641



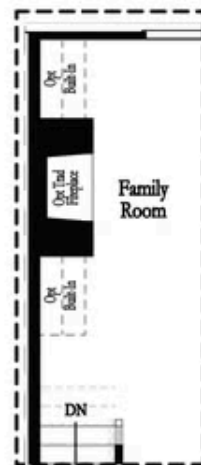
Deluxe Opt Linear Fireplace



Deluxe Opt Traditional Fireplace



Deluxe Opt Linear Fireplace

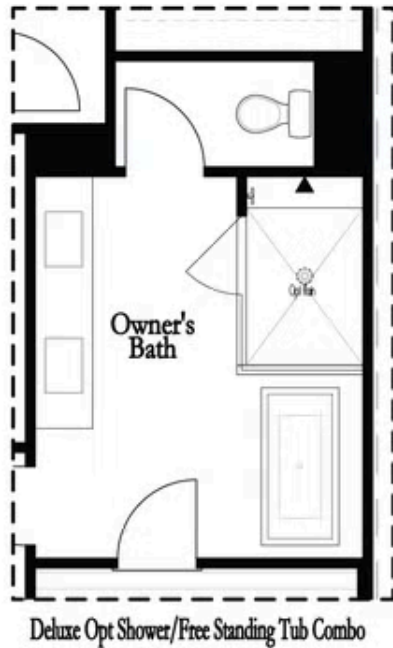


Deluxe Opt Traditional Fireplace

2nd Flr Options

Want to Know More
About This Home?

CONTACT OUR COMMUNITY SALES MANAGER
Call Us @ 470.436.2641



3rd Flr Options

Want to Know More
About This Home?

CONTACT OUR COMMUNITY SALES MANAGER
Call Us @ 470.436.2641