



PRICED AT
\$914,905

 2515 Sq Ft

 4 Beds

 3.5 Baths

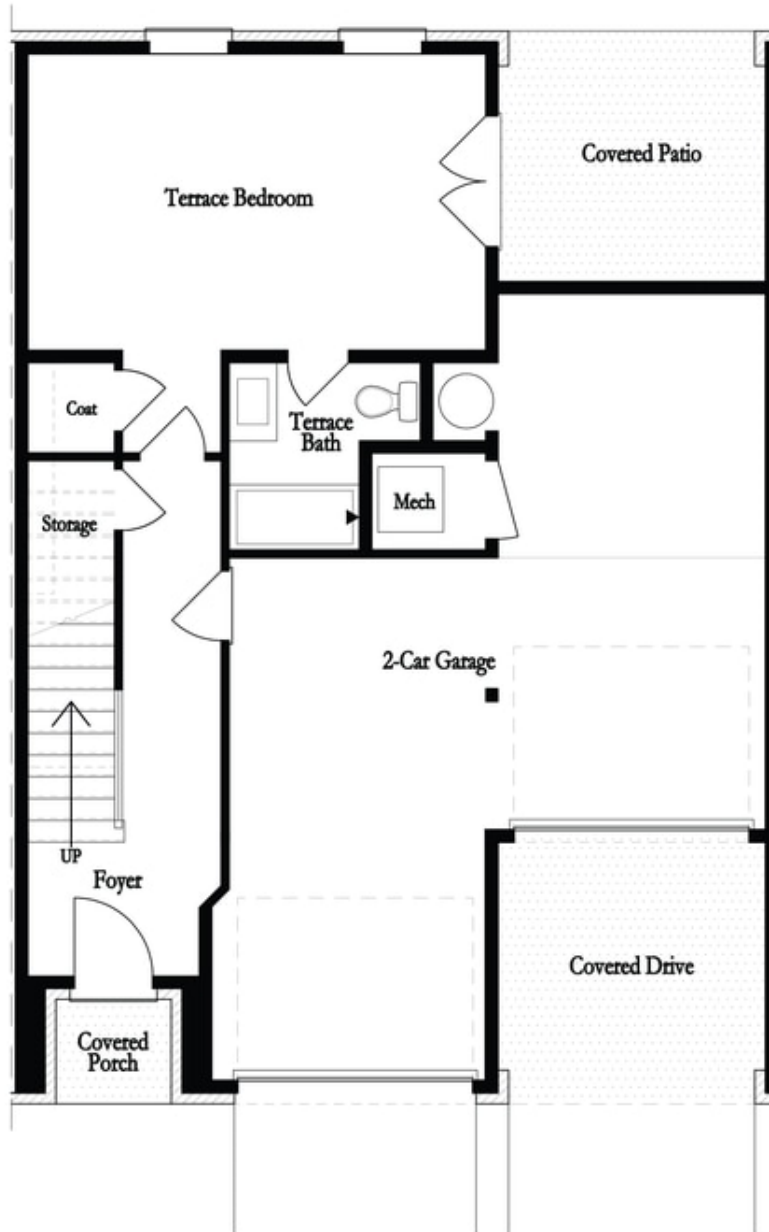
 2 Car Garage

 3.0 Story

The Providence Groups Newest Townhouse. Gorgeous Brownstone Collection! Amazing mixed-use development, live/work/play Community in the heart of Alpharetta! Just steps away from Maxwell retail, featuring Rena's Italian Fishery, Lily's sushi, Poncho chicken, and Fairway Social with a roof top Bar! On the Alpha loop and a few blocks from Downtowns Alpharetta. End Unit! 4 Bedroom/3.5 Bath Open Concept Townhome, main floor boasts Beautiful Oyster stacked cabinets, Chef's Kitchen features GE Café appliances, gorgeous Cambria quartz countertops w/large island overlooking roomy family room with study, including to 2 covered decks covered rear porch. Spectacular hickory hardwoods throughout! Expansive Owners bedroom features elegant ensuite with an enormous shower & covered porch. Spacious secondary bedrooms, one with a private bath. Fenced in backyard! Community Features: Pool, Cabana, Bocce Ball, Firepit, Alpha loop and Maxwell Retail. Home under construction! Pictures only for informational purposes. Completion by Sept/Oct 2022. HOA maintained homesites! \$5k in Closing Costs with Green Brick Mortgage. 1-2-8 Warranty. Come Make Space for Life with The Providence Group! [The Mayfield]

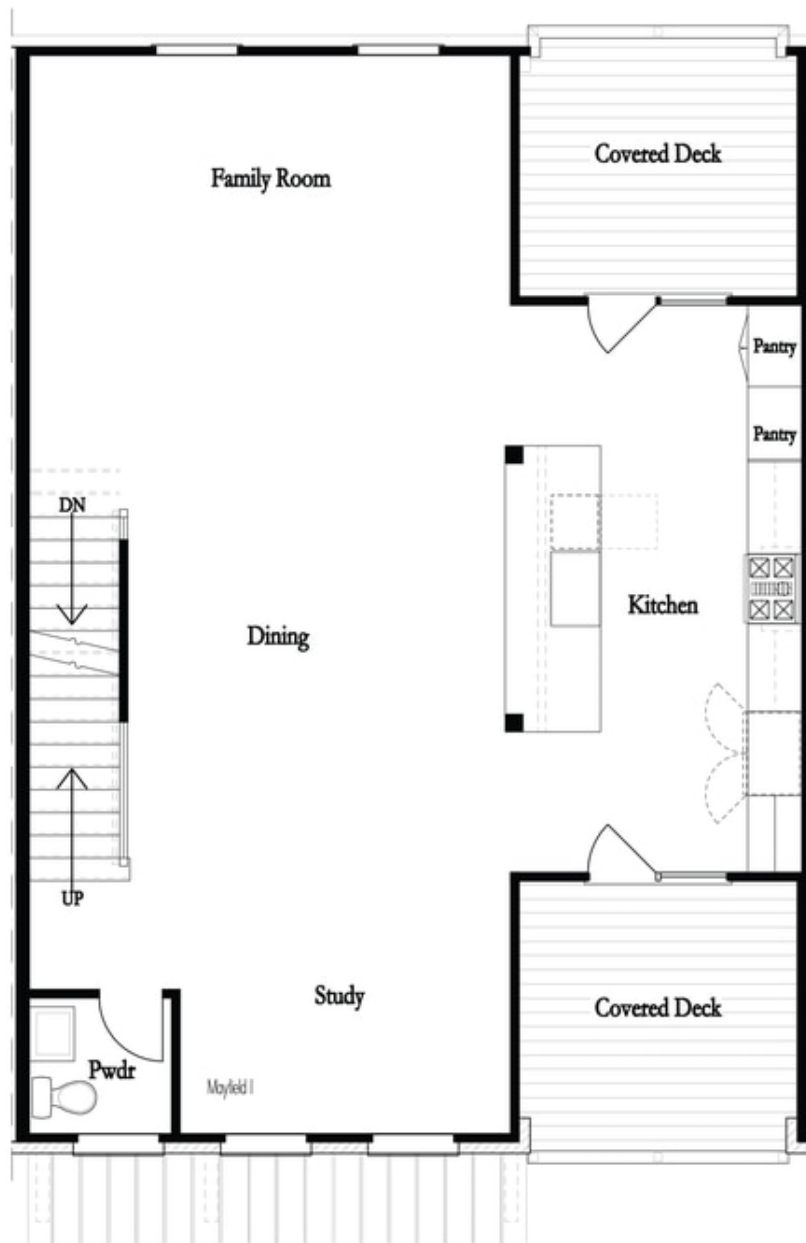
Want to Know More
About This Home?

CONTACT OUR COMMUNITY SALES MANAGER
Call Us @ 470.436.2641



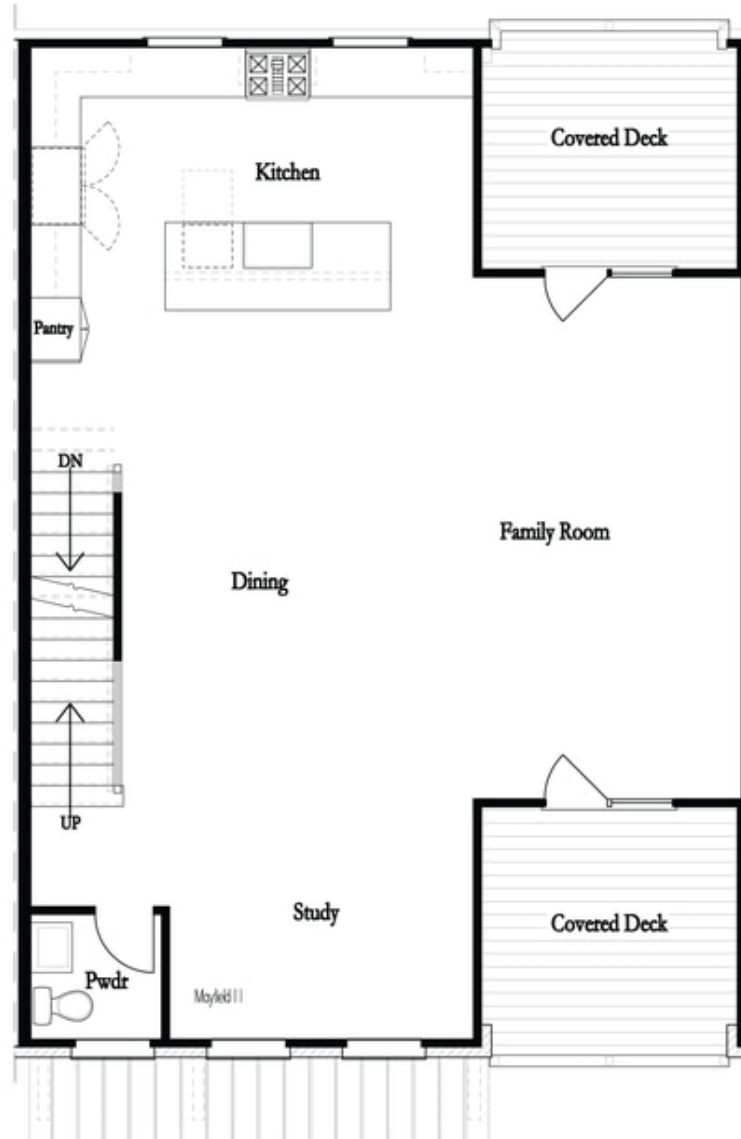
**Want to Know More
About This Home?**

CONTACT OUR COMMUNITY SALES MANAGER
Call Us @ 470.436.2641



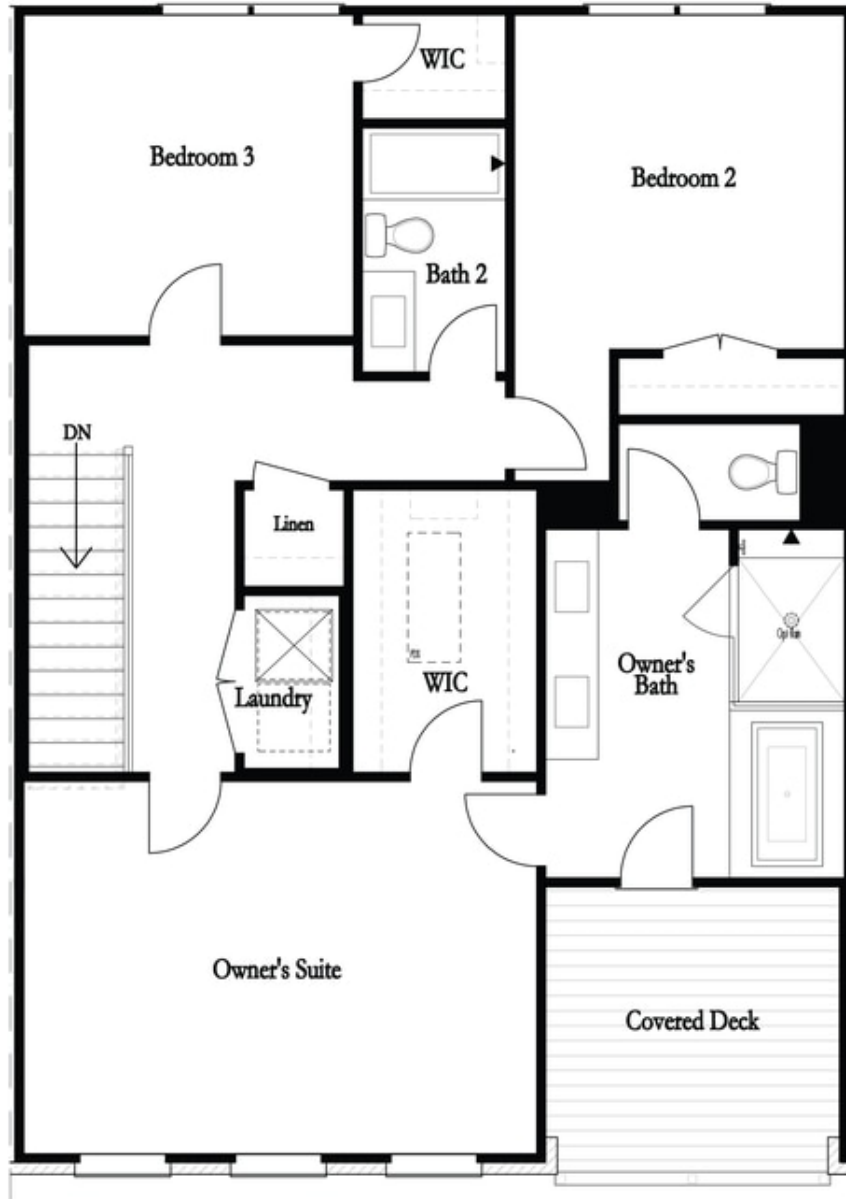
**Want to Know More
About This Home?**

CONTACT OUR COMMUNITY SALES MANAGER
Call Us @ 470.436.2641



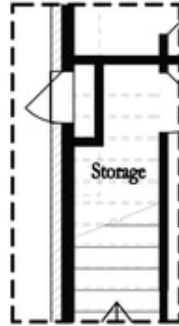
Want to Know More
About This Home?

CONTACT OUR COMMUNITY SALES MANAGER
Call Us @ 470.436.2641

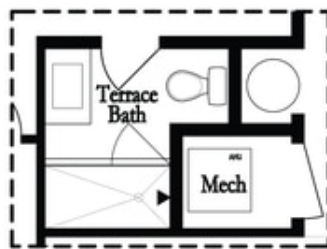


**Want to Know More
About This Home?**

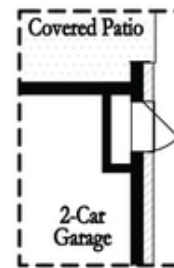
CONTACT OUR COMMUNITY SALES MANAGER
Call Us @ 470.436.2641



Opt Left Side Sprinkler Room



Deluxe Opt Shower Only

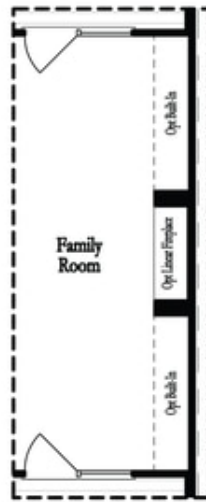


Opt Right Side Sprinkler Room

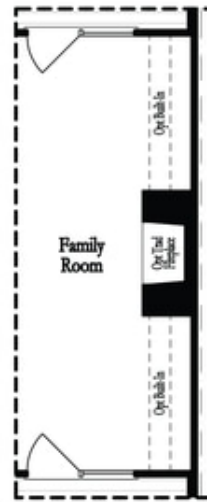
1st Flr Options

**Want to Know More
About This Home?**

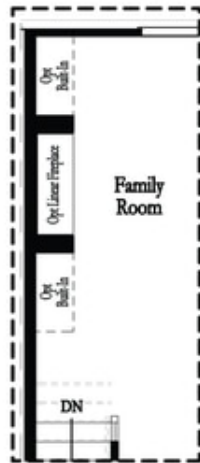
CONTACT OUR COMMUNITY SALES MANAGER
Call Us @ 470.436.2641



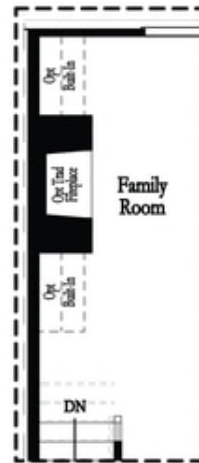
Deluxe Opt Linear Fireplace



Deluxe Opt Traditional Fireplace



Deluxe Opt Linear Fireplace

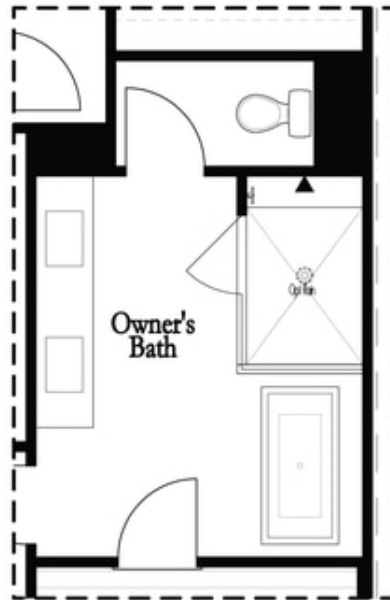


Deluxe Opt Traditional Fireplace

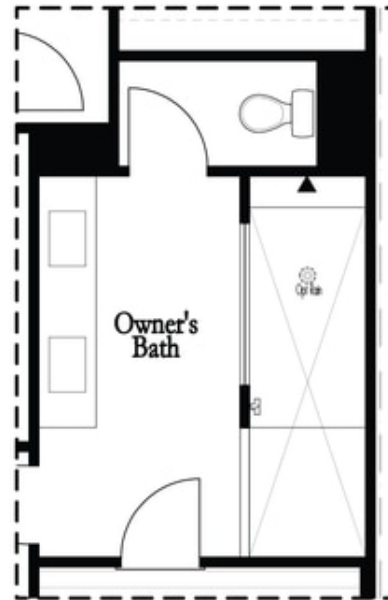
2nd Flr Options

**Want to Know More
About This Home?**

CONTACT OUR COMMUNITY SALES MANAGER
Call Us @ 470.436.2641



Deluxe Opt Shower/Free Standing Tub Combo



Deluxe Opt Walk-Through Shower

3rd Flr Options

**Want to Know More
About This Home?**

CONTACT OUR COMMUNITY SALES MANAGER
Call Us @ 470.436.2641