



PRICED AT
\$499,900

 1490 Sq Ft

 2 Beds

 2.0 Baths

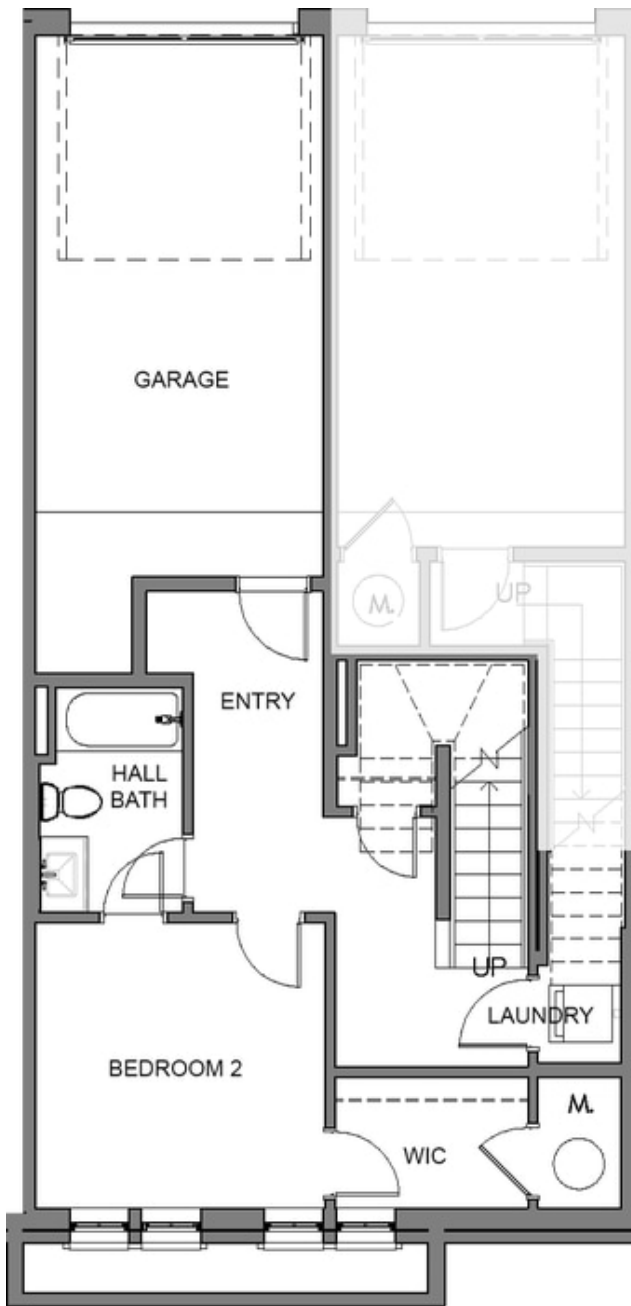
 1 Car Garage

 2.0 Story

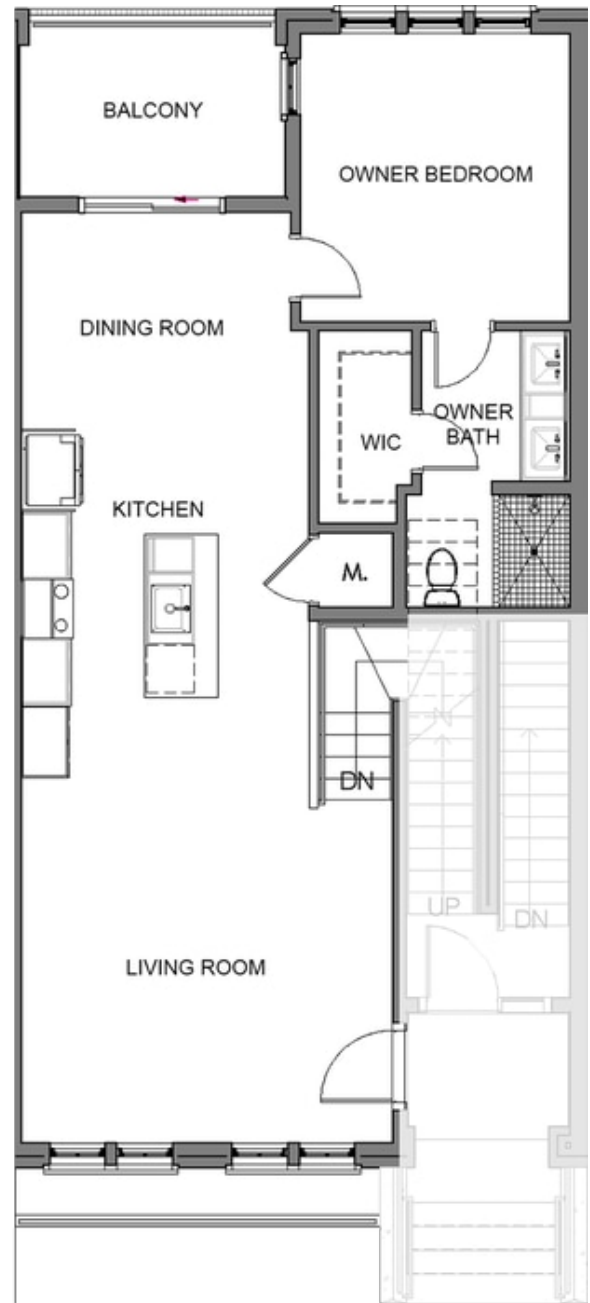
Crawford END UNIT Condo by The Providence Group. Ready next Spring! Featuring a 2-story 4-sided brick condo steps away from what will be the newest place to be entertained, go shopping & enjoy dinner at The Maxwell Retail featuring Fairway Social and Rena's! Condo will feature upscale stainless appliances, quartz counters, open floor plan & large deck. 2 huge storage closets to keep all your goodies stored. Lots of windows letting tons of natural light in. Pool, cabana, clubhouse, firepits, access to Alpha Loop and pocket parks and Bocce ball. Starbucks next door! HOA maintained landscape in the heart of Downtown Alpharetta! Walkable to City Center/quickly get to Avalon & 400N/S. Still have time to choose on interior design package! \$5k toward closing costs with preferred lender.

**Want to Know More
About This Home?**

CONTACT OUR COMMUNITY SALES MANAGER
Call Us @ 470.436.2641



Level 1



Level 2

**Want to Know More
 About This Home?**

CONTACT OUR COMMUNITY SALES MANAGER
 Call Us @ 470.436.2641