



PRICED AT  
**\$500,920**

 1490 Sq Ft

 2 Beds

 2.0 Baths

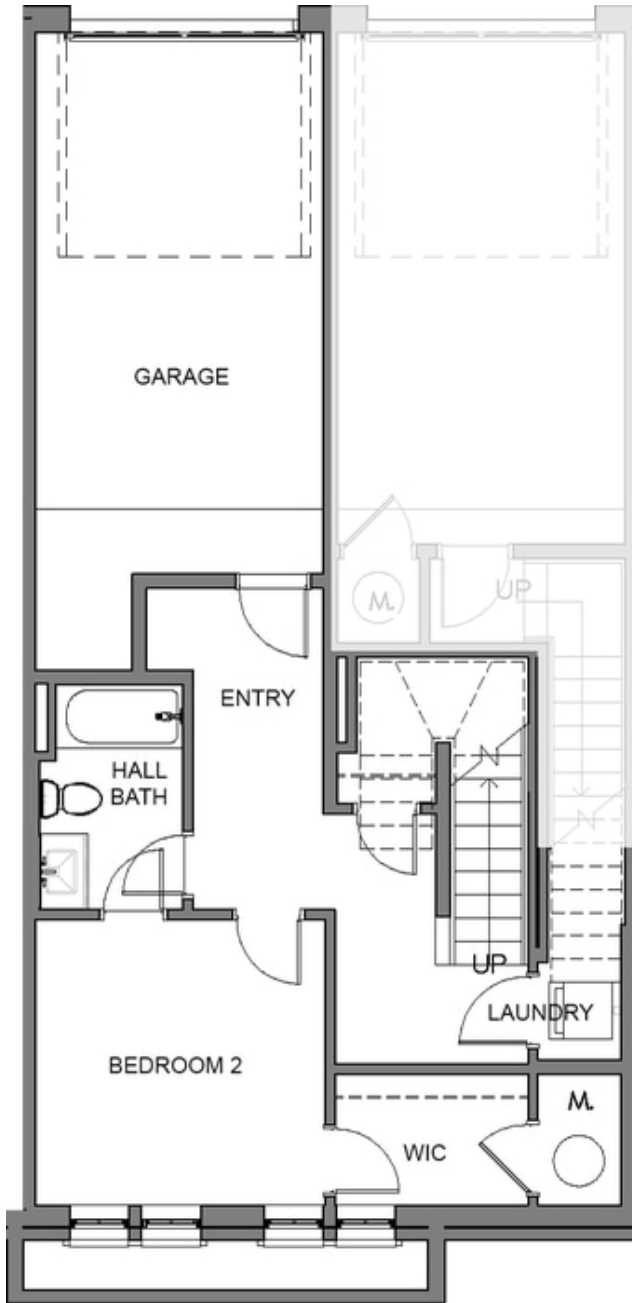
 1 Car Garage

 2.0 Story

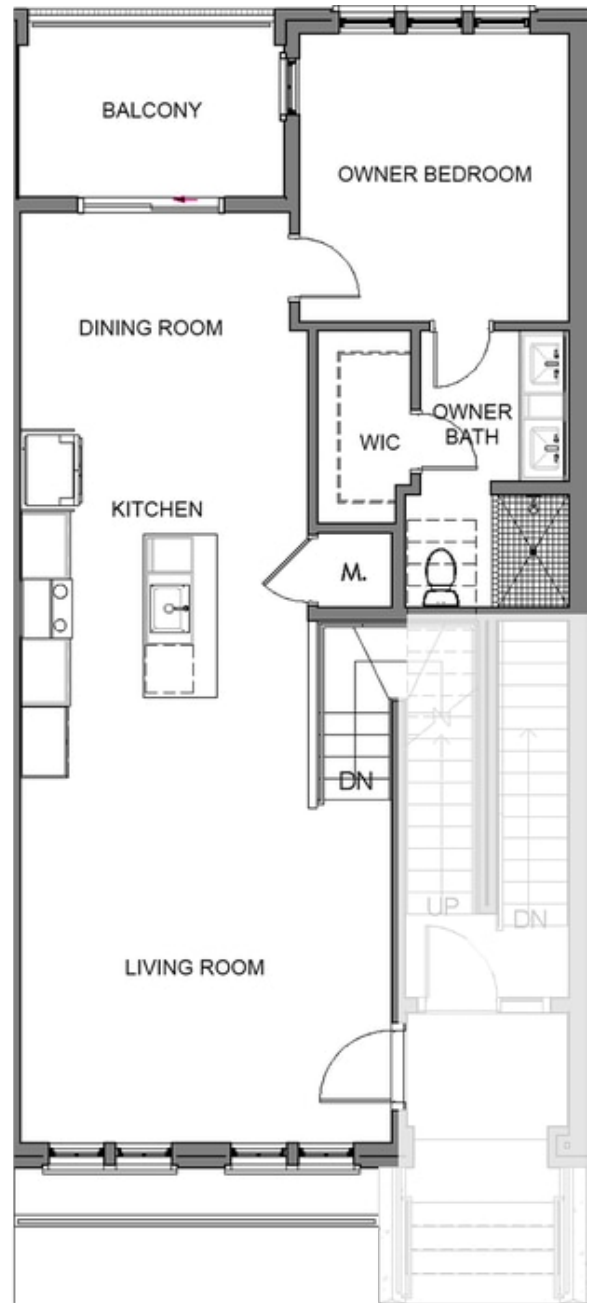
Crawford END UNIT Condo by The Providence Group. Ready Early Summer! Featuring a 2-story 4-sided brick condo steps away from what will be the newest place to be entertained, go shopping & enjoy dinner at The Maxwell Retail featuring Fairway Social and Rena's! Condo will feature upscale stainless appliances, quartz counters, open floor plan & large deck. 2 huge storage closets to keep all your goodies stored. Lots of windows letting tons of natural light in. Pool, cabana, clubhouse, firepits, access to Alpha Loop and pocket parks and Bocce ball. Starbucks next door! Shake Shack next door coming soon! HOA maintained landscape in the heart of Downtown Alpharetta! Walkable to City Center/quickly get to Avalon & 400N/S. \$5k toward closing costs with preferred lender. Come Make Space For Life!

Want to Know More  
About This Home?

CONTACT OUR COMMUNITY SALES MANAGER  
Call Us @ 470.436.2641



Level 1



Level 2

**Want to Know More  
 About This Home?**

CONTACT OUR COMMUNITY SALES MANAGER  
 Call Us @ 470.436.2641