

PRICED AT
\$472,900

 **1490 Sq Ft**

 **2 Beds**

 **2.0 Baths**

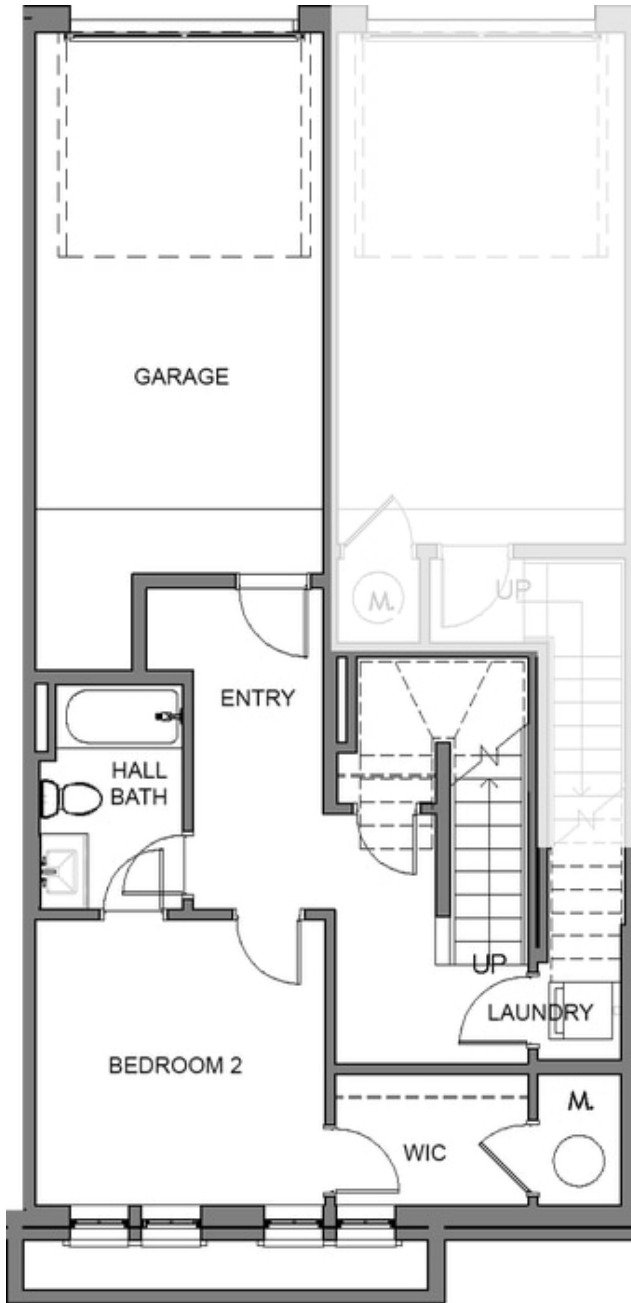
 **1 Car Garage**

 **2.0 Story**

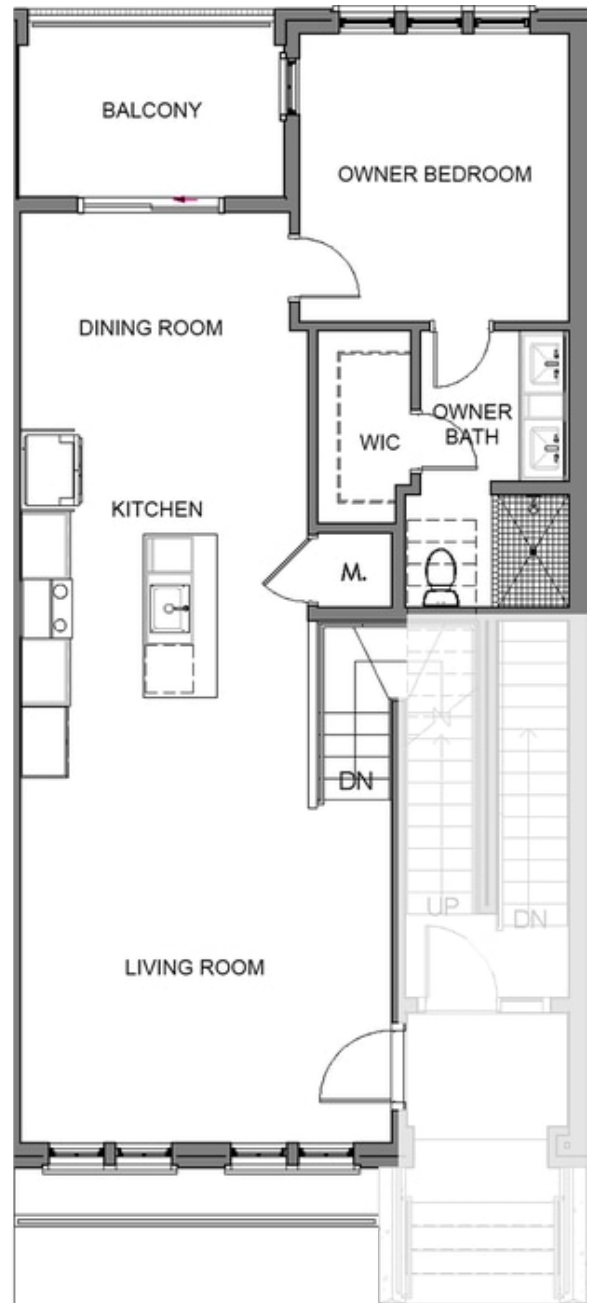
Crawford Stacked Townhome by The Providence Group. Fall in love with the popular Crawford model in a wonderfully designed community where luxury meets lifestyle! First two floors in our new building just a short walk away from what will be the newest place to be entertained at Fairway Social, go shopping & enjoy delicious food at The Maxwell Retail. Condo will feature upscale Whirlpool stainless appliances, quartz counters, oversized island & large covered deck. Still time to pick your design package! Under Construction, est. completion Feb/Mar 2022. Maxwell features pool, cabana, firepit & Bocce Ball! Access to Alpha Loop, pocket parks, HOA maintained landscape in the heart of Downtown Alpharetta. Walkable to City Center/quickly get to Avalon & 400N/S. 1-2-10 Warranty.

**Want to Know More
About This Home?**

CONTACT OUR COMMUNITY SALES MANAGER
Call Us @ 470.436.2641



Level 1



Level 2

**Want to Know More
About This Home?**

CONTACT OUR COMMUNITY SALES MANAGER
Call Us @ 470.436.2641