



PRICED FROM  
**\$946,905**

 2,515 Sq Ft

 4 Beds

 3.5 Baths

 2 Car Garage

 3.0 Story

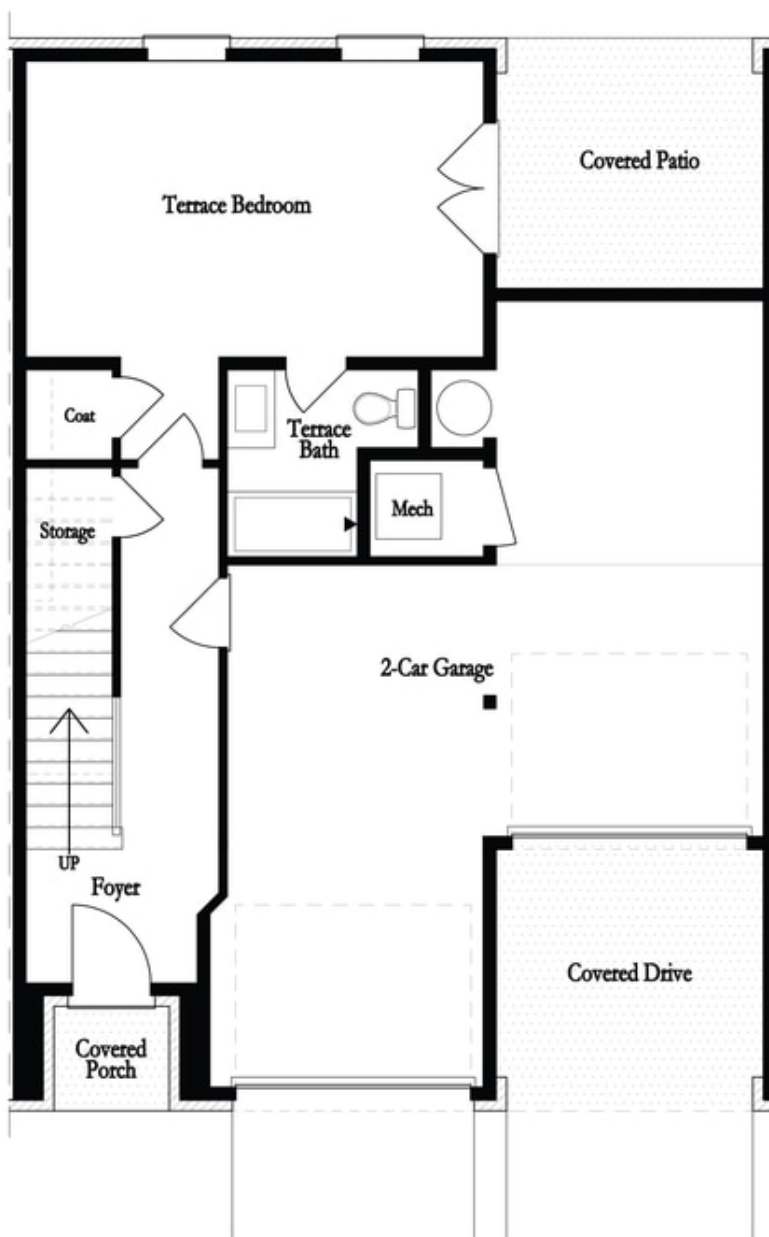
- Gourmet Kitchen with Island overlooking Dining and Family Room
- Owner's Suite and Private Bath with Dual Vanities and Large Walk-In Shower
- Private Guest Suite on Terrace Level
- Covered patio off Main Level
- Two Car Garage

[Read More Online](#)

## Available Elevations



Mayfield - Front Elevation

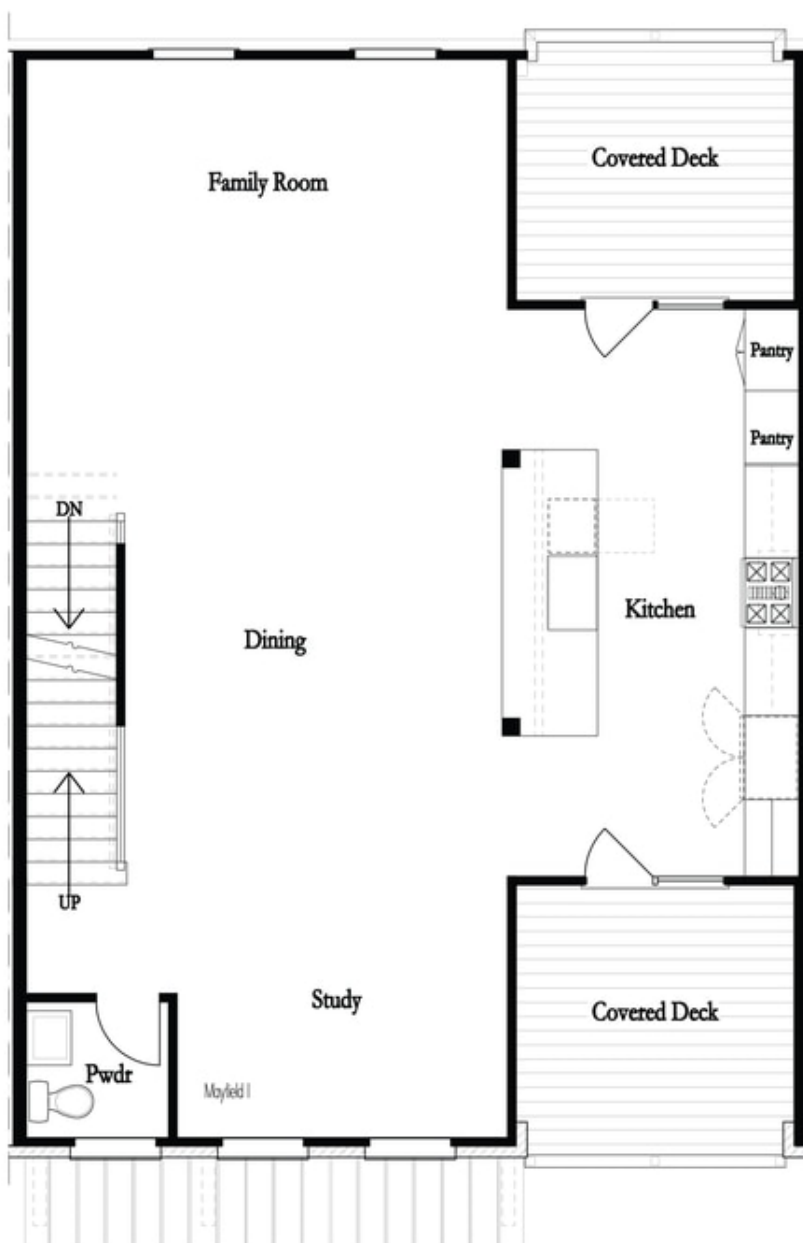


Want to Know More  
About This Home?

CONTACT OUR NEW HOME NAVIGATOR

**NONE**

Call Us @ 470.436.2641

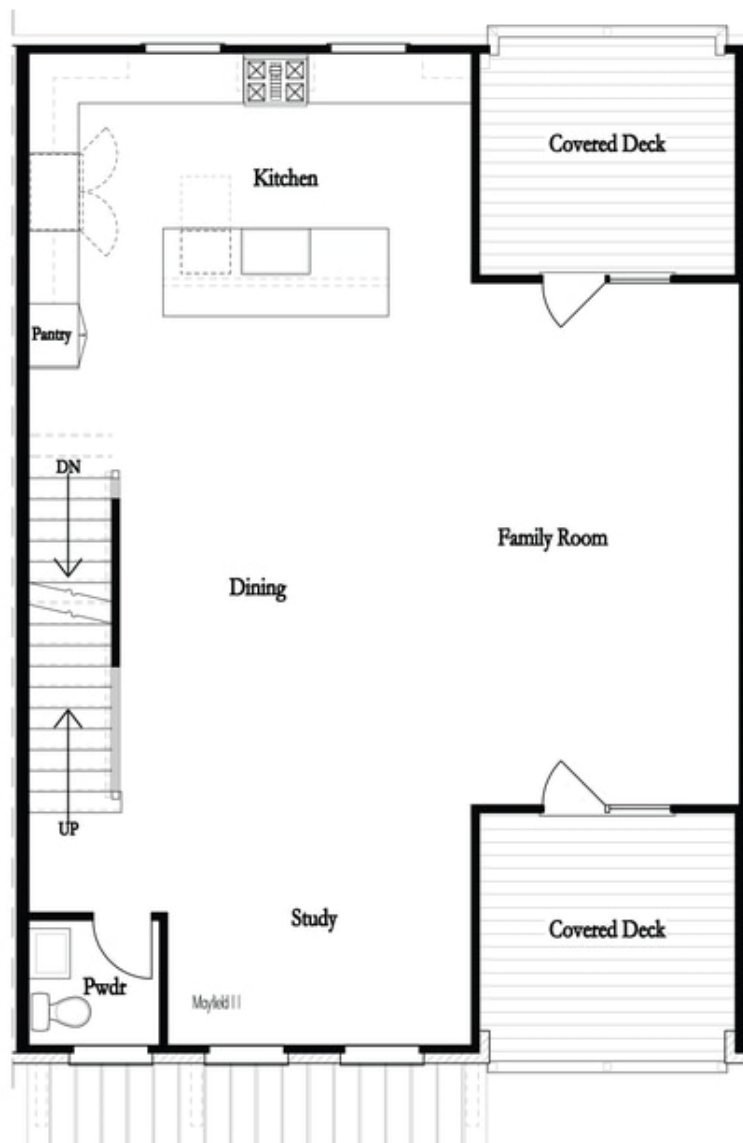


Want to Know More  
About This Home?

CONTACT OUR NEW HOME NAVIGATOR

**NONE**

Call Us @ 470.436.2641

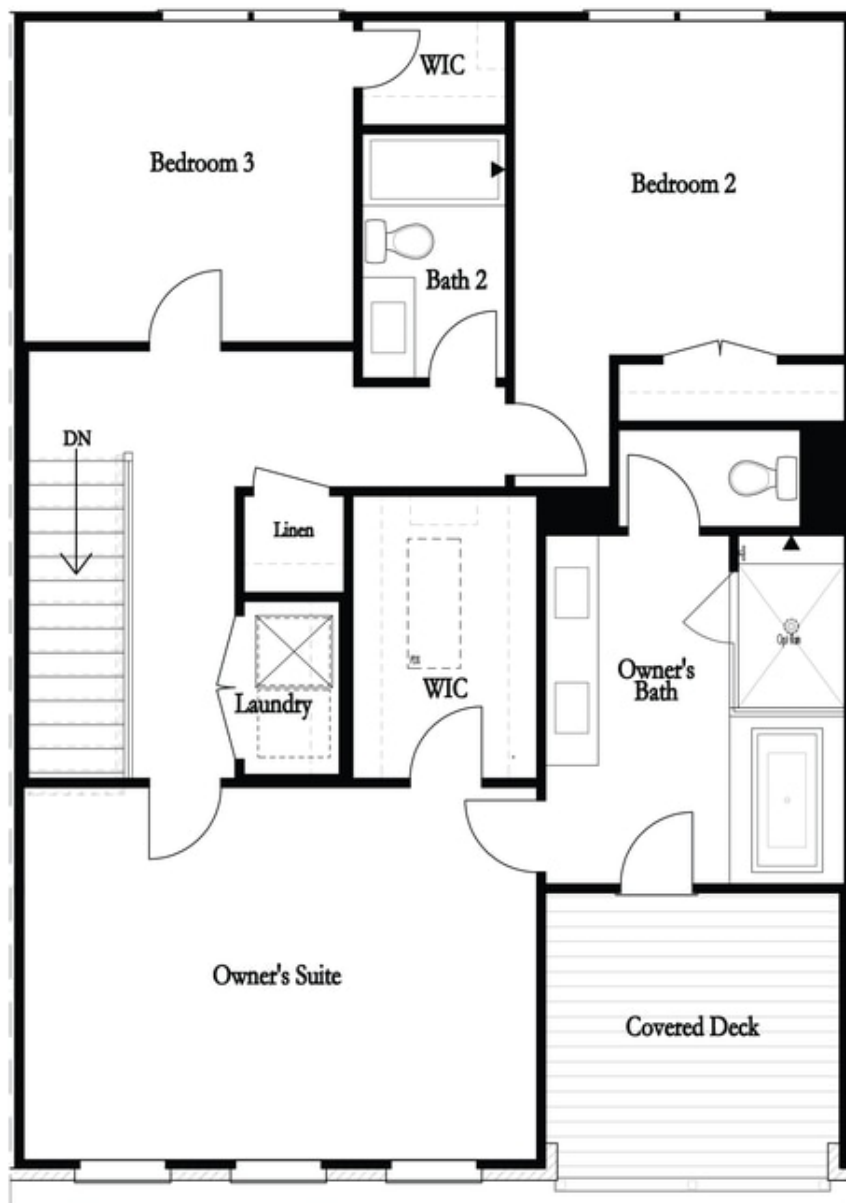


Want to Know More  
About This Home?

CONTACT OUR NEW HOME NAVIGATOR

**NONE**

Call Us @ 470.436.2641

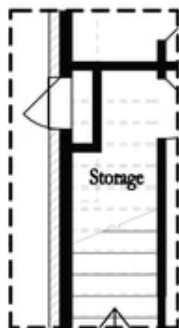


Want to Know More  
About This Home?

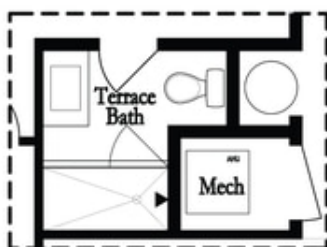
CONTACT OUR NEW HOME NAVIGATOR

**NONE**

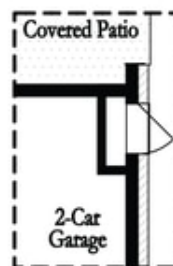
Call Us @ 470.436.2641



Opt Left Side Sprinkler Room



Deluxe Opt Shower Only



Opt Right Side Sprinkler Room

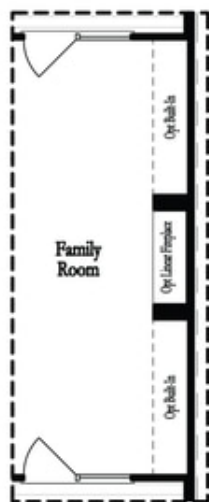
## 1st Flr Options

Want to Know More  
About This Home?

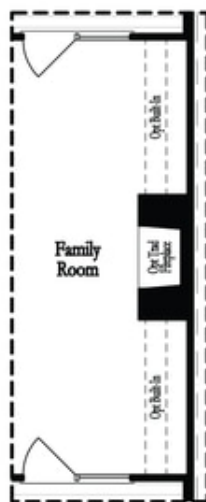
CONTACT OUR NEW HOME NAVIGATOR

**NONE**

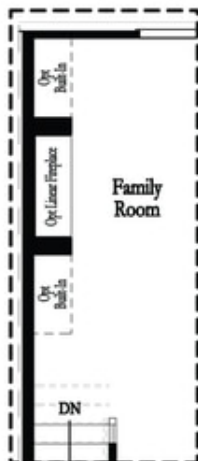
Call Us @ 470.436.2641



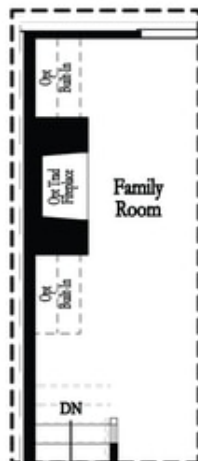
Deluxe Opt Linear Fireplace



Deluxe Opt Traditional Fireplace



Deluxe Opt Linear Fireplace



Deluxe Opt Traditional Fireplace

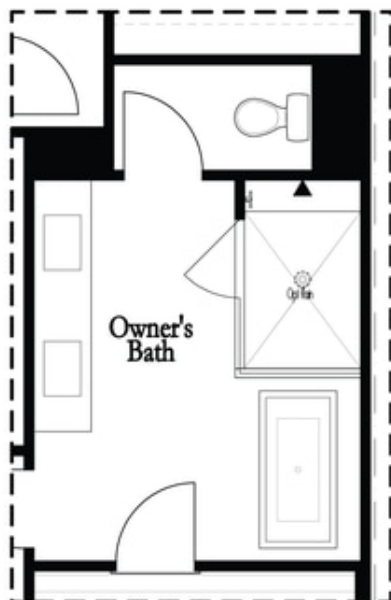
## 2nd Flr Options

Want to Know More  
About This Home?

CONTACT OUR NEW HOME NAVIGATOR

**NONE**

Call Us @ 470.436.2641



Deluxe Opt Shower/Free Standing Tub Combo



Deluxe Opt Walk-Through Shower

## 3rd Flr Options

Want to Know More  
About This Home?

CONTACT OUR NEW HOME NAVIGATOR

**NONE**

Call Us @ 470.436.2641