



PRICED AT
\$957,585

 2105 Sq Ft

 3 Beds

 3.5 Baths

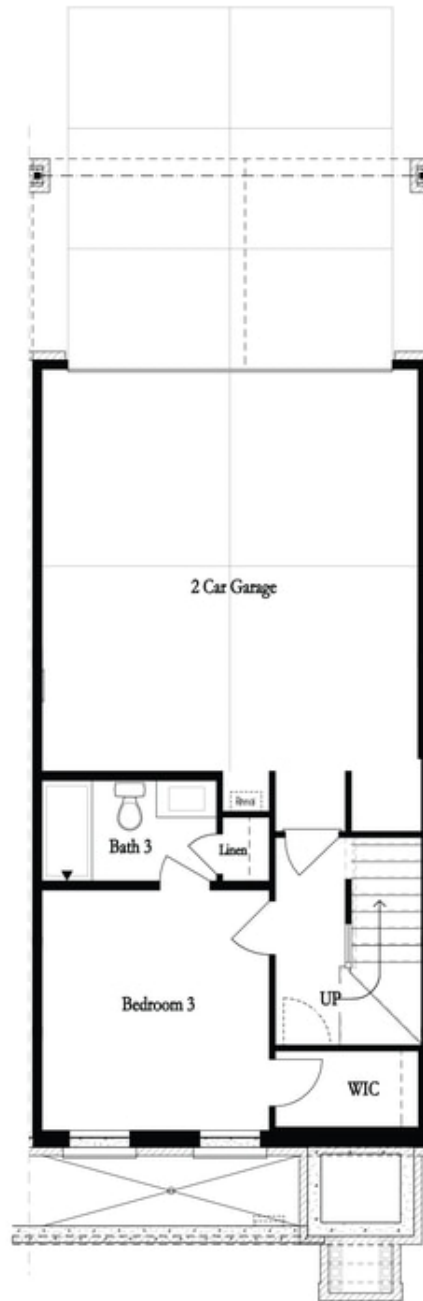
 2 Car Garage

 3.0 Story

Unwrap the Savings with \$20,000 towards closing costs with preferred lender on homes written by Dec 22, 2022 and closed by Jan 31, 2023! The Chamberlain Home Design features 3 Bed / 3.5 Bath ~ FIREPLACE ~ WALK THROUGH SHOWER ~ DESIGNER CURATED FINISHES ~ Towns on Thompson- a boutique community of 48 townhomes combining luxury living with exclusive locality. Ideally situated on Thompson Street separating Downtown Alpharetta from Avalon, the possibilities are endless in the heart of vibrant Alpharetta! Guest welcome to park on Thompson Street as they enter your front stoop to arrive immediately at your open concept main level featuring 10 ft ceilings & Hardwoods Throughout ALL of home. Bright and Open Kitchen mindfully situated in the front of home w/ Bright White stacked cabinets to the ceiling paired with white Island with Cambria Quartz Countertop & white herringbone backsplash. GE Café Appliances including a gorgeous 36" Commercial Range w/ Gas Oven + Modern Designer Hood Vent + Café Dishwasher + Microwave Drawer Oven. Dining space separates kitchen from your living room featuring a modern FIREPLACE with Structured White Quartzite Surround. TV Bracing, Smart Tubes, Media Outlets, and Wireless Access Points have been installed for easy setup. Additional ...

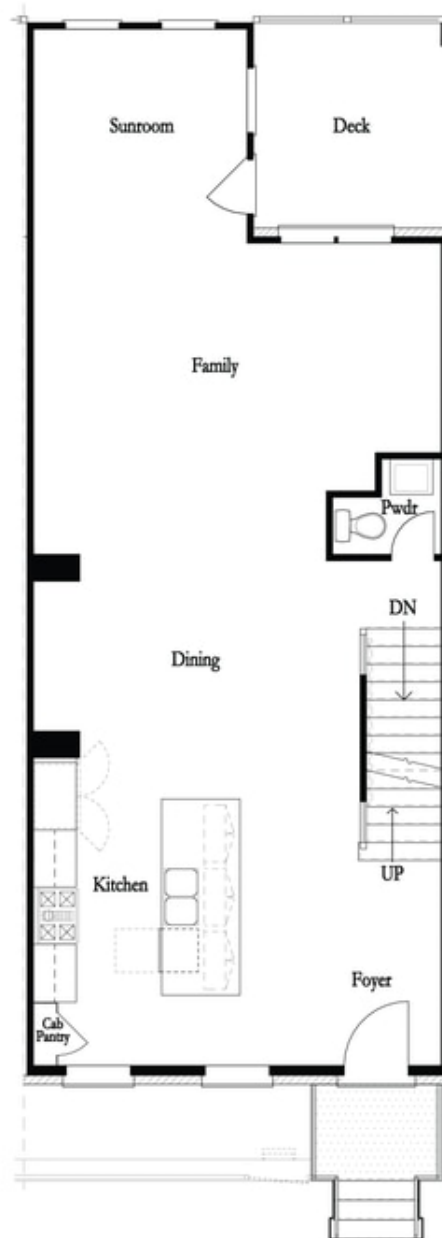
**Want to Know More
About This Home?**

CONTACT OUR COMMUNITY SALES MANAGER
Call Us @ 470.248.2777



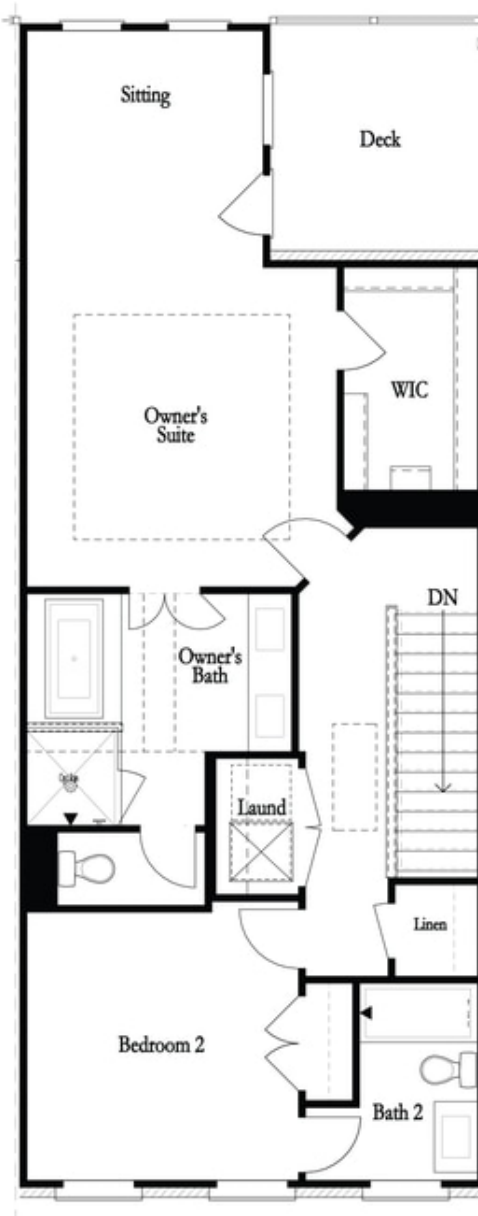
**Want to Know More
About This Home?**

CONTACT OUR COMMUNITY SALES MANAGER
Call Us @ 470.248.2777



**Want to Know More
About This Home?**

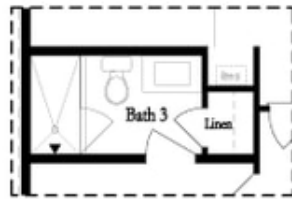
CONTACT OUR COMMUNITY SALES MANAGER
Call Us @ 470.248.2777



**Want to Know More
About This Home?**

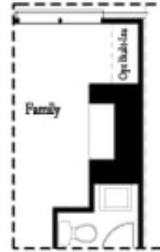
CONTACT OUR COMMUNITY SALES MANAGER
Call Us @ 470.248.2777

Optional Layouts

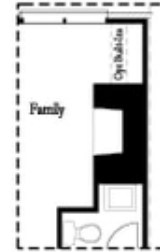


Opt. Shower

First Floor Options



Opt. Linear Fireplace

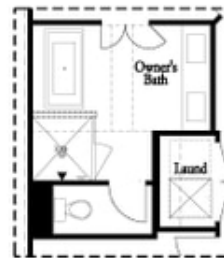


Opt. Fireplace

Second Floor Options



Opt. Walk-Through Shower



Opt. Freestanding Tub/Shower Combo

Third Floor Options

**Want to Know More
 About This Home?**

CONTACT OUR COMMUNITY SALES MANAGER
 Call Us @ 470.248.2777