




PRICED AT  
**\$1,079,095**

 2325 Sq Ft

 4 Beds

 3.5 Baths

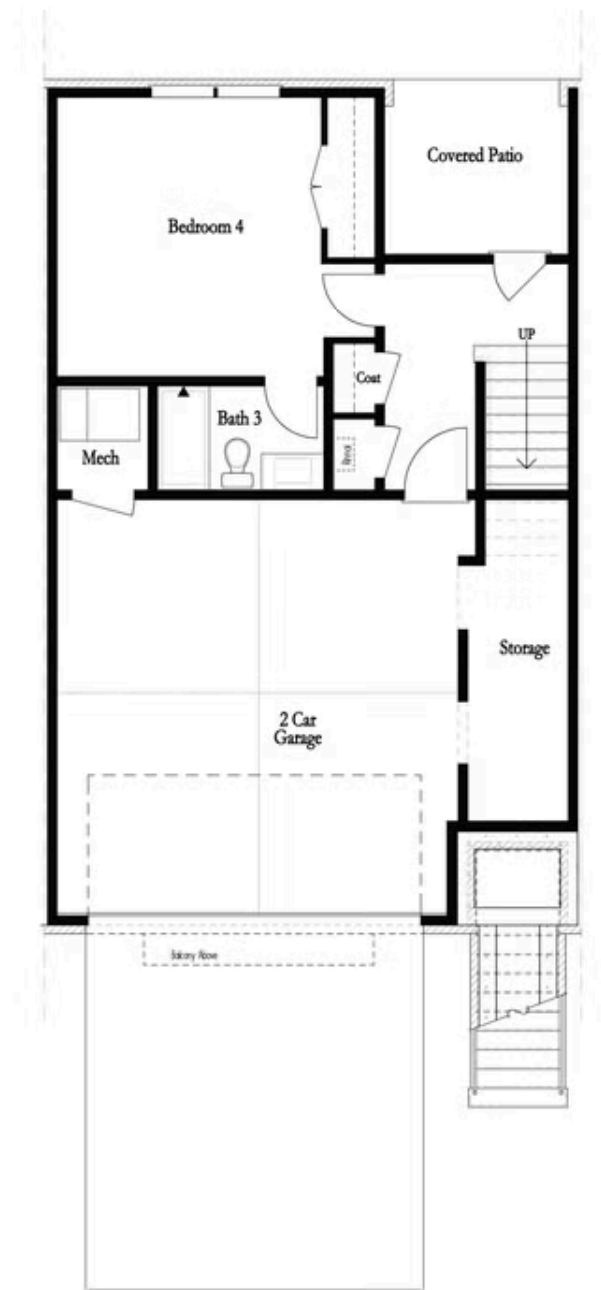
 2 Car Garage

 3.0 Story

The Chaucer Home Design features 4 Bed / 3.5 Bath ~ END UNIT + DESIGNER CURATED FINISHES ~ Towns on Thompson- a boutique community of 48 townhomes combining luxury living with exclusive locality. Ideally situated on Thompson Street separating Downtown Alpharetta from Avalon, the possibilities are endless in the heart of vibrant Alpharetta! This beautiful home design sits over 25 ft wide with 3 stunning 8 ft arched windows on your main level, truly making this space feel abundantly bright, spacious, and open! Enjoy Hardwoods Throughout the home, 10 ft ceilings + oversized, split staircases featuring open railing providing views to your front door Foyer (perfect for statement foyer chandelier) & Custom Trim Wall installed vertically from the Foyer to the 3rd floor. Kitchen is mindfully situated in the rear of home overlooking HOA Maintained backyard & pocket park. Home Site 18 features stacked white cabinets to the ceiling, driftwood island with Cambria Quartz Countertops, Farmhouse Sink, and Custom Pantry Shelving. Dinner Party prep made easy with GE Café Appliances including a gorgeous 36" Commercial Range w/ Gas Oven + Modern Designer Hood Vent + Café Dishwasher + plus an additional Café Double Wall Oven with Convection. Enjoy Covered Deck ...

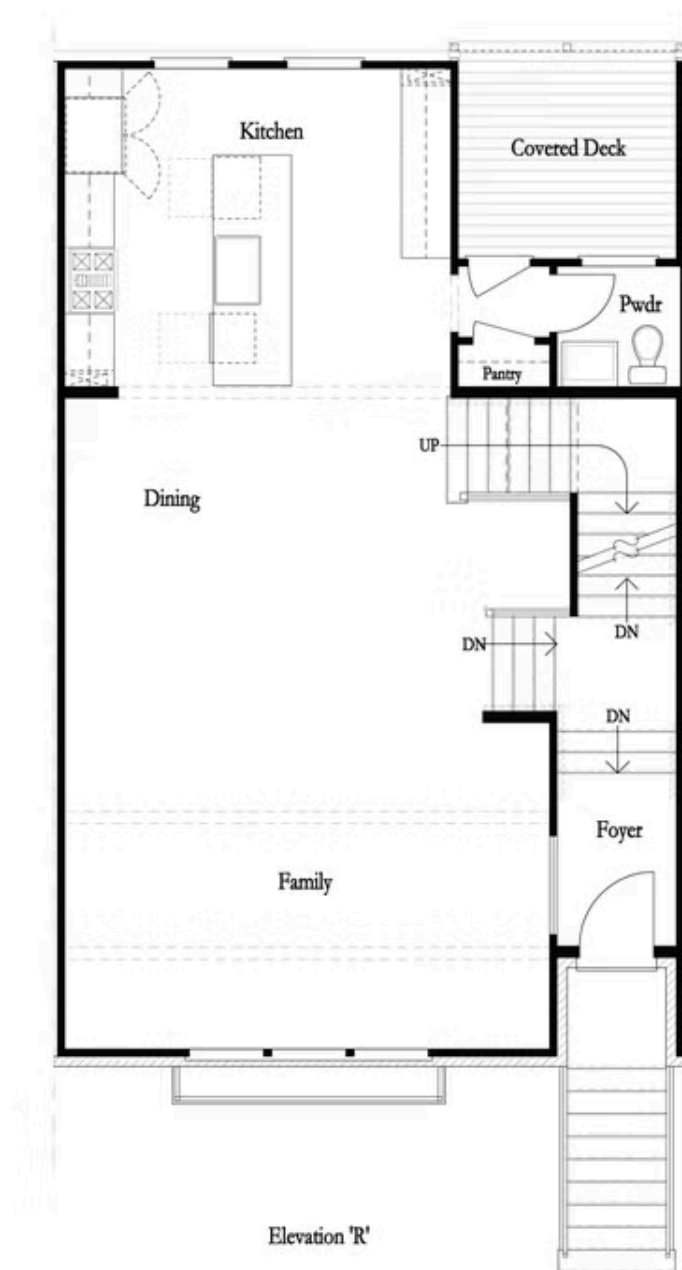
**Want to Know More  
About This Home?**

CONTACT OUR COMMUNITY SALES MANAGER  
Call Us @ 470.248.2777



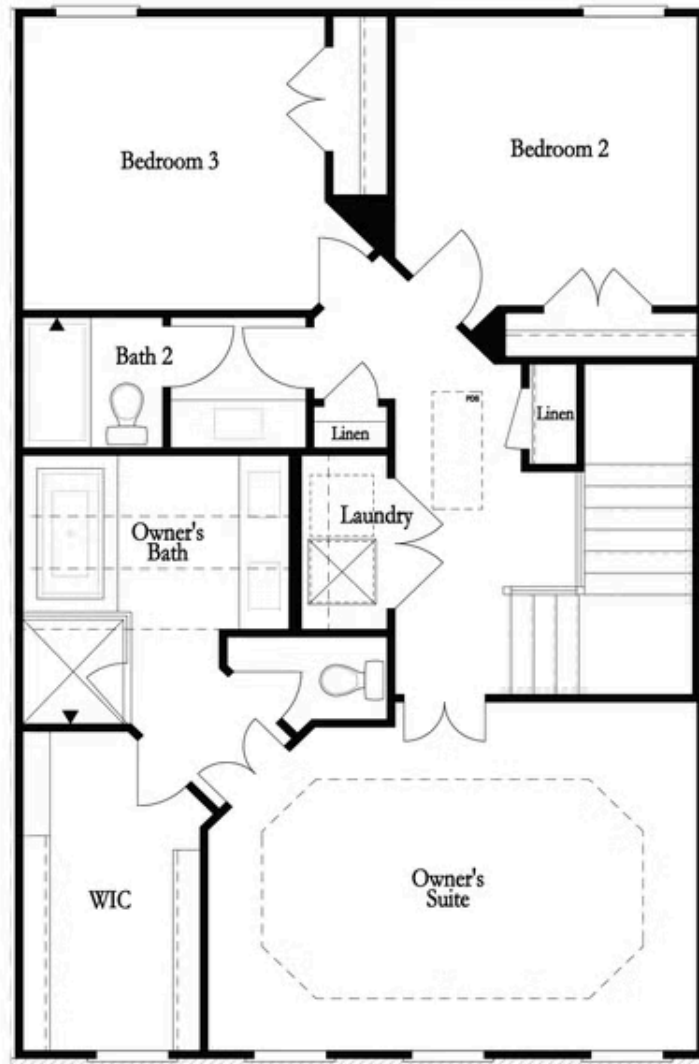
Want to Know More  
About This Home?

CONTACT OUR COMMUNITY SALES MANAGER  
Call Us @ 470.248.2777



Want to Know More  
About This Home?

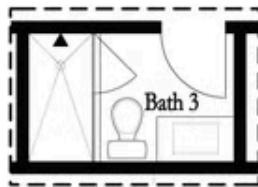
CONTACT OUR COMMUNITY SALES MANAGER  
Call Us @ 470.248.2777



Want to Know More  
About This Home?

CONTACT OUR COMMUNITY SALES MANAGER  
Call Us @ 470.248.2777

### Options



Optional Shower



Optional Fireplace



Optional Fireplace  
Linear

### First Floor Options



Optional Walk Through Shower

### Second Floor Options



Optional Free Standing Tub  
with Shower

### Third Floor Options

Want to Know More  
About This Home?

CONTACT OUR COMMUNITY SALES MANAGER  
Call Us @ 470.248.2777