



PRICED AT
\$919,195



2117 Sq Ft



3 Beds



3.5 Baths



2 Car Garage



3.0 Story

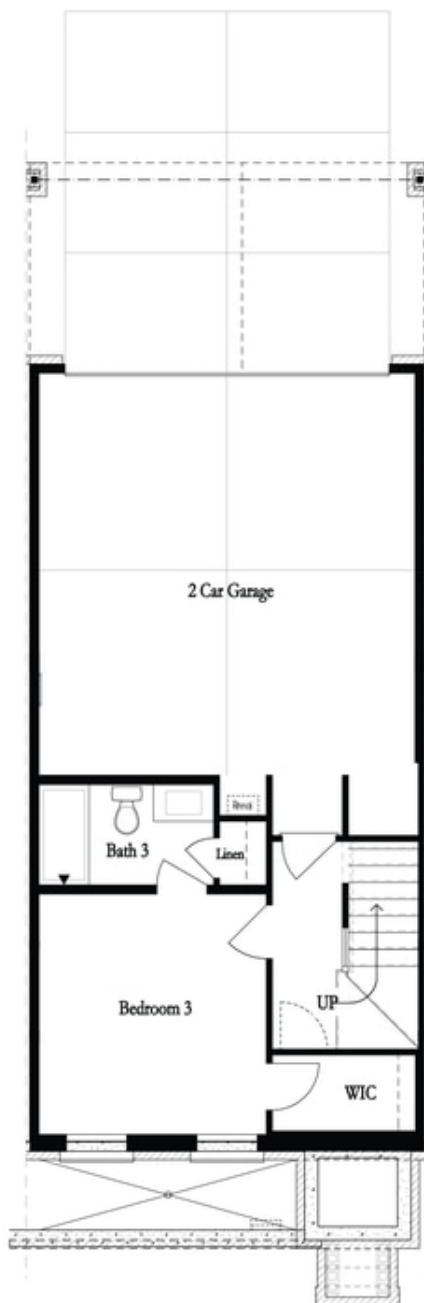
Elevate your life in 2023! The Chamberlain Home Design features 3 Bed / 3.5 Bath ~ FIREPLACE ~ WALK THROUGH SHOWER ~ ACCENT TRIM WALL ON ENTRY FOYER ~ ACCENT TRIM WALL IN OWNERS BEDROOM ~ CUSTOM CLOSETS ~ Towns on Thompson- a boutique community of 48 townhomes combining luxury living with exclusive locality. Ideally situated on Thompson Street separating Downtown Alpharetta from Avalon, the possibilities are endless in the heart of vibrant Alpharetta! New Construction directly on Thompson Street! Guest welcome to park on Thompson Street as they enter you front stoop to arrive immediately at your open concept main level featuring 10 ft ceilings & Hardwoods Throughout ALL of home. Bright and Open Kitchen mindfully situated in the front of home accompanied by a 7 ft bay window. Bright White stacked cabinets to the ceiling paired with modern Driftwood Island with Cambria Quartz Countertop. GE Café Appliances including a gorgeous 36" Commercial Range w/ Gas Oven + Modern Designer Hood Vent + Café Dishwasher + Microwave Drawer Oven. Dining space separates kitchen from your living room featuring a modern FIREPLACE with Shiplap Surround. TV Bracing, Smart Tubes, Media Outlets, and Wireless Access Points have been installed for easy ...

**Want to Know More
About This Home?**

CONTACT OUR NEW HOME NAVIGATOR

NONE

Call Us @ 470-248-2777

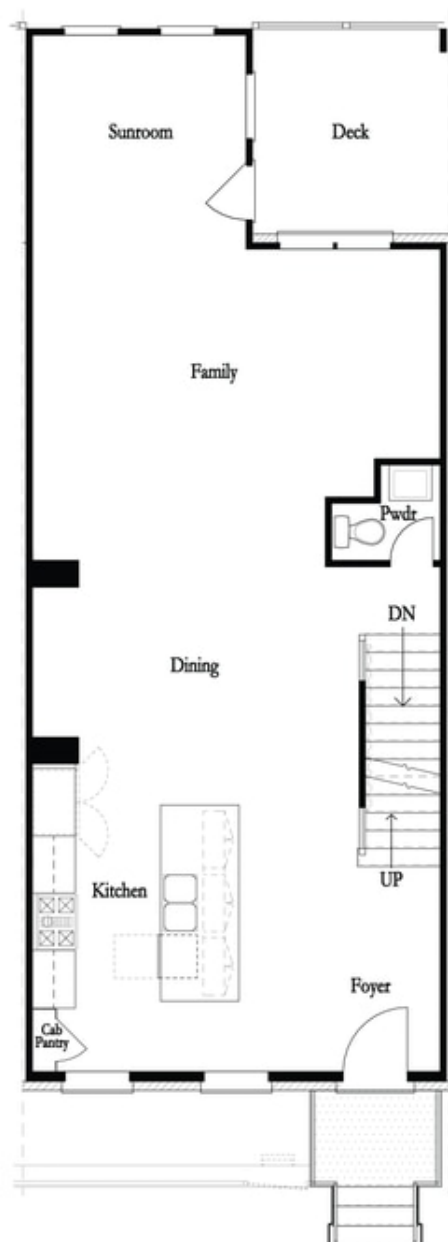


**Want to Know More
About This Home?**

CONTACT OUR NEW HOME NAVIGATOR

NONE

Call Us @ 470-248-2777

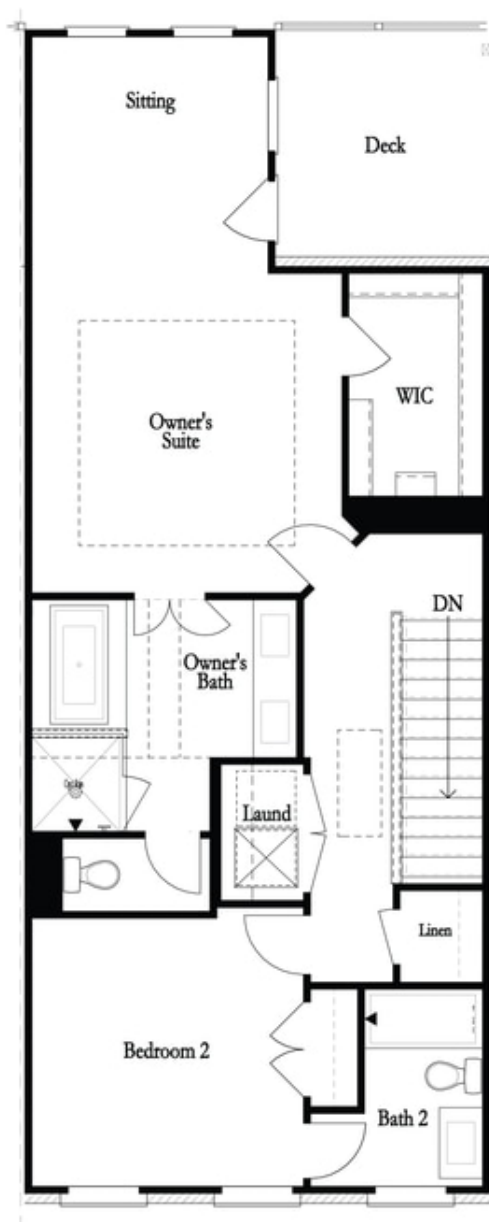


Want to Know More
About This Home?

CONTACT OUR NEW HOME NAVIGATOR

NONE

Call Us @ 470-248-2777



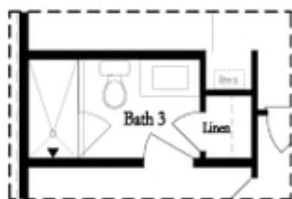
**Want to Know More
About This Home?**

CONTACT OUR NEW HOME NAVIGATOR

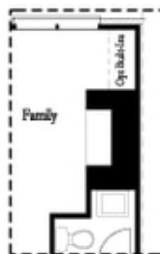
NONE

Call Us @ 470-248-2777

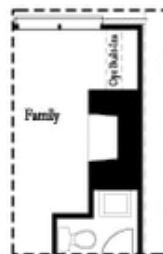
Optional Layouts



Opt. Shower



Opt. Linear Fireplace



Opt. Fireplace

First Floor Options

Second Floor Options



Opt. Walk-Through Shower



Opt. Freestanding Tub/Shower Combo

Third Floor Options

Want to Know More
About This Home?

CONTACT OUR NEW HOME NAVIGATOR

NONE

Call Us @ 470-248-2777