



PRICED AT
\$1,007,740

 2325 Sq Ft

 4 Beds

 3.5 Baths

 2 Car Garage

 3.0 Story

Elevate your life in 2023! New Year New Price plus \$20k anyway you want on all contracts written before 1/31/2023 and close 3/31/2023. See agents for details. The Chaucer Home Design features 4 Bed / 3.5 Bath ~ FIREPLACE ~ FREE STANDING TUB ~ DESIGNER TRIM ACCENT WALLS ~ FENCED IN BACKYARD ~ DESIGNER CURATED FINISHES ~ Towns on Thompson- a boutique community of 48 townhomes combining luxury living with exclusive locality. Ideally situated on Thompson Street separating Downtown Alpharetta from Avalon, the possibilities are endless in the heart of vibrant Alpharetta! This beautiful home design sits over 25 ft wide with 3 stunning 8 ft arched windows on your main level, truly making this space feel abundantly bright, spacious, and open! Enjoy Hardwoods Throughout the home, 10 ft ceilings + oversized, split staircases featuring open railing providing views to your front door Foyer (perfect for statement foyer chandelier) & Custom Trim Wall installed vertically from the Foyer to the 3rd floor. Kitchen is mindfully situated in the rear of home overlooking HOA Maintained backyard & pocket park. Home Site 18 features stacked white cabinets to the ceiling, driftwood island with Cambria Quartz Countertops, Farmhouse Sink, and Custom Pantry Shelving. ...

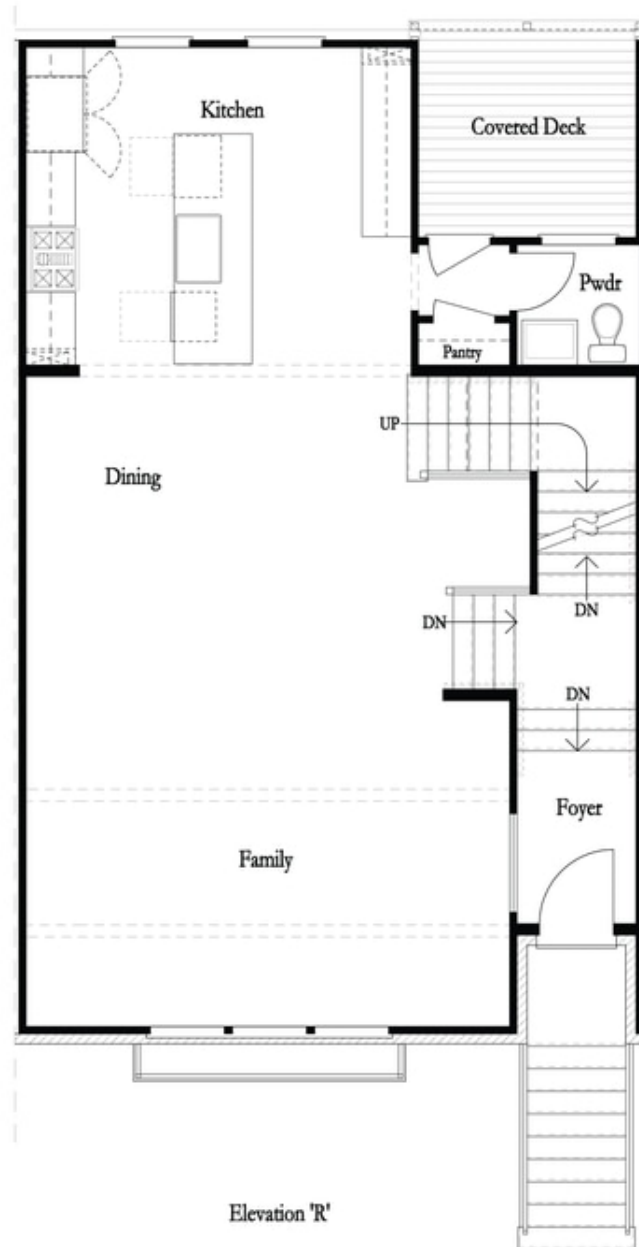
**Want to Know More
About This Home?**

CONTACT OUR COMMUNITY SALES MANAGER
Call Us @ 470.248.2777



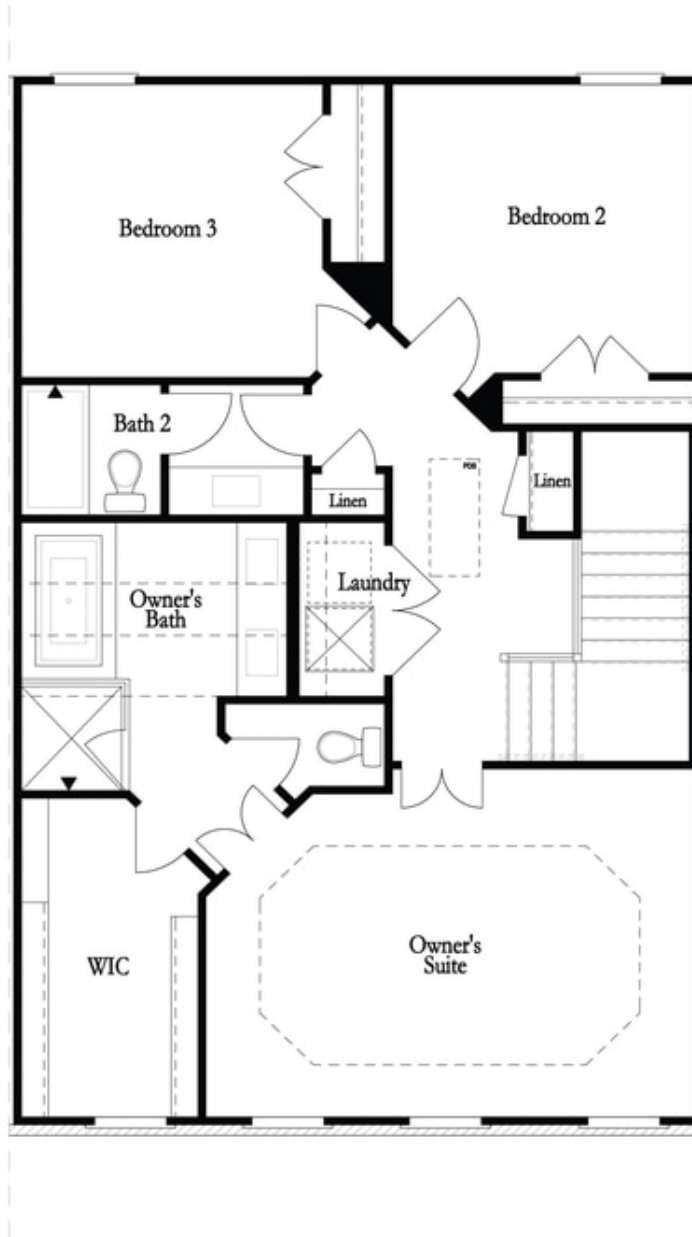
**Want to Know More
About This Home?**

CONTACT OUR COMMUNITY SALES MANAGER
Call Us @ 470.248.2777



**Want to Know More
About This Home?**

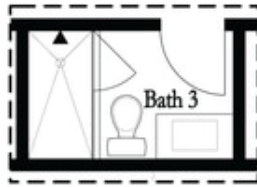
CONTACT OUR COMMUNITY SALES MANAGER
Call Us @ 470.248.2777



**Want to Know More
About This Home?**

CONTACT OUR COMMUNITY SALES MANAGER
Call Us @ 470.248.2777

Options

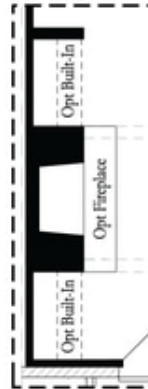


Optional Shower

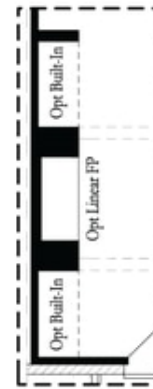
First Floor Options



Optional Walk Through Shower



Optional Fireplace



Optional Fireplace
 Linear

Second Floor Options



Optional Free Standing Tub
 with Shower

Third Floor Options

**Want to Know More
 About This Home?**

CONTACT OUR COMMUNITY SALES MANAGER
 Call Us @ 470.248.2777