








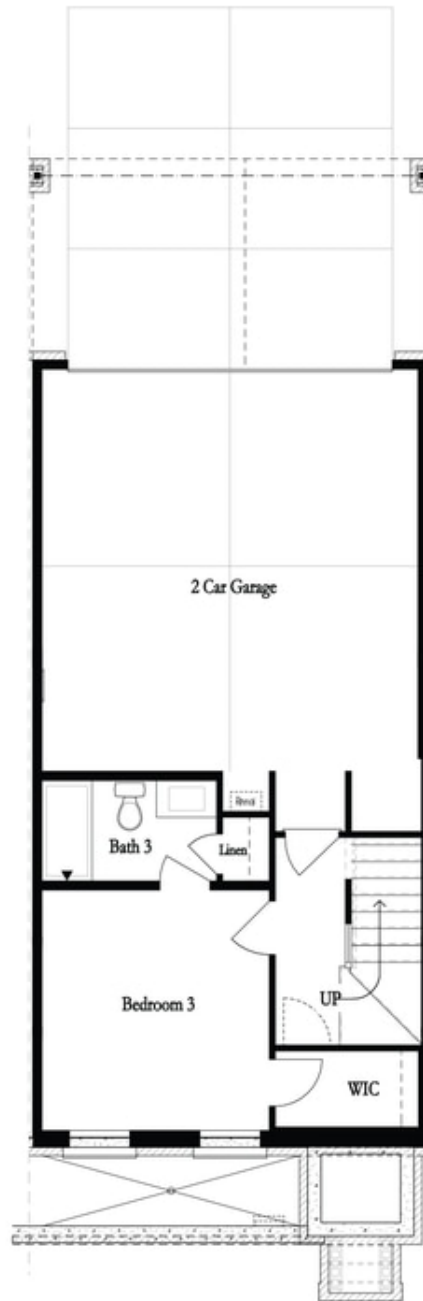
PRICED AT  
**\$891,710**

-  2117 Sq Ft
-  3 Beds
-  3.5 Baths
-  2 Car Garage
-  3.0 Story

Elevate your life in 2023! New Year New Price plus \$20k anyway you want on all contracts written before 1/31/2023 and close 3/31/2023. See agents for details. The Chamberlain Home Design features 3 Bed / 3.5 Bath ~ LINEAR FIREPLACE ~ FREE STANDING TUB ~ DESIGNER CURATED FINISHES ~ Towns on Thompson- a boutique community of 48 townhomes combining luxury living with exclusive locality. Ideally situated on Thompson Street separating Downtown Alpharetta from Avalon, the possibilities are endless in the heart of vibrant Alpharetta! New Construction directly on Thompson Street! Nottingham Tudor brick parallels the Thompson Street Charm as your front stoop connects you to the sidewalk leading you to Thompson Street Park! Guest welcome to park on Thompson Street as they enter you front stoop to arrive immediately at your open concept main level featuring 10 ft ceilings & Hardwoods Throughout ALL of home. Bright and Open Kitchen mindfully situated in the front of home accompanied by a 7 ft bay window. Bright White stacked cabinets to the ceiling paired with Satin Nickel cabinet hardware offers a timeless appeal with a modern Willow Gray Island with Cambria Quartz Countertop, textured white herringbone backsplash, and Farmhouse Sink. GE Café Appliances ...

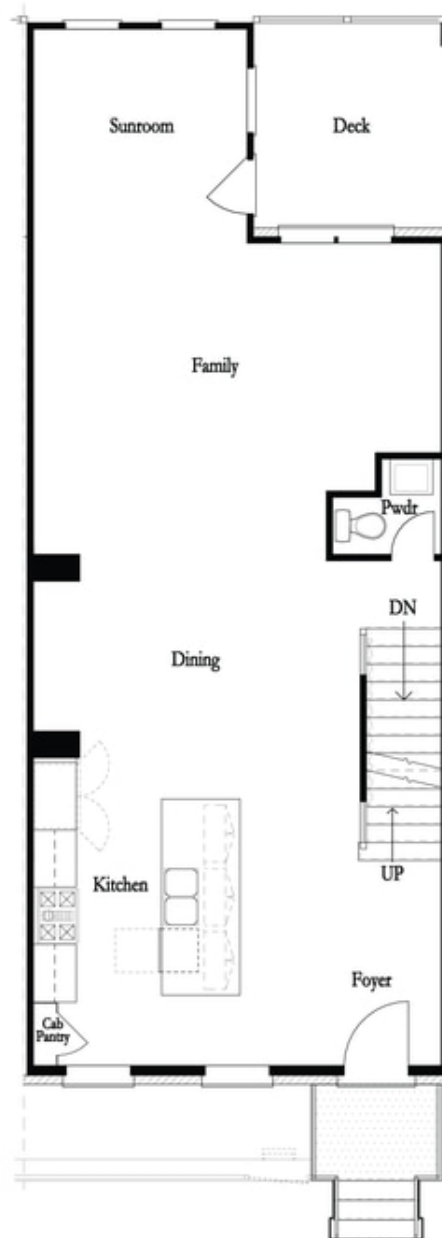
**Want to Know More  
About This Home?**

CONTACT OUR COMMUNITY SALES MANAGER  
Call Us @ 470.248.2777



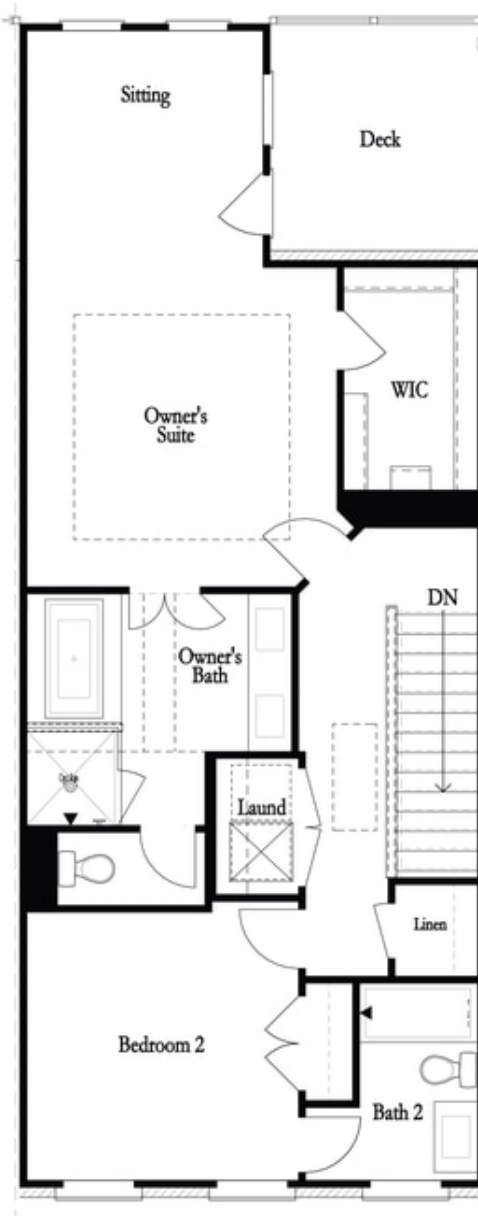
**Want to Know More  
About This Home?**

CONTACT OUR COMMUNITY SALES MANAGER  
Call Us @ 470.248.2777



**Want to Know More  
About This Home?**

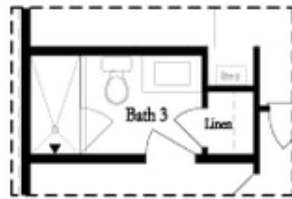
CONTACT OUR COMMUNITY SALES MANAGER  
Call Us @ 470.248.2777



**Want to Know More  
About This Home?**

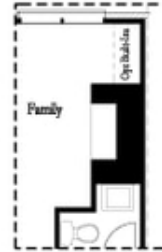
CONTACT OUR COMMUNITY SALES MANAGER  
Call Us @ 470.248.2777

Optional Layouts

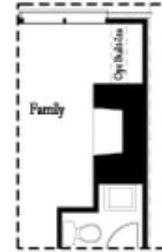


*Opt. Shower*

First Floor Options



*Opt. Linear Fireplace*

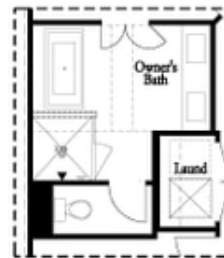


*Opt. Fireplace*

Second Floor Options



*Opt. Walk-Through Shower*



*Opt. Freestanding Tub/Shower Combo*

Third Floor Options

**Want to Know More  
 About This Home?**

CONTACT OUR COMMUNITY SALES MANAGER  
 Call Us @ 470.248.2777