



PRICED AT
\$1,063,485

 2347 Sq Ft

 4 Beds

 3.5 Baths

 2 Car Garage

 3.0 Story

The Chaucer S Home Design features 4 Bed / 3.5 Bath ~ DESIGNER CURATED FINISHES ~ Towns on Thompson- a boutique community of 48 townhomes combining luxury living with exclusive locality. Ideally situated on Thompson Street separating Downtown Alpharetta from Avalon, the possibilities are endless in the heart of vibrant Alpharetta! Home Site 17 – End unit featuring upgraded walk in shower in Terrace Level Bathroom, Fireplace on Main Level Living & Owner's Bathroom with Walk Through Shower. This beautiful home design sits over 25 ft wide with large bay windows in front of living room truly making this space feel abundantly bright, spacious, and open! Enjoy Hardwoods Throughout the home, 10 ft ceilings + oversized, and split staircases featuring open railing providing views to your front door Foyer- perfect for statement foyer chandelier! Kitchen is mindfully situated in the rear of home overlooking HOA Maintained backyard & pocket park. Home Site 17 features stacked white cabinets to the ceiling, Cambria Quartz Countertops, Farmhouse Sink, and Custom Pantry Shelving. Dinner Party prep made easy with GE Café Appliances including a gorgeous 36" Commercial Range w/ Gas Oven + Modern Designer Hood Vent + Café Dishwasher + plus an additional Café ...

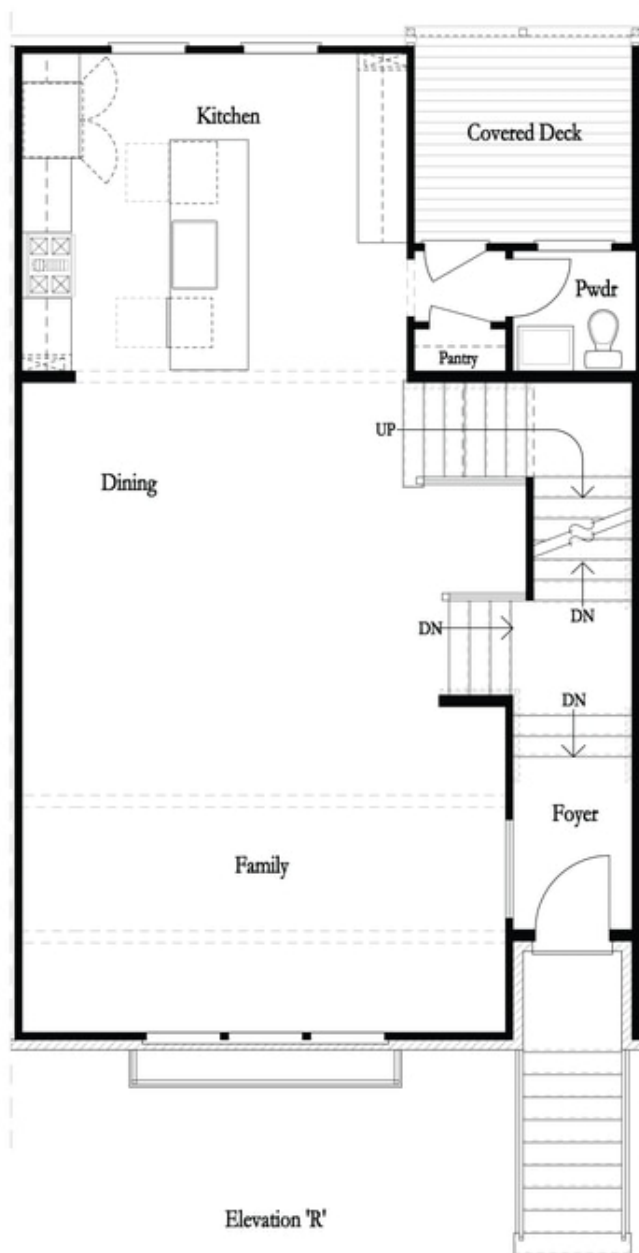
**Want to Know More
About This Home?**

CONTACT OUR COMMUNITY SALES MANAGER
Call Us @ 470-248-2777



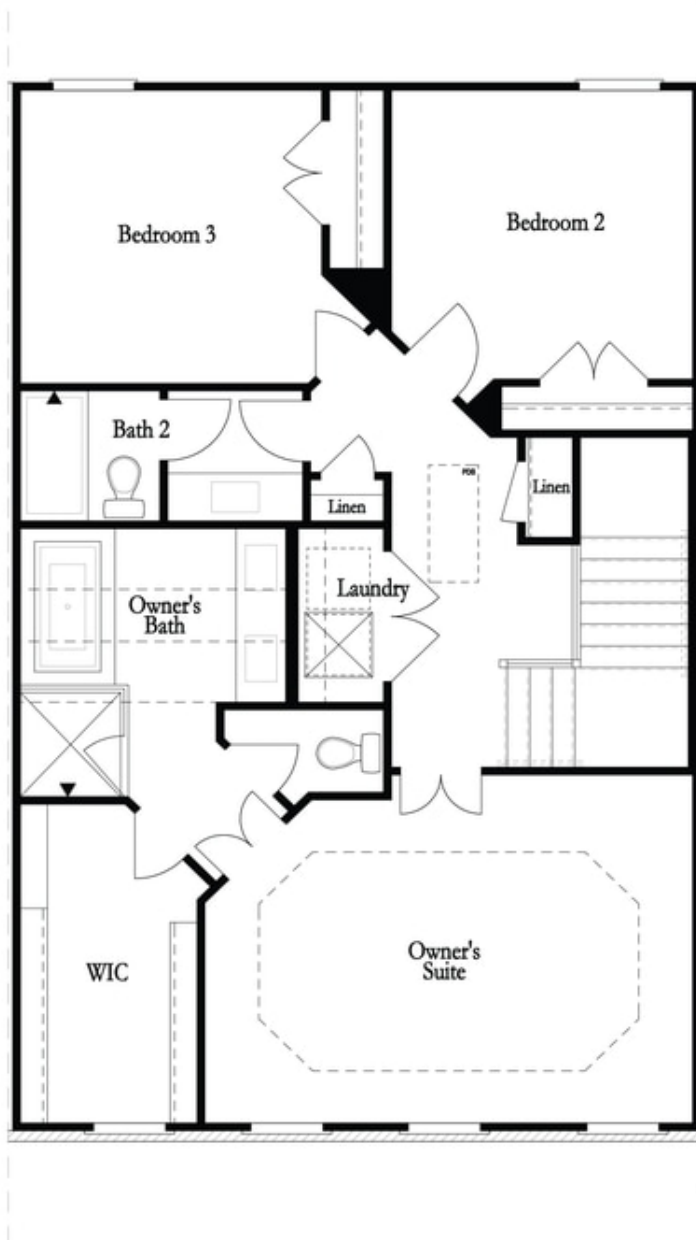
**Want to Know More
About This Home?**

CONTACT OUR COMMUNITY SALES MANAGER
Call Us @ 470-248-2777



**Want to Know More
About This Home?**

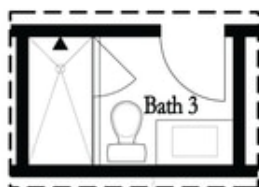
CONTACT OUR COMMUNITY SALES MANAGER
Call Us @ 470-248-2777



**Want to Know More
About This Home?**

CONTACT OUR COMMUNITY SALES MANAGER
Call Us @ 470-248-2777

Options



Optional Shower

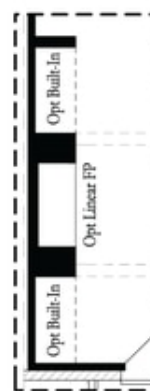
First Floor Options



Optional Walk Through Shower



Optional Fireplace



Optional Fireplace
Linear

Second Floor Options



Optional Free Standing Tub
with Shower

Third Floor Options

Want to Know More
About This Home?

CONTACT OUR COMMUNITY SALES MANAGER
Call Us @ 470-248-2777