



PRICED AT  
**\$926,310**

 2105 Sq Ft

 3 Beds

 3.5 Baths

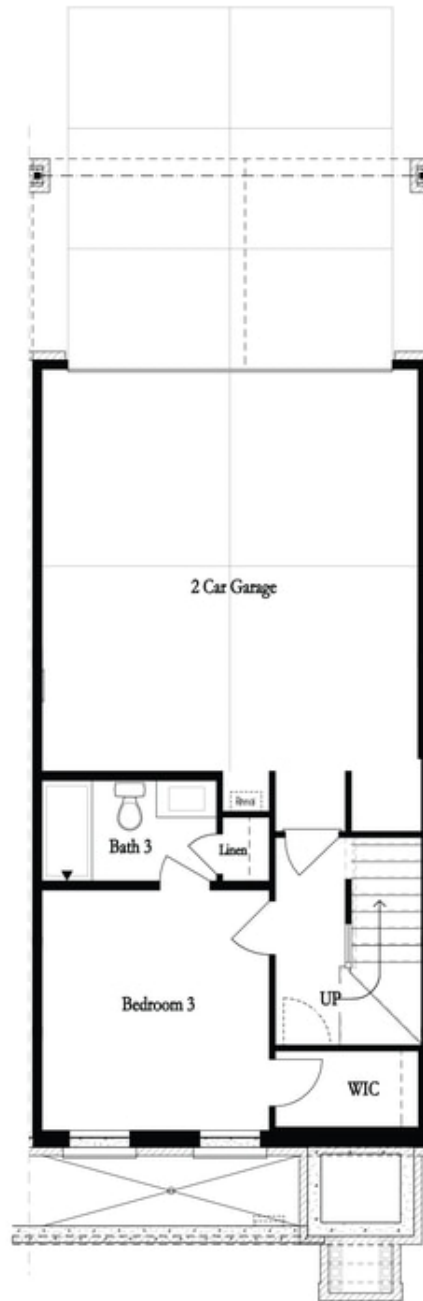
 2 Car Garage

 3.0 Story

Spring Into Savings with \$10K towards closing costs. Offer only available on contracts written by April 30, 2023 when financing with one of Seller's 4 preferred lenders. Elevate your life in 2023! The Chamberlain Home Design features 3 Bed / 3.5 Bath ~ LINEAR FIREPLACE ~ WALK THROUGH SHOWER ~ DESIGNER CURATED FINISHES ~ Towns on Thompson- a boutique community of 48 townhomes combining luxury living with exclusive locality. Ideally situated on Thompson Street separating Downtown Alpharetta from Avalon, the possibilities are endless in the heart of vibrant Alpharetta! New Construction directly on Thompson Street! Guest welcome to park on Thompson Street as they enter your front stoop to arrive immediately at your open concept main level featuring 10 ft ceilings & Hardwoods Throughout ALL of home. Bright and Open Kitchen mindfully situated in the front of home w/ Bright White stacked cabinets to the ceiling paired with modern Slate Island with Cambria Quartz Countertop. GE Café Appliances including a gorgeous 36" Commercial Range w/ Gas Oven + Modern Designer Hood Vent + Café Dishwasher + Microwave Drawer Oven. Dining space separates kitchen from your living room featuring a modern linear FIREPLACE with Shiplap Surround. TV Bracing, Smart Tubes, Media Outlets, ...

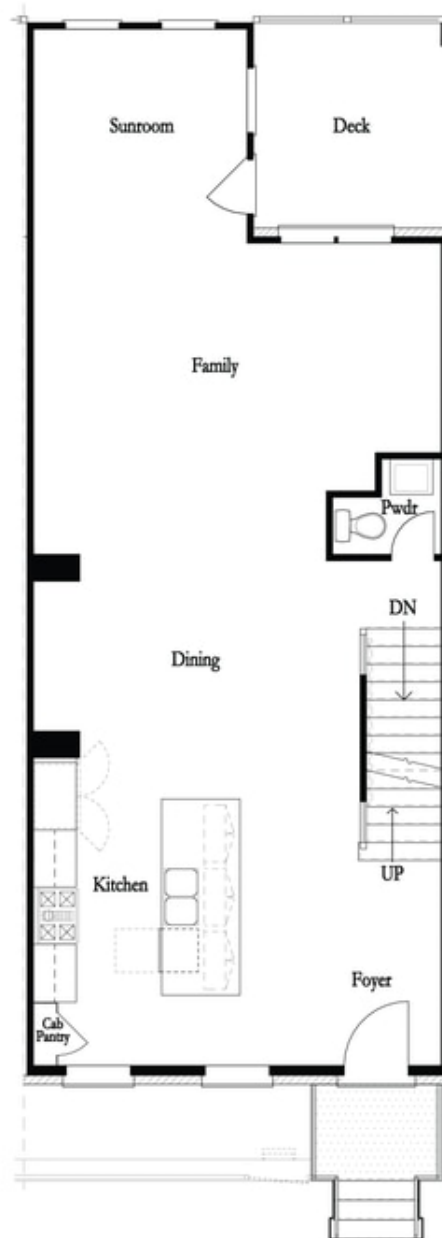
**Want to Know More  
About This Home?**

CONTACT OUR COMMUNITY SALES MANAGER  
Call Us @ 470.248.2777



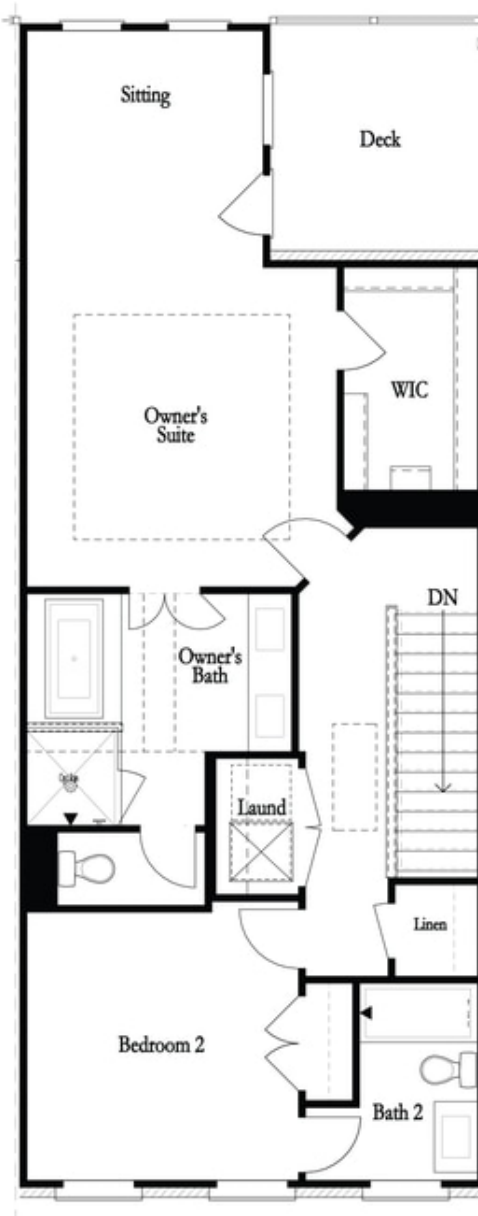
**Want to Know More  
About This Home?**

CONTACT OUR COMMUNITY SALES MANAGER  
Call Us @ 470.248.2777



**Want to Know More  
About This Home?**

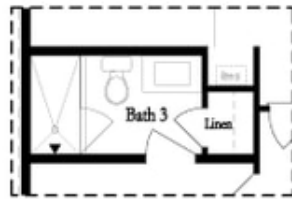
CONTACT OUR COMMUNITY SALES MANAGER  
Call Us @ 470.248.2777



**Want to Know More  
About This Home?**

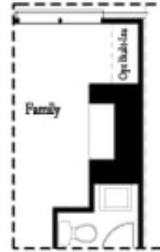
CONTACT OUR COMMUNITY SALES MANAGER  
Call Us @ 470.248.2777

Optional Layouts

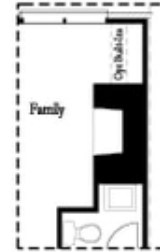


*Opt. Shower*

First Floor Options



*Opt. Linear Fireplace*

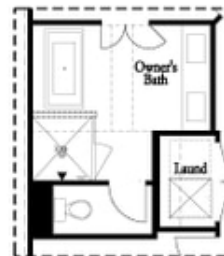


*Opt. Fireplace*

Second Floor Options



*Opt. Walk-Through Shower*



*Opt. Freestanding Tub/Shower Combo*

Third Floor Options

**Want to Know More  
 About This Home?**

CONTACT OUR COMMUNITY SALES MANAGER  
 Call Us @ 470.248.2777