



PRICED AT
\$1,107,355

 **2325 Sq Ft**

 **4 Beds**

 **3.5 Baths**

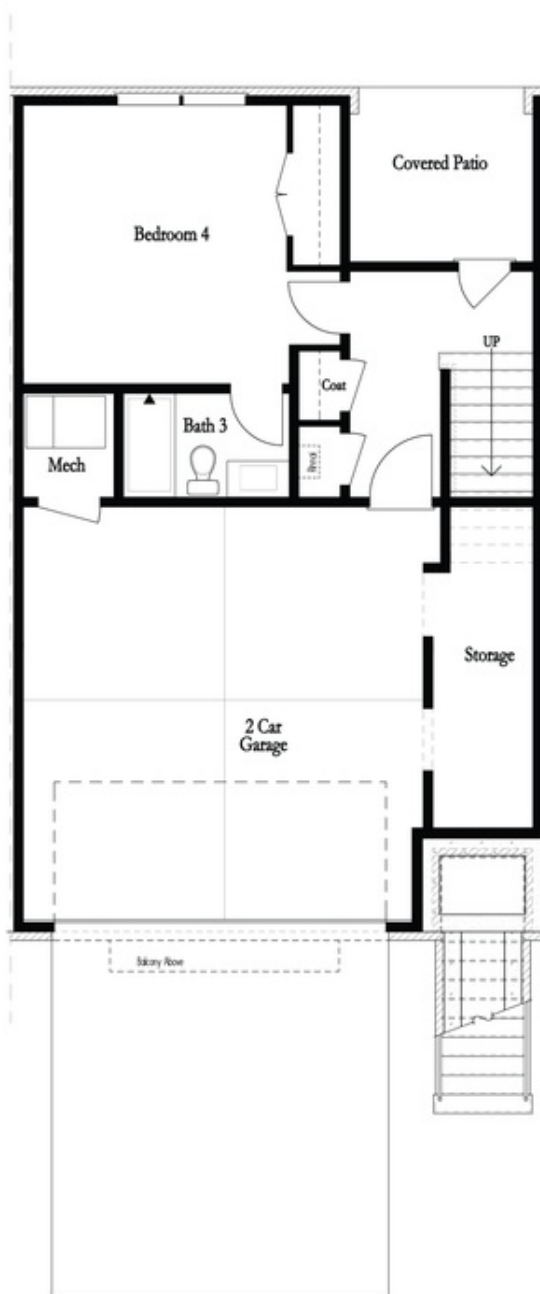
 **2 Car Garage**

 **3.0 Story**

Home Site 16 is a MUST SEE LOT!!! Move in ready & turn key home w/ all appliances included! End unit featuring extra widows, large fenced in backyard, & Clean, unobstructed views from the front of the home!! Located across from the community pocket park featuring Rose Trellises- there's no view quiet like it! The Chaucer Home Design features 4 Bed / 3.5 Bath ~ LINEAR FIREPLACE W/ CUSTOM BUILT IN'S ~ FREE STANDING TUB ~ DESIGNER TRIM ACCENT WALLS ~ FENCED IN BACKYARD ~ DESIGNER CURATED FINISHES ~ Home Site 16 features Towns on Thompson's largest floor plan sitting over 25 feet wide. This extra width is ideal for the extra storage located in the garage for bikes, golf clubs, coolers and everything you need to walk to Downtown Alpharetta's green space this spring! This home features a 2 car garage + driveway large enough for 2 additional cars to fit. Entering from the garage, you have an oversized bedroom (or office) with closet & full bathroom with an upgraded walk in shower. The terrace level also has a covered patio leading to the fenced in backyard. Large, wide split stair cases lead you to the main level living ...

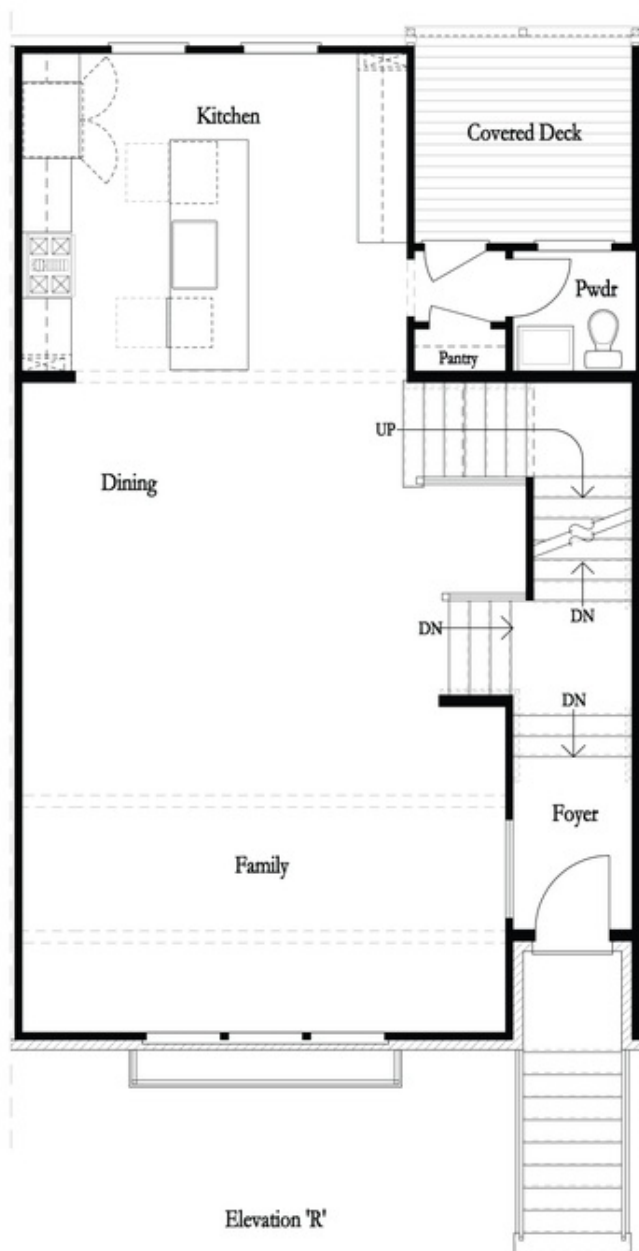
**Want to Know More
About This Home?**

CONTACT OUR COMMUNITY SALES MANAGER
Call Us @ 470.248.2777



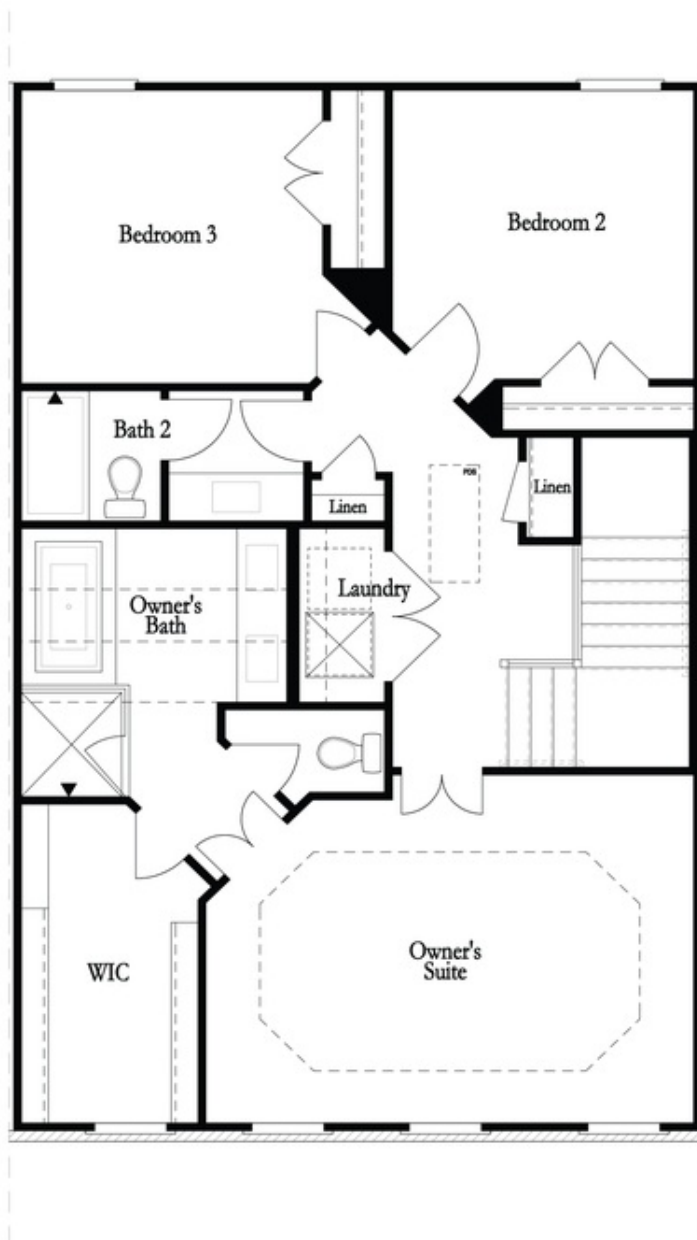
**Want to Know More
About This Home?**

CONTACT OUR COMMUNITY SALES MANAGER
Call Us @ 470.248.2777



**Want to Know More
About This Home?**

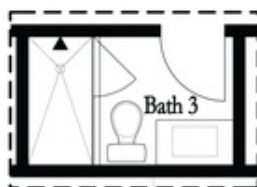
CONTACT OUR COMMUNITY SALES MANAGER
Call Us @ 470.248.2777



**Want to Know More
About This Home?**

CONTACT OUR COMMUNITY SALES MANAGER
Call Us @ 470.248.2777

Options



Optional Shower

First Floor Options



Optional Walk Through Shower



Optional Fireplace



Optional Fireplace
Linear

Second Floor Options



Optional Free Standing Tub
with Shower

Third Floor Options

Want to Know More
About This Home?

CONTACT OUR COMMUNITY SALES MANAGER
Call Us @ 470.248.2777