



PRICED AT
\$1,028,710

 **2347 Sq Ft**

 **4 Beds**

 **3.5 Baths**

 **2 Car Garage**

 **3.0 Story**

The Chaucer S Home Design features 4 Bed / 3.5 Bath ~ Fireplace ~ Walk Through Shower ~ Custom Trim Walls in both Entry Foyer & Owners Suite! Gorgeous home site is ideally situated across from the community pocket park with 4, 10 foot Rose Trellises creating beautiful, serene unobstructed views. Home Site 15 showcases our largest floor plan sitting over 25 feet wide providing a spacious layout ideal for entertaining guest! Guest enter from the front stoop into a 2 story foyer showcasing custom wall trim and a dramatic chandelier light. Split stairs lead you to the main level living room ideally placed in the front of the home overlooking the pocket park! Cozy up by the fireplace wrapped in thin white brick surround with built in's already placed for easy storage. Open concept flow brings you to large living room with ideal walls for accent detail and or buffet / dry bar area. Large Kitchen features Bright White kitchen surround with an Ebony Island + Cambria Inverness Platinum Polished countertops! This show stopping kitchen features a gorgeous 36" Commercial Range w/ Gas Oven + Modern Designer Hood Vent + Café Dishwasher + plus an additional Café Double Wall ...

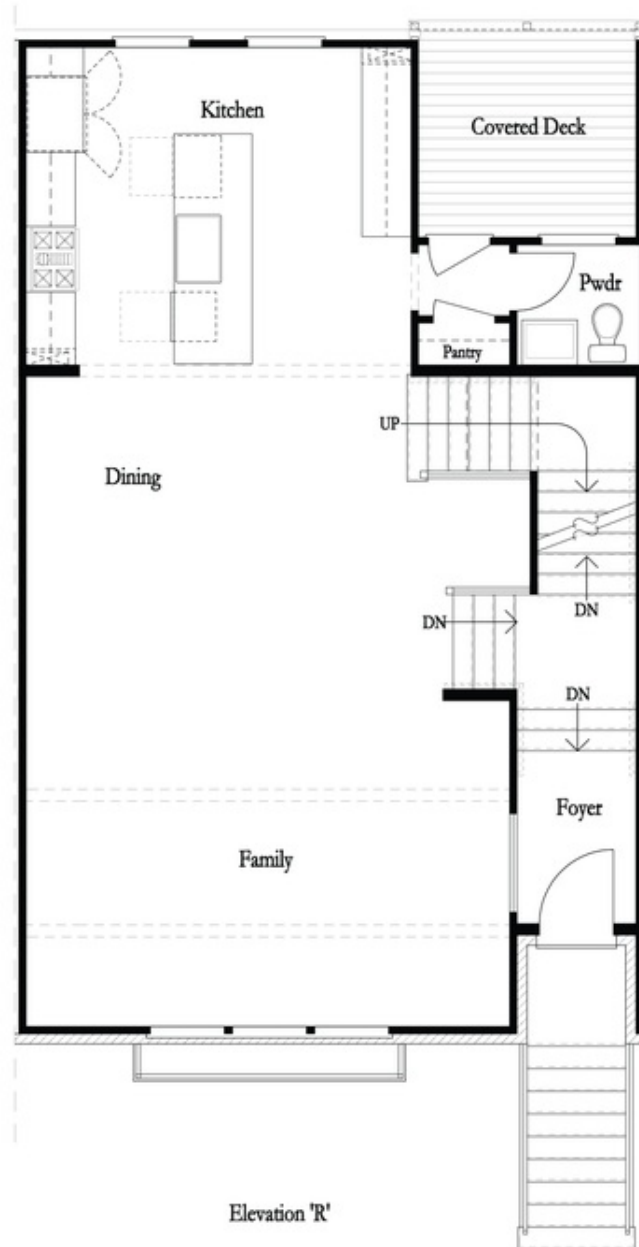
**Want to Know More
About This Home?**

CONTACT OUR COMMUNITY SALES MANAGER
Call Us @ 470.248.2777



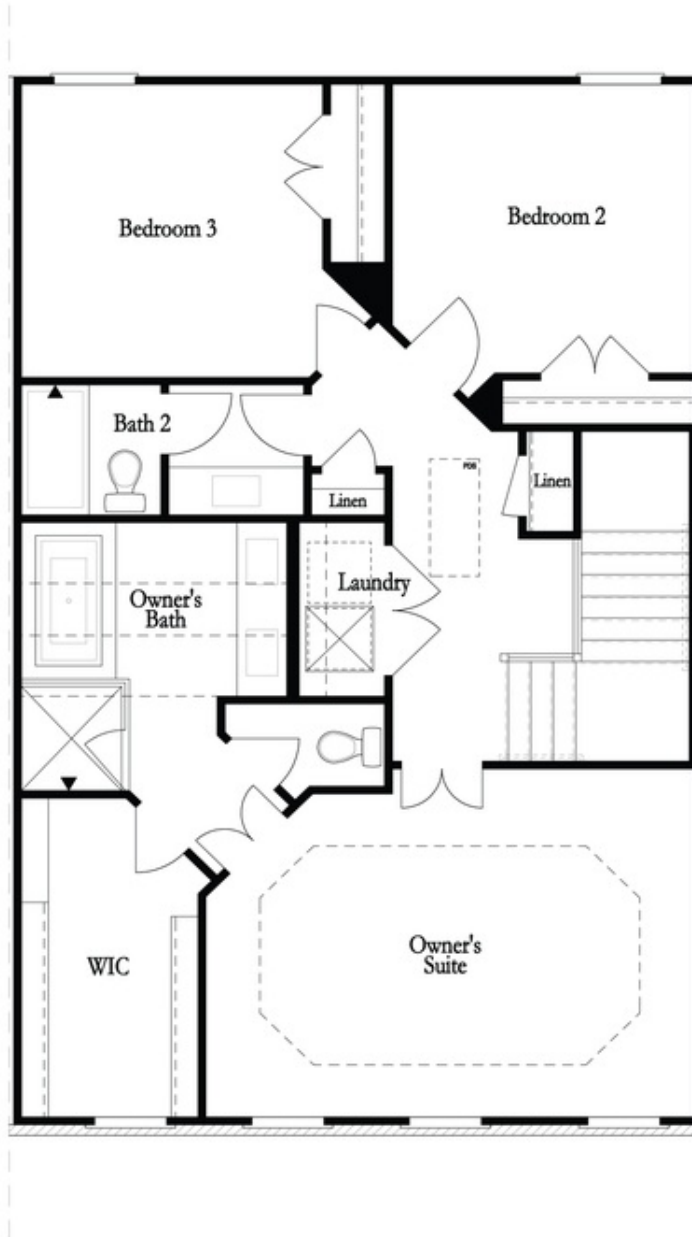
Want to Know More
About This Home?

CONTACT OUR COMMUNITY SALES MANAGER
Call Us @ 470.248.2777



Want to Know More
About This Home?

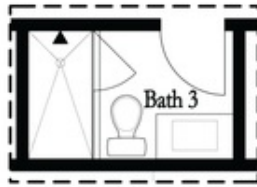
CONTACT OUR COMMUNITY SALES MANAGER
Call Us @ 470.248.2777



Want to Know More
About This Home?

CONTACT OUR COMMUNITY SALES MANAGER
Call Us @ 470.248.2777

Options

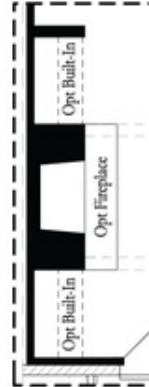


Optional Shower

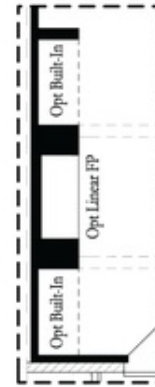
First Floor Options



Optional Walk Through Shower

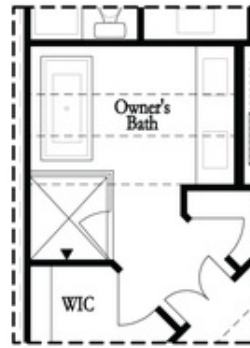


Optional Fireplace



Optional Fireplace
 Linear

Second Floor Options



Optional Free Standing Tub
 with Shower

Third Floor Options

Want to Know More
 About This Home?

CONTACT OUR COMMUNITY SALES MANAGER
 Call Us @ 470.248.2777