



PRICED AT
\$948,185

 2105 Sq Ft

 3 Beds

 3.5 Baths

 2 Car Garage

 3.0 Story

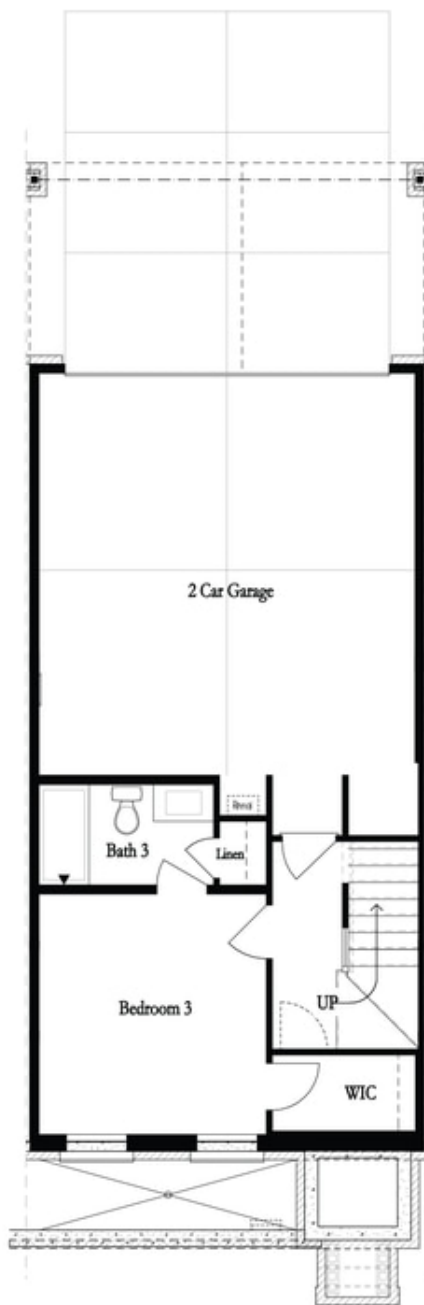
Elevate your life in 2023! Ask about \$20,000 in closing costs with our Preferred Lender for homes closed by March 31, 2023. The Chamberlain Home Design features 3 Bed / 3.5 Bath ~ END UNIT ~ FREE STANDING TUB ~ FIREPLACE ~ DESIGNER CURATED FINISHES ~ Towns on Thompson- a boutique community of 48 townhomes combining luxury living with exclusive locality. Ideally situated on Thompson Street separating Downtown Alpharetta from Avalon, the possibilities are endless in the heart of vibrant Alpharetta! New Construction directly on Thompson Street! Magnolia Ridge brick parallels the Thompson Street Charm as your front stoop connects you to the sidewalk leading you to Thompson Street Park! Guest welcome to park on Thompson Street as they enter your front stoop to arrive immediately at your open concept main level featuring 10 ft ceilings & Hardwoods throughout ALL of home. Bright and Open Kitchen mindfully situated in the front of home is accompanied by 7 ft windows. Bright White stacked cabinets to the ceiling paired with Matte Black cabinet hardware creating depth with a classic White Island with Quartz Countertop, textured white herringbone backsplash, and Single Bowl Sink. GE Café Appliances including a gorgeous 36" Commercial Range w/ ...

**Want to Know More
About This Home?**

CONTACT OUR NEW HOME NAVIGATOR

NONE

Call Us @ 470-248-2777

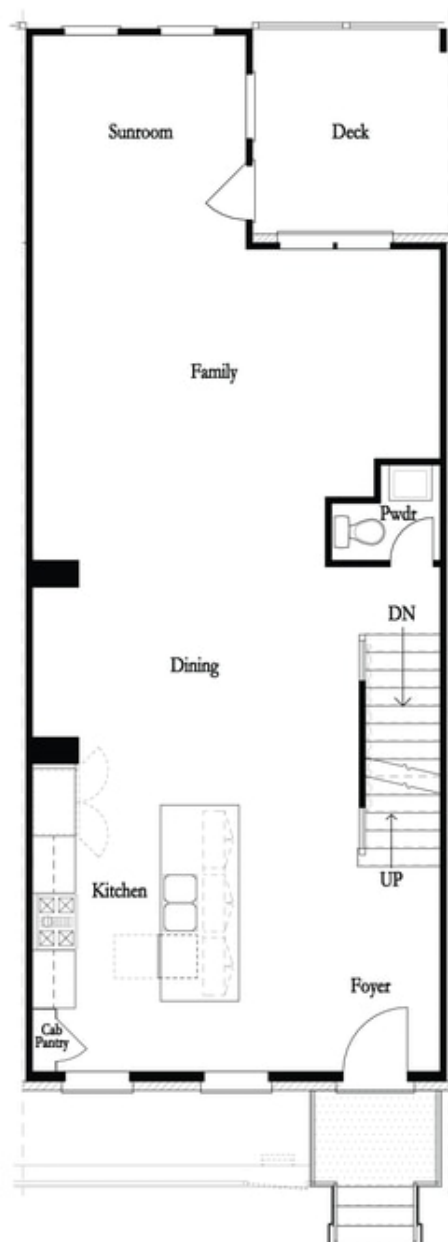


**Want to Know More
About This Home?**

CONTACT OUR NEW HOME NAVIGATOR

NONE

Call Us @ 470-248-2777

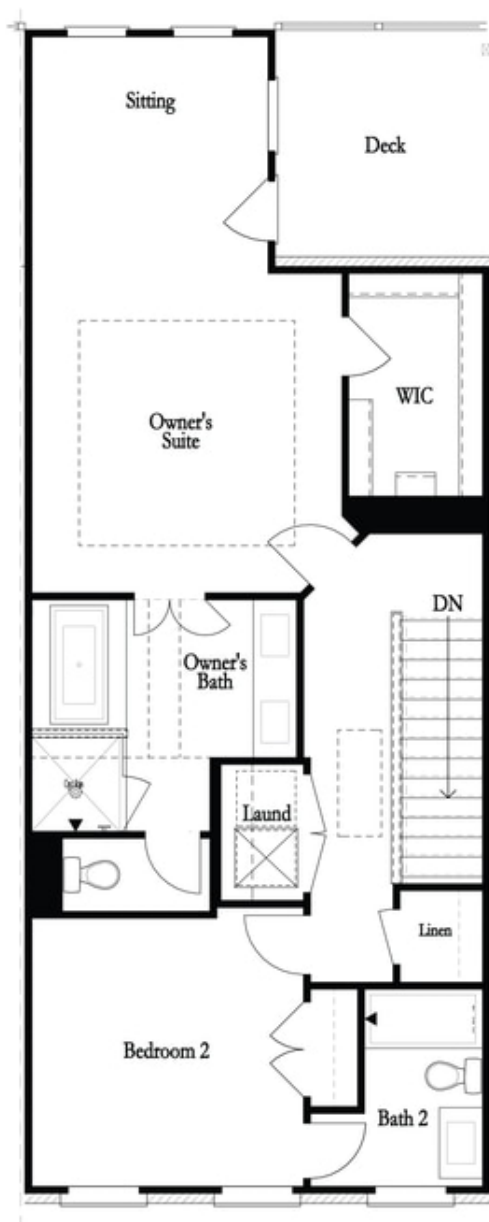


**Want to Know More
About This Home?**

CONTACT OUR NEW HOME NAVIGATOR

NONE

Call Us @ 470-248-2777



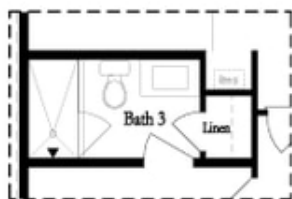
**Want to Know More
About This Home?**

CONTACT OUR NEW HOME NAVIGATOR

NONE

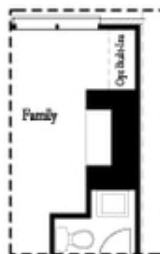
Call Us @ 470-248-2777

Optional Layouts

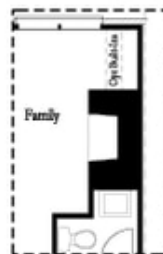


Opt. Shower

First Floor Options

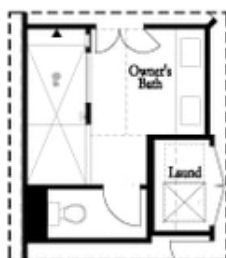


Opt. Linear Fireplace



Opt. Fireplace

Second Floor Options



Opt. Walk-Through Shower



Opt. Freestanding Tub/Shower Combo

Third Floor Options

**Want to Know More
About This Home?**

CONTACT OUR NEW HOME NAVIGATOR

NONE

Call Us @ 470-248-2777