



PRICED AT
\$1,065,070

 2325 Sq Ft

 4 Beds

 3.5 Baths

 2 Car Garage

 3.0 Story

Elevate your life in 2023 with a new home by The Providence Group and \$5,000 towards closing cost! Downtown Alpharetta's newest development, Towns on Thompson- Ideally situated on Thompson Street separating Downtown Alpharetta from Avalon, the possibilities are endless in the heart of vibrant Alpharetta!! The Chaucer S Home Design sits over 25' + feet wide making this townhome live like a wide, single family home. Home Site 13 is an elevated end unit with the BEST views over the community Rose Trellises! Home Site 13 features 4 Bed / 3.5 Bath ~ FIREPLACE ~ WALK THROUGH SHOWER ~ FENCED IN BACKYARD ~ DESIGNER CURATED FINISHES ~ Enjoy Hardwoods Throughout the home, 10 ft ceilings + oversized, split staircases featuring custom Trim Accent wall & open railing providing views to your front door Foyer (perfect for statement foyer chandelier). Kitchen is mindfully situated in the rear of home overlooking HOA Maintained backyard & pocket park. Home Site 13 features stacked white cabinets to the ceiling, modern Midnight island with Cambria Quartz Portrush, Farmhouse Sink, and Custom Pantry Shelving. Dinner Party prep made easy with GE Café Appliances including a gorgeous 36" Commercial Range w/ Gas Oven + Modern Designer Hood ...

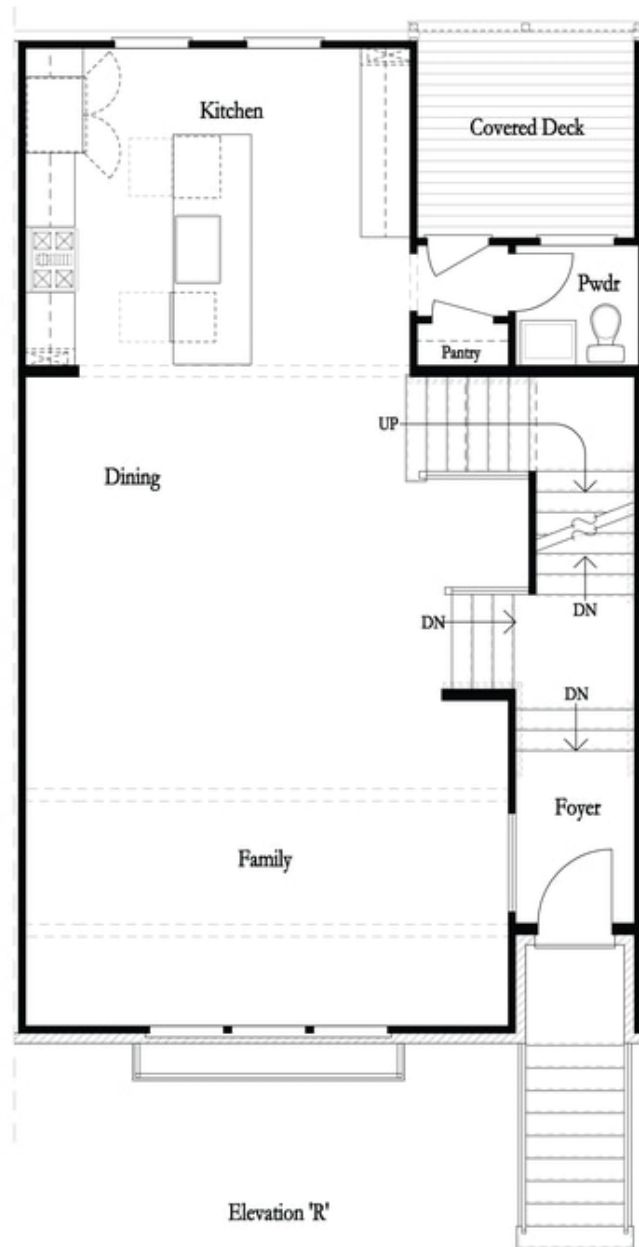
**Want to Know More
About This Home?**

CONTACT OUR NEW HOME NAVIGATOR
Call Us @ 470-248-2777



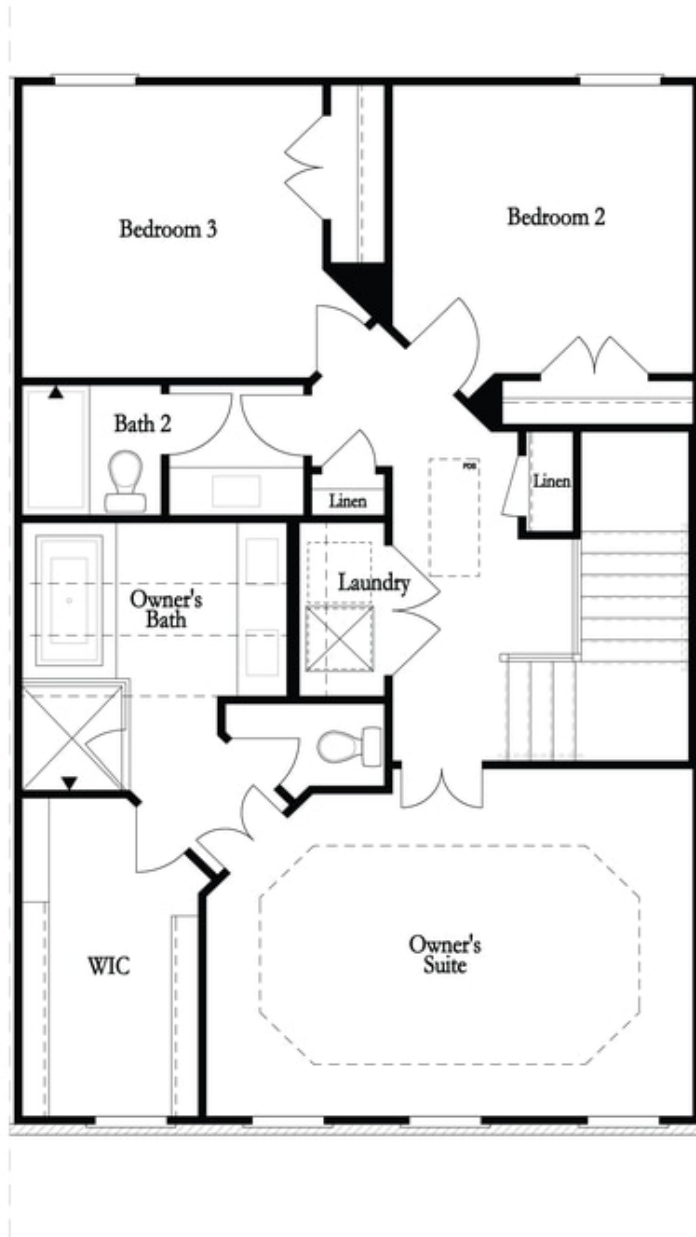
**Want to Know More
About This Home?**

CONTACT OUR NEW HOME NAVIGATOR
Call Us @ 470-248-2777



**Want to Know More
About This Home?**

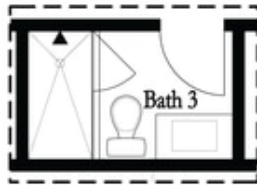
CONTACT OUR NEW HOME NAVIGATOR
Call Us @ 470-248-2777



**Want to Know More
About This Home?**

CONTACT OUR NEW HOME NAVIGATOR
Call Us @ 470-248-2777

Options

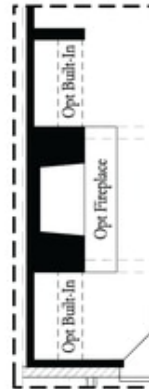


Optional Shower

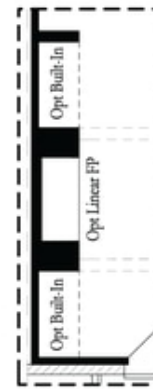
First Floor Options



Optional Walk Through Shower



Optional Fireplace



Optional Fireplace
 Linear

Second Floor Options



Optional Free Standing Tub
 with Shower

Third Floor Options

**Want to Know More
 About This Home?**

CONTACT OUR NEW HOME NAVIGATOR
 Call Us @ 470-248-2777